

Date:

Client:

Project:

VOLA product: 4821



4821

Build-in basin tap with on-off sensor for 'hands free' operation. Sensor aligned with wall.

Valve box VR2617 included.

4821UP = Valve 4800, sensor cable VR509.

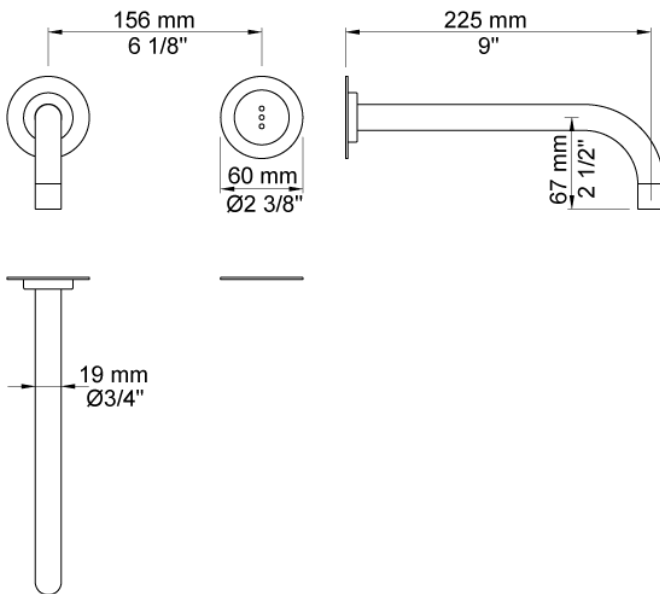
4821AP = 225 mm spout 020, sensor VR510, 60 mm circular flanges 001, VR512.

Flow

	Psi:	14,5	29,0	43,5	58,0	72,5
	(gal/min)	1,3	1,3	1,3	1,3	1,3

Available in colours

- Color 02, Grey
- Color 04, Light blue
- Color 05, Orange
- Color 06, Light green
- Color 08, Yellow
- Color 09, Dark grey
- Color 12, Mocca
- Color 14, Bright red
- Color 15, Dark blue
- Color 16, Polished chrome
- Color 17, Gloss black
- Color 18, White
- Color 19, Natural brass
- Color 20, Brushed chrome
- Color 21, Carmine red
- Color 25, Pink
- Color 27, Matt black
- Color 40, Brushed stainless steel

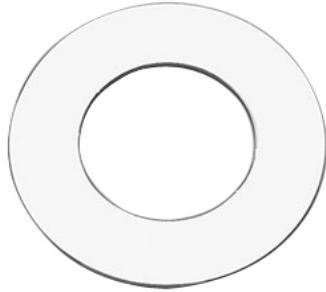


Date:

Client:

Project:

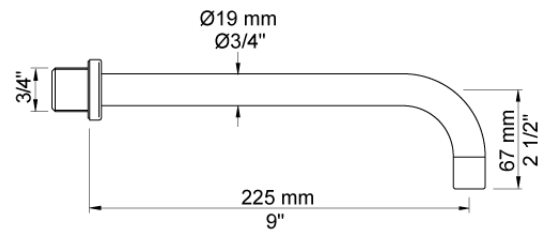
VOLA product: 4821



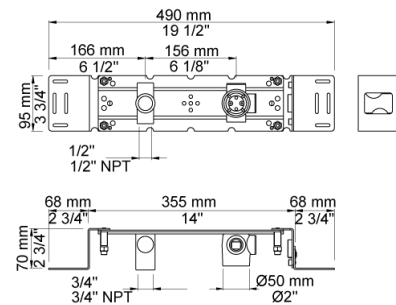
001
60 mm circular flange.
Hole Ø33 mm.



020
225 mm fixed spout with water saving aerator.



4800
Build-in valve with on-off sensor for 'hands free' operation.
Valve box for electronic mixer, VR2617 enclosed.

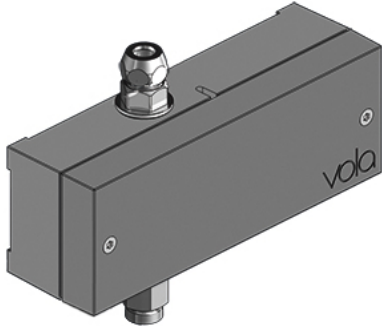


Date:

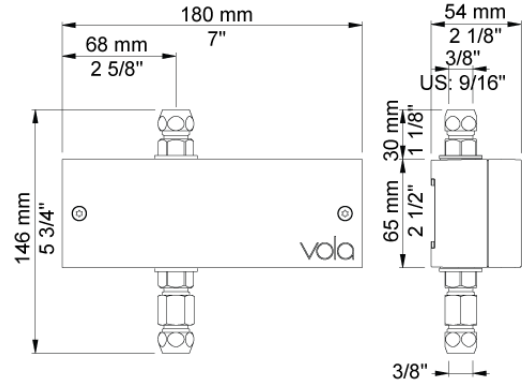
Client:

Project:

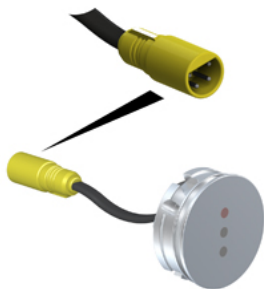
VOLA product: 4821



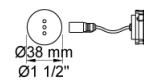
VR2617
Valve box for electronic RB1E/4000/4300/4800



VR509



VR510
Sensor for electronic mixer 4300, 4800 and 4900.

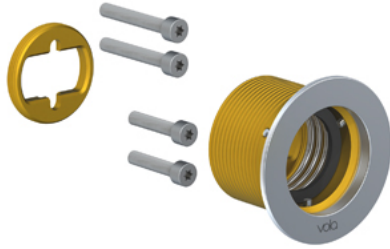


Date:

Client:

Project:

VOLA product: 4821



VR512
[no product text]

