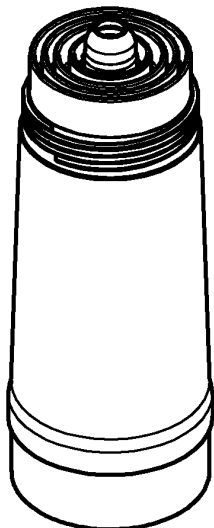
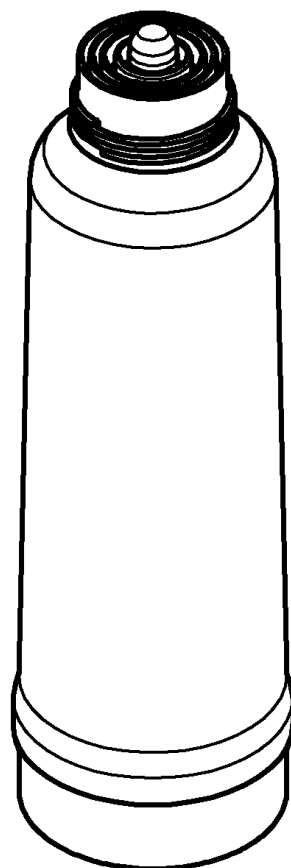




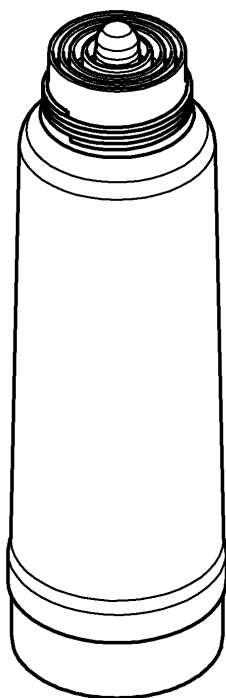
40 404
 40 547
 40 691



40 412



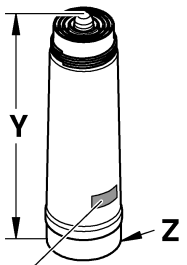
40 430



www.grohe.com/sicherheitsdatenblaetter/

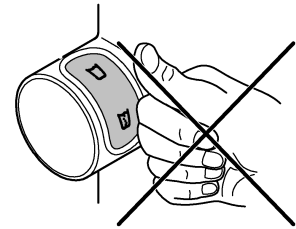
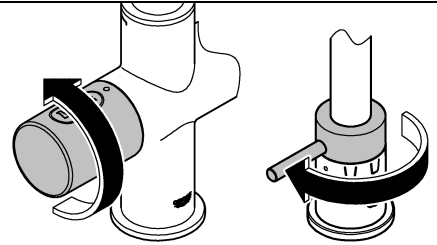
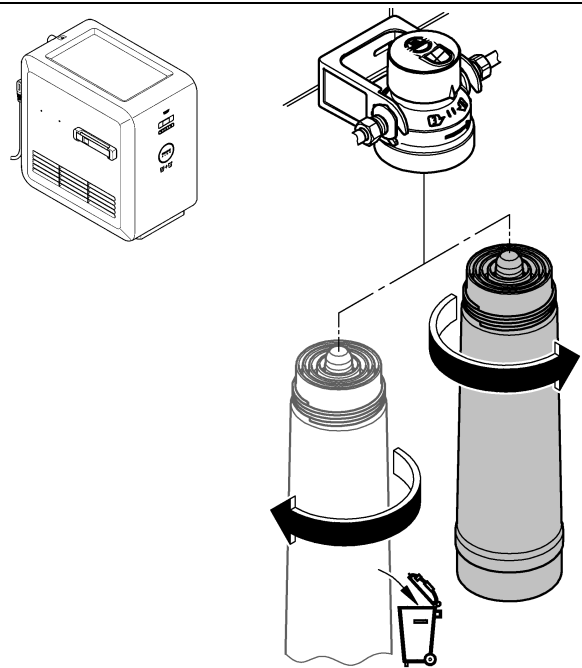
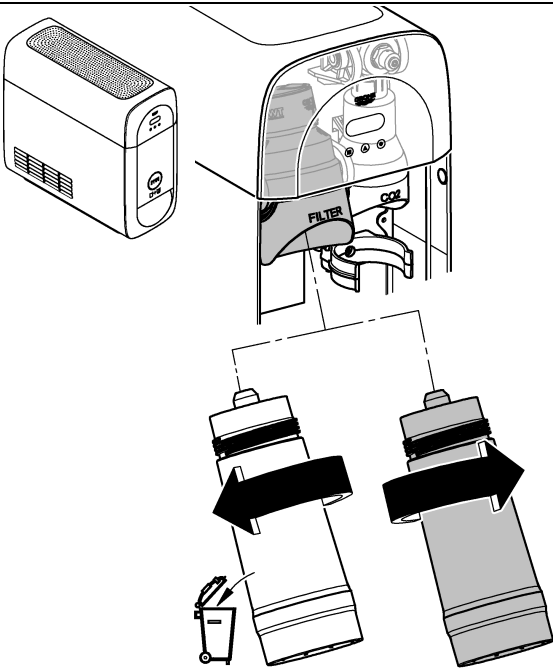
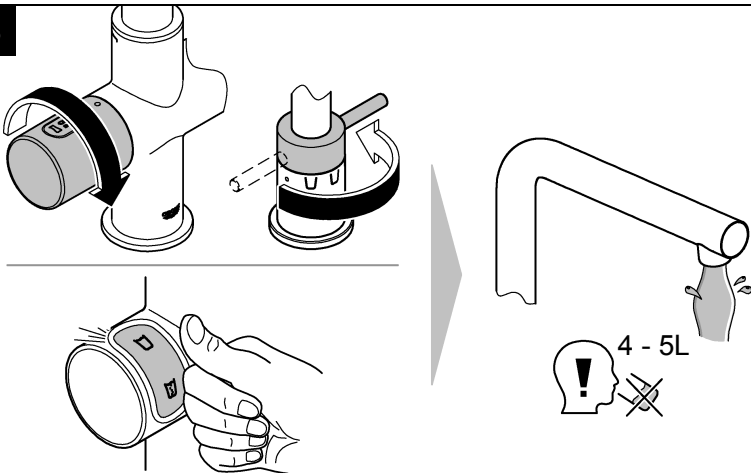
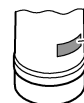
www.grohe.com/safety-data-sheets/

D1	NL7	PL12	P17	BG22	CN27
GB2	S8	UAE13	TR18	EST23	UA28
F3	DK9	GR14	SK19	LV24	RUS29
E4	N10	CZ15	SLO20	LT25	
I5	FIN11	H16	HR21	RO26	

i

X Filter Capacity: ... L

	X	Y	Z
40 404	S	315	Ø88
		12 ³ / ₈ "	Ø3 ⁷ / ₁₆ "
40 430	M	376	Ø110
		14 ¹³ / ₁₆ "	Ø4 ⁵ / ₁₆ "
40 412	L	429	Ø128
		16 ⁷ / ₈ "	Ø5 ¹ / ₁₆ "
40 547	Ac	234	Ø88
		9 ³ / ₁₆ "	Ø3 ⁷ / ₁₆ "
40 691	Mg+	315	Ø88
		12 ³ / ₈ "	Ø3 ⁷ / ₁₆ "

1**2****3****i****!**X
Filter Capacity: ...L
rt.: 40 ... 001

°KH/ °dGH



+



+



Bitte diese Anleitung an den Benutzer der Armatur weitergeben!
Please pass these instructions on to the end user of the fitting!
S.v.p remettre cette instruction à l'utilisateur de la robinetterie!