

71" JULIANNA OVAL DOUBLE RESIN FREESTANDING TUB

Cat. No.
RTDSN71



L: 70-3/4"
W: 34-5/8"
H: 25-1/4"

Water depth: 17" to top of tub
Water depth: 14-1/4" to overflow



Overflow Connection

The following is recommended for RTDSN71 tubs:

- Faucets: part #7082 or #7088
- Rigid, Freestanding Supplies: part #4502
- Freestanding filler: part #7901,7922 or 7952
(Does not need bath supplies)

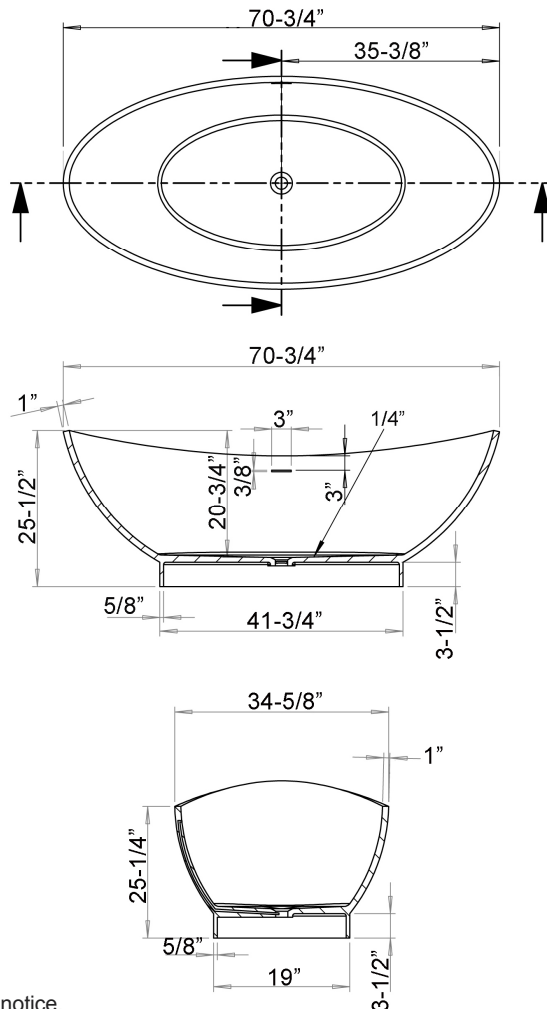
Gallon Capacity: 86
Shipping Weight: 404 lbs.
Empty Weight: 304 lbs.
Filled Weight: 1,022 lbs.

Features:

- ▶ Made of poly-resin blend that is the same color throughout
- ▶ 1" thick at rim
- ▶ Available in Matte or Gloss finish
- ▶ No faucet holes
- ▶ Built-in overflow slot
- ▶ Includes white pop-up drain
- ▶ Tub is thoroughly inspected before shipment
- ▶ IAPMO Certified

Tub Colors:

WH Matte White
WHGL Gloss White



Dimensions of fixture are nominal and specifications subject to change without notice.

09/19/2018

P 847•244•1234

www.barclayproducts.com