

# MR06560P

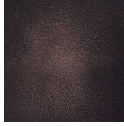
# INSTALLATION GUIDE

ryton towel warmer,  
plug-in

BRUSHED NICKEL(BN)



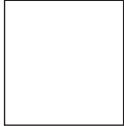
OIL RUBBED BRONZE(OB)



CHROME(CH)



WHITE(WH)



POLISHED NICKEL(PN)



BLACK(BK)



# artos<sup>®</sup>

MR06560P

## OPERATING SPECIFICATIONS

ryton towel warmer,  
plug-in



### FEATURES

Towel warming, drying and auxiliary heating.

### ELEMENT

300W, 110V

### CODES

UL Approved

CSA-US Approved

### REQUIREMENTS

The towel warmer must be installed so that the Element is at the bottom.

MR06560P

**PRODUCT DIMENSIONS**

ryton towel warmer,  
plug-in

