

ATELIER MES-801SB



*Flush-Mount Installation Kit is Required for Flush-Mount Installation

• FEATURES

16 gauge type 304 stainless steel
Tri-mount™ installation system

• TECHNICAL INFORMATION

External dimensions: 16" x 21" W x 10"D
Basin dimensions: 13"L x 18"W x 10"D
Frame width: 1-1/2"
Frame thickness: 1/4"

• FINISHES

Satin Brushed stainless steel (SB)

• INSTALLATION OPTIONS

Flush-mount (MTK-108AL is required)
Top-mount
Under-mount

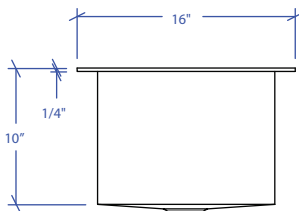
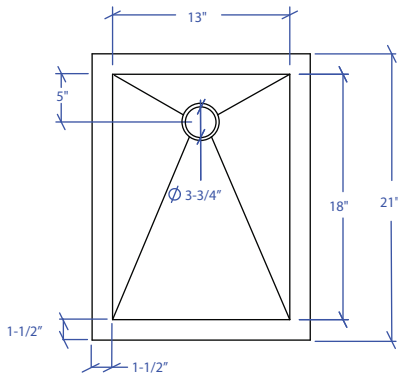
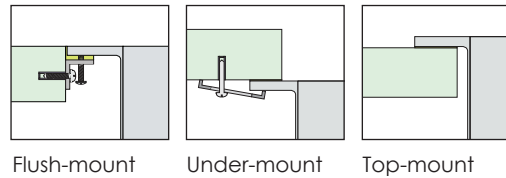
• MINIMUM CABINET SIZE (I.D.)

Flush-mount 18"
Top-mount 15"
Under-mount 19"

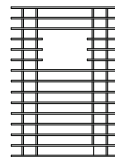
• INDUSTRY'S ONLY STAINLESS STEEL SINK DESIGNED SPECIFICALLY TO BE FLUSH-MOUNTED

• US PATENT PENDING

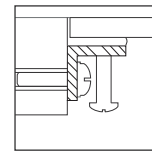
• Tri-mount Installation



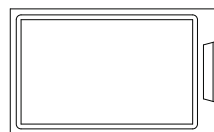
• ACCESSORY OPTIONS



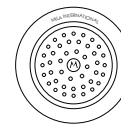
MBG-082SB
Basin Grid



MTK-108AL
Mounting Kit



MCB-801BB
Cutting Board



MKD-101PC
Strainer

ENTERTAINMENT TRI-MOUNT™

PROJECT INFORMATION			
Project			
Date	/ /	QTY	
Specifier			
Contact			
Note			