

# JASON<sup>®</sup>

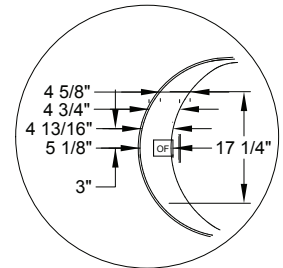
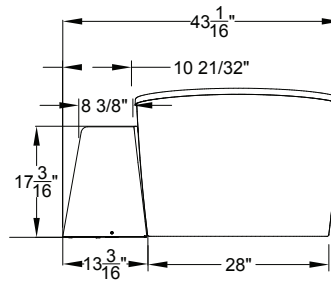
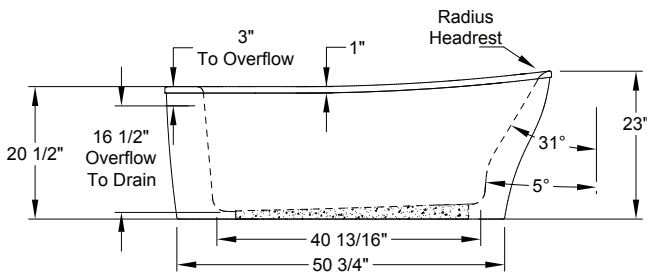
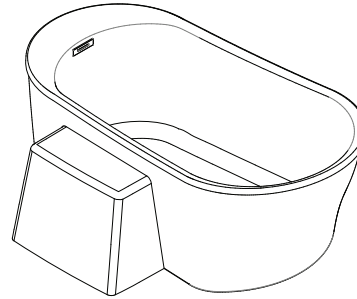
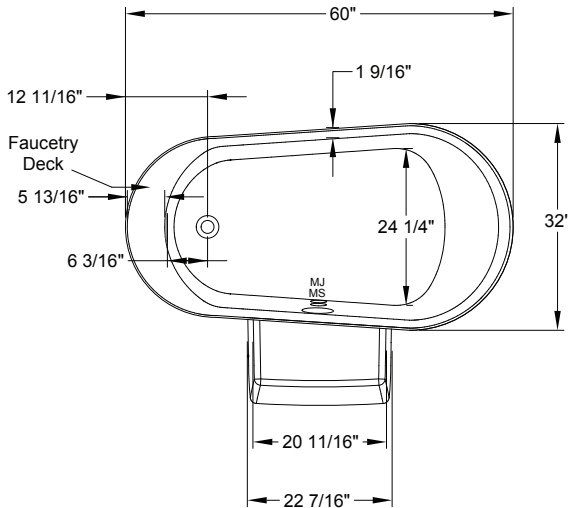
HYDROTHERAPY

8328 MacArthur Dr. • North Little Rock, AR 72118  
 501.771.4477 • Fax: 501.771.2333  
 Customer Service: 800.255.5766  
 www.jasoninternational.com

## forma<sup>®</sup> Collection Specifications

### HE527PS

#### MicroSilk<sup>®</sup>



Faucetry Deck Flat Dimensions

Patents received or pending.

Includes Linear Overflow Drain Assembly




Note: Dimensional Tolerances: ±1/4"

|                               |                       |
|-------------------------------|-----------------------|
| <b>Drop-in-Hole Size:</b>     | N/A                   |
| <b>Operating Capacity:</b>    | 34 Gal.               |
| <b>Overflow Capacity:</b>     | 71 Gal.               |
| <b>Floor Loading / sq.ft.</b> | 109.9 lbs.            |
| <b>Carton Wt.:</b>            | 154 lbs.              |
| <b>Cube:</b>                  | 33.7 ft. <sup>3</sup> |

Acrylic Equipment Cabinet is standard and required on MicroSilk<sup>®</sup> baths.

**Construction:** Fiberglass reinforced acrylic bath with Level Form<sup>™</sup> full-support base.

*We provide products listed with Intertek ETL SEMKO (Edison Testing Laboratories) U.S. and Canadian and with International Association of Plumbing and Mechanical Officials (IAPMO). Consult factory with your listing requirements.*

|                  |                                                                                                                                                                                                                                                                                                                                                                                                                                                                                      |
|------------------|--------------------------------------------------------------------------------------------------------------------------------------------------------------------------------------------------------------------------------------------------------------------------------------------------------------------------------------------------------------------------------------------------------------------------------------------------------------------------------------|
| <b>Standard</b>  |  <p>A 120V system that includes a MicroSilk unit; an electronic control; and a 20-minute timer.</p>                                                                                                                                                                                                                                                                                               |
| <b>Premier</b>   |  <p>A 120V system that includes a MicroSilk unit; (2) Chromatherapy mood lights, Automatic Ozone System; an electronic control; and a 20-minute timer. The keypad also operates the LED Chromatherapy mood lights.</p>                                                                                                                                                                            |
| <b>Signature</b> |  <p>A 120V system that includes a MicroSilk unit, (2) Chromatherapy mood lights; Automatic Ozone System; a digital control with LCD display window; low water and water temperature sensors; and a 20-minute timer. Control keypad operates the MicroSilk<sup>®</sup> unit, LED Chromatherapy mood lights and shows water temperature and time remaining. Includes Bluetooth Sound Immersion.</p> |