



Kitchen - Tara Ultra
POT FILLER Cold water valve - platinum matte
Article number: 30 805 875-06



- 19-5/8" Projection
- Swiveling spout
- Laminar stream
- One water inlet, no mixing function
- Water flow rate limited to max. 1.5 gpm
- Two valves for on / off function
- lead-free

Codes & Standards

- NSF/ANSI 372
- California Energy Commission (CEC)
- ASME A112.18.1/CSA B125.1
- NSF/ANSI/CAN 61

- Fittings group in compliance with DIN 4109: 1

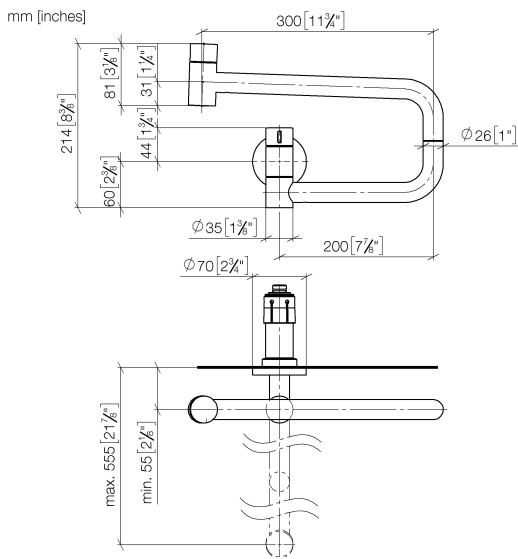


platinum matte

Accessory is required for this item.

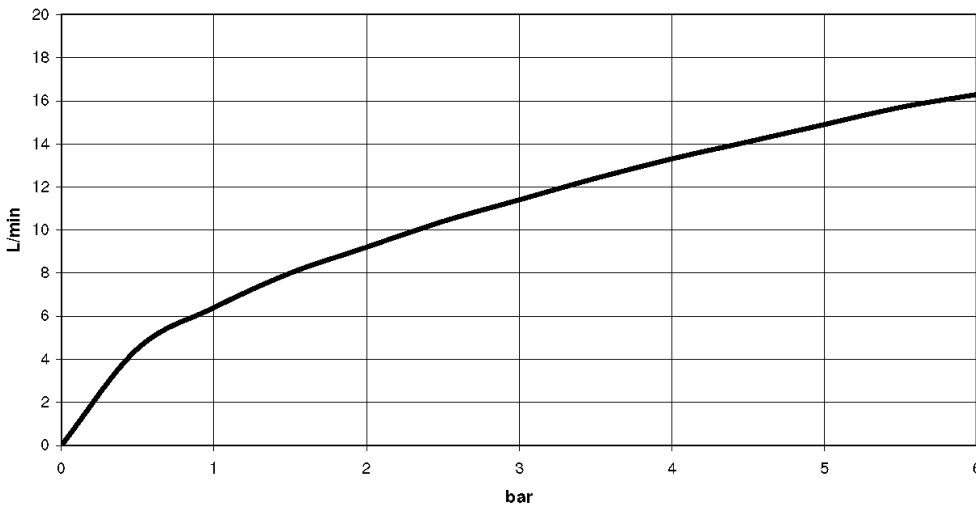
Kitchen - Tara Ultra
 POT FILLER Cold water valve - platinum matte
 Article number: 30 805 875-06

Dimensional drawing



All dimensions in mm / inch = mm x 0,0394

Flow rate chart





Kitchen - Tara Ultra
POT FILLER Cold water valve - platinum matte
Article number: 30 805 875-06

Other surface finishes



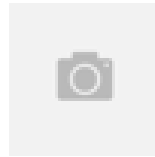
polished chrome
30 805 875-00



platinum
30 805 875-08



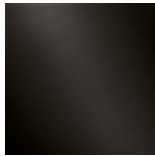
Durabass (23kt)
30 805 875-09



Brushed durabass (23kt)
30 805 875-28



chrome matte
30 805 875-93



Dark Platinum matte
30 805 875-99

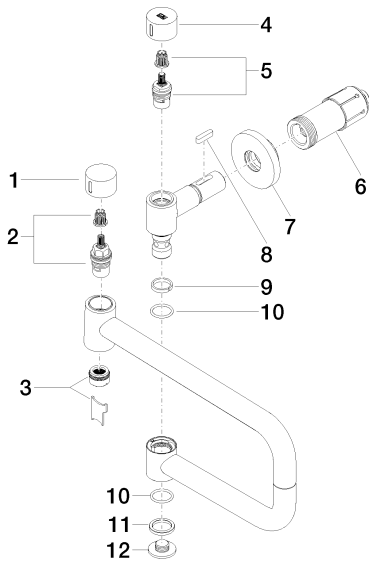
More custom finish options are available via special production (xTra Service). See our finish matrix for availability and pricing or contact a Dornbracht representative. Some series may be excluded and some finishes may not be available in all series.



35 087 970-90 0010
POT FILLER Rough-in wall
elbow -

Kitchen - Tara Ultra
 POT FILLER Cold water valve - platinum matte
 Article number: 30 805 875-06

Spare parts list



Number	Item Number	Designation	Number of units
1	09 20 62 025-06	handle	1
2	90 90 03 146 00 90	top	1
3	90 23 01 026 11-06	aerator	1
4	09 20 62 027-06	handle	1
5	90 90 03 171 00 90	top	1
6	90 30 01 213 00 90	connection	1
7	90 27 87 039 00-06	rosette	1
8	90 16 04 001 00 90	spring	1
9	09 28 10 136 90	ring	1
10	09 14 10 015 90	seal	2
11	09 28 10 139 90	ring	1
12	09 21 02 028-06	lid	1