



California Faucets®

INDUSTRIAL SINGLE HANDLE COMBO WATER DISPENSER

KITCHEN

9623-K30-XX

Features

- Over 28 finishes including 13 PVD finishes
- All brass construction
- Insulated body & spout to reduce heat to faucet
- Self-closing for hot water
- Max flow rate: 0.5 gpm (1.9 L/min); may vary based on hot water tank used
- Requires Hot Water Tank (9628SS); sold separately
- Faucet is **not** compatible with RO filter units

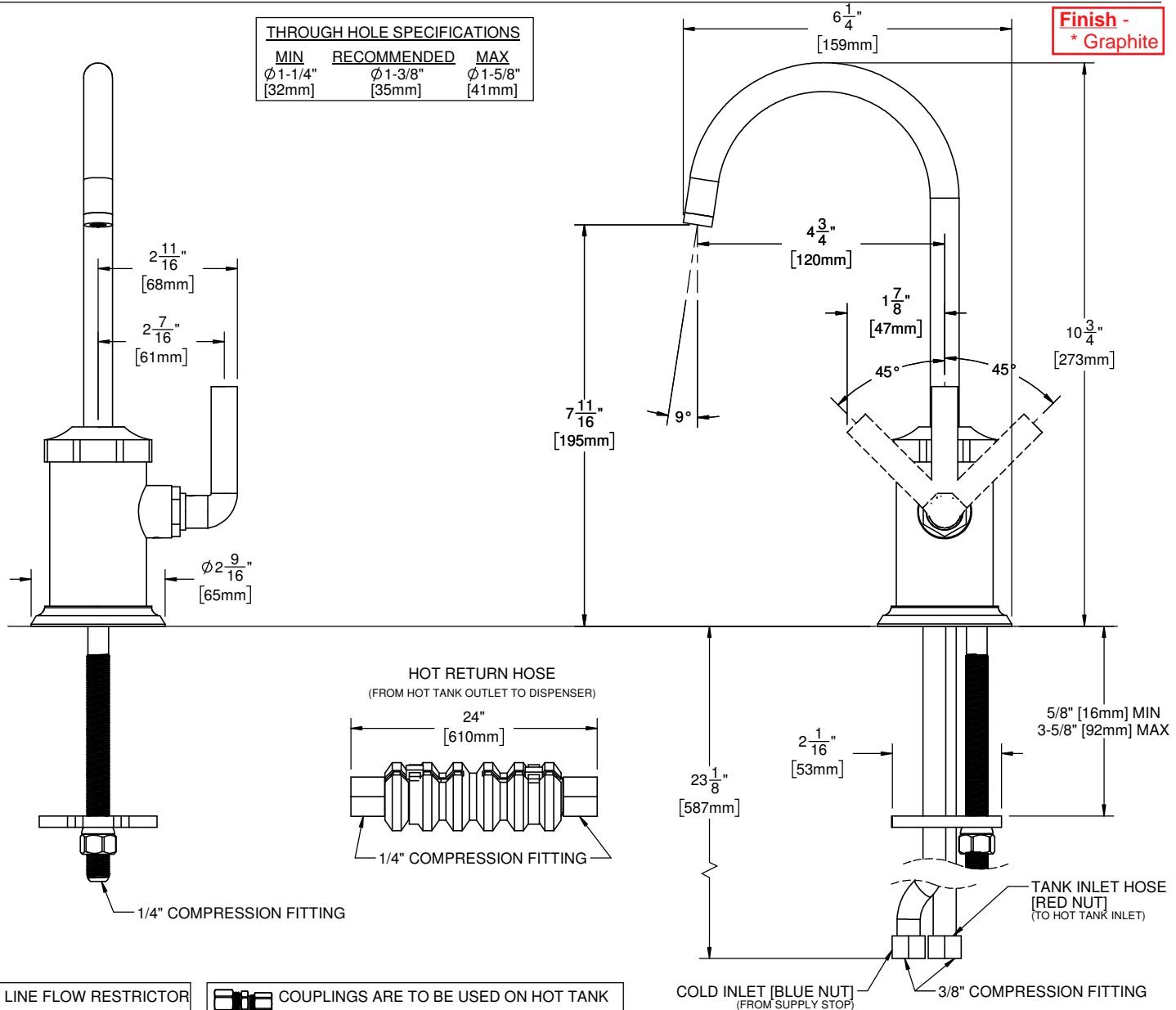
Codes/Standards Applicable

Meets or exceeds the following at date of manufacture:

- ASME A112.18.1/CSA B125.1
- NSF 61 and NSF 372
- CEC & DOE
- Commonwealth of MA
- ADA compliant



XX = DENOTES HANDLE SHOWN



SUPPLY LINE FLOW RESTRICTOR FOR 3/8" COMPRESSION FITTING 9/16"-24 MALE X FEMALE

COUPLINGS ARE TO BE USED ON HOT TANK 1@ 1/4" TANK OUTLET TO HOT RETURN HOSE 1@ 3/8" TANK INLET TO TANK INLET HOSE

SPECIFICATIONS SUBJECT TO CHANGE WITHOUT NOTICE

ALL DIMENSIONS SHOWN TO NEAREST 1/16" [ALL DIMENSIONS SHOWN TO NEAREST 1mm]