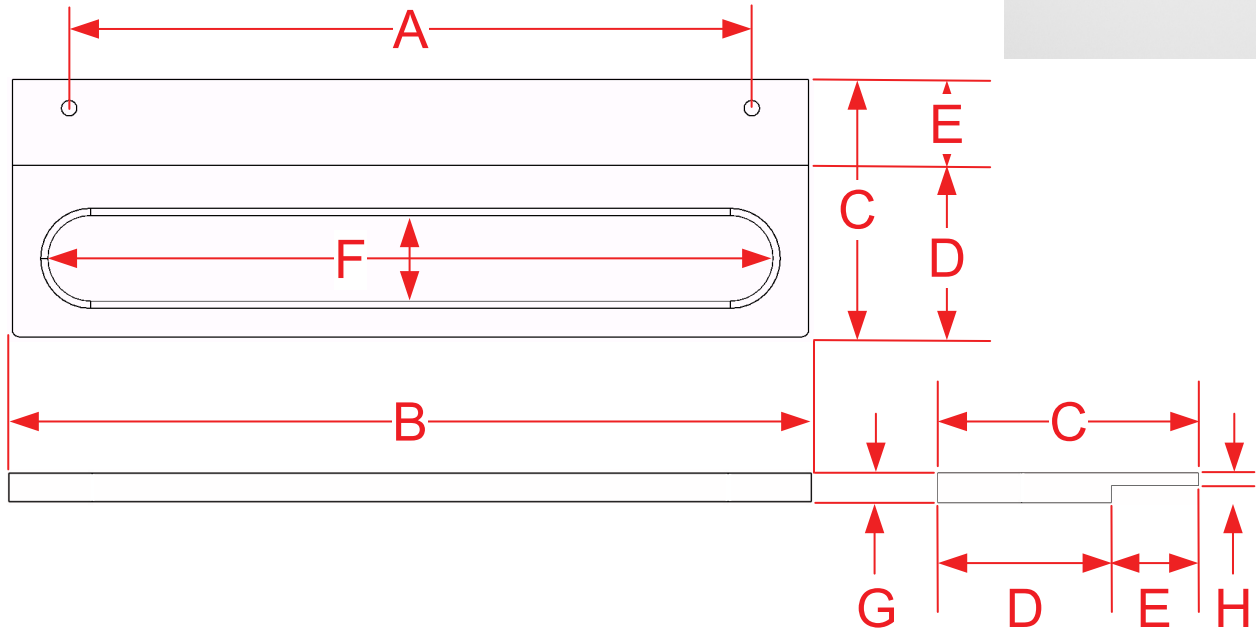
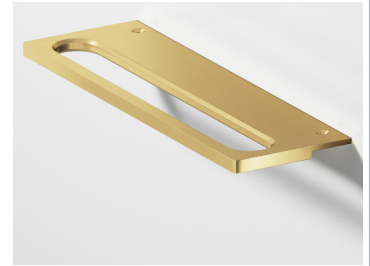


# 888 & 889 Series Edge Pull



Part #	A	B	C	D	E	F		G	H
	Center to Center	Overall Length	Overall	From Cabinet	Rear	Width	Height	Front	Rear
888-2	2.0000"	3.0000"	2.2500"	1.5000"	0.7500"	2.3750"	0.7500"	0.2500"	0.1250"
888-4	4.0000"	5.0000"	2.2500"	1.5000"	0.7500"	4.3750"	0.7500"	0.2500"	0.1250"
888-5	5.0000"	6.0000"	2.2500"	1.5000"	0.7500"	5.3750"	0.7500"	0.2500"	0.1250"
888-6	6.0000"	7.0000"	2.2500"	1.5000"	0.7500"	6.3750"	0.7500"	0.2500"	0.1250"
888-8	8.0000"	10.0000"	2.2500"	1.5000"	0.7500"	9.3750"	0.7500"	0.2500"	0.1250"
888-10	10.0000"	12.0000"	2.2500"	1.5000"	0.7500"	11.3750"	0.7500"	0.2500"	0.1250"
Custom sizing available up to 12"					Ships with finished #5 screws				

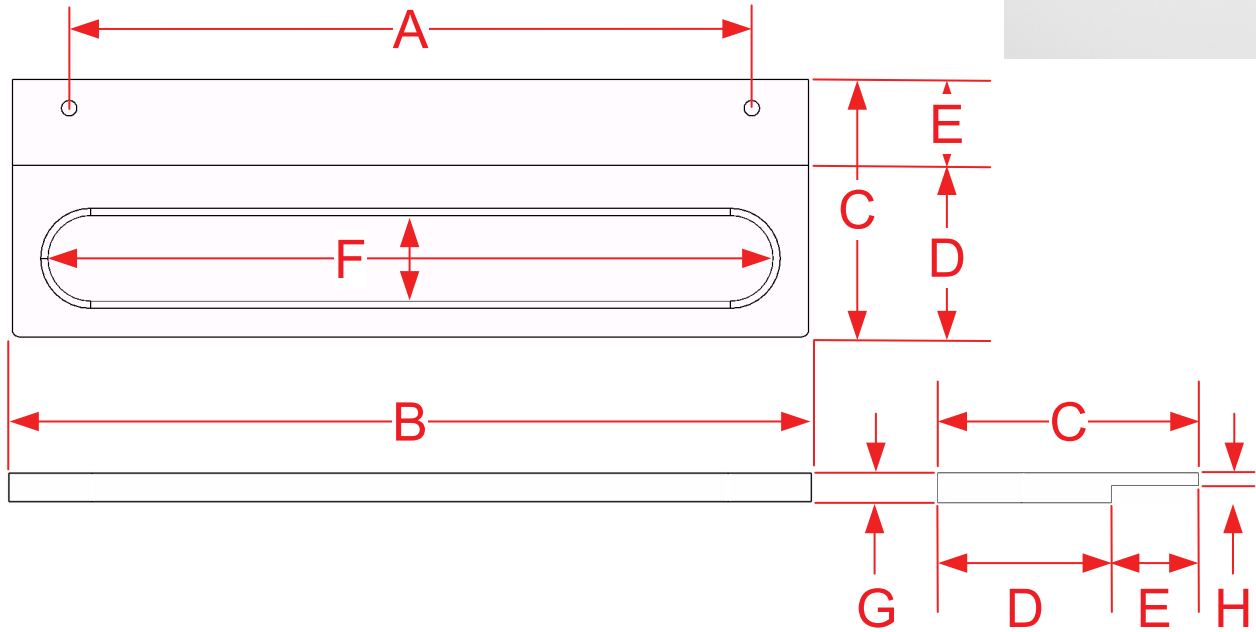
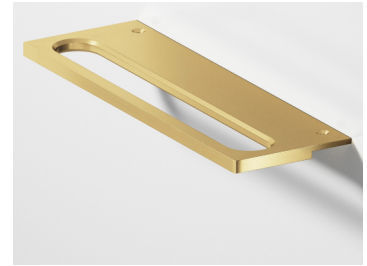


Manufacturing Fine Architectural Hardware  
in the USA Since 1927



Copyright 2024  
Colonial Bronze Company  
All rights reserved  
[www.colonialbronze.com](http://www.colonialbronze.com)  
860.489.9233

# 888 & 889 Series Edge Pull



Part #	A	B	C	D	E	F		G	H
	Center to Center	Overall Length	Overall	From Cabinet	Rear	Width	Height	Front	Rear
889-8	8.000"	10.0000"	2.7500"	2.0000"	0.7500"	9.1250"	1.0000"	0.5000"	0.1250"
889-10	10.000"	12.0000"	2.7500"	2.0000"	0.7500"	11.1250"	1.0000"	0.5000"	0.1250"
889-12	12.000"	14.0000"	2.7500"	2.0000"	0.7500"	13.1250"	1.0000"	0.5000"	0.1250"
889-18	18.000"	20.0000"	2.7500"	2.0000"	0.7500"	19.1250"	1.0000"	0.5000"	0.1250"
889-24	24.000"	26.0000"	2.7500"	2.0000"	0.7500"	25.1250"	1.0000"	0.5000"	0.1250"
Custom sizing available up to 26"					Ships with finished #5 screws				

Page 2 of 2



Manufacturing Fine Architectural Hardware  
in the USA Since 1927



Copyright 2024  
Colonial Bronze Company  
All rights reserved  
[www.colonialbronze.com](http://www.colonialbronze.com)  
860.489.9233