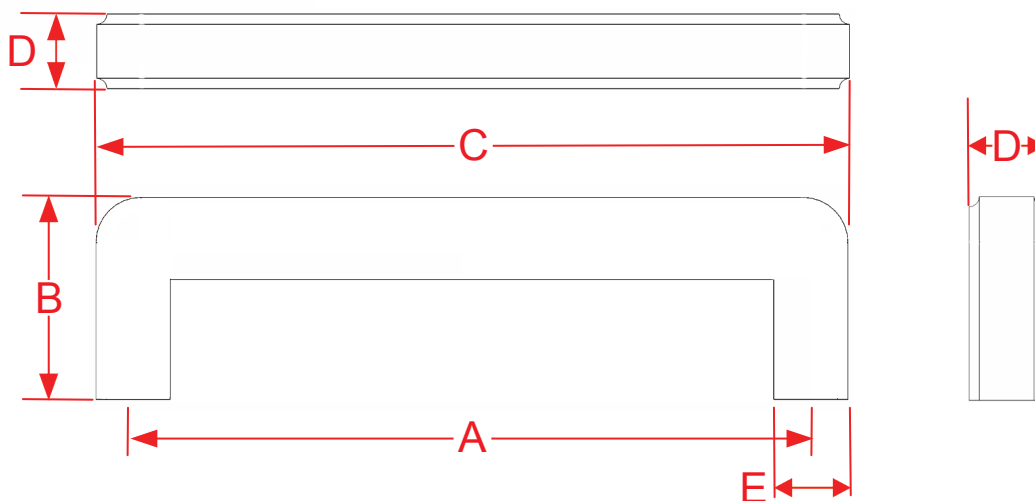
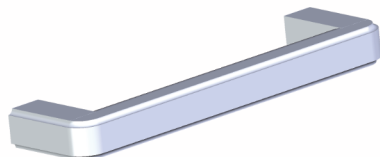


Series 790, 792 & 795 Cabinet, Appliance, Shower & Door Pulls

Finishes for Life
FINISH-FREE GUARANTEED



	A	B	C	D	E
Part #	Center to Center	Projection	Overall	Width	Base
790-4	4.0000"	1.1875"	4.4375"	0.4375"	0.4375"
790-5	5.0000"	1.1875"	5.4375"	0.4375"	0.4375"
790-6	6.0000"	1.1875"	6.4375"	0.4375"	0.4375"
790-8	8.0000"	1.1875"	8.4375"	0.4375"	0.4375"
790-10	10.0000"	1.1875"	10.4375"	0.4375"	0.4375"
The 790 is offered in custom sizing up to 27 7/16" overall					
792-6	6.0000"	1.1250"	6.3750"	0.6250"	0.3750"
792-8	8.0000"	1.1250"	8.3750"	0.6250"	0.3750"
792-10	10.0000"	1.1250"	10.3750"	0.6250"	0.3750"
792-12	12.0000"	1.1250"	12.3750"	0.6250"	0.3750"
The 792 is offered in custom sizing up to 27 3/8" overall				Page 1 of 2	



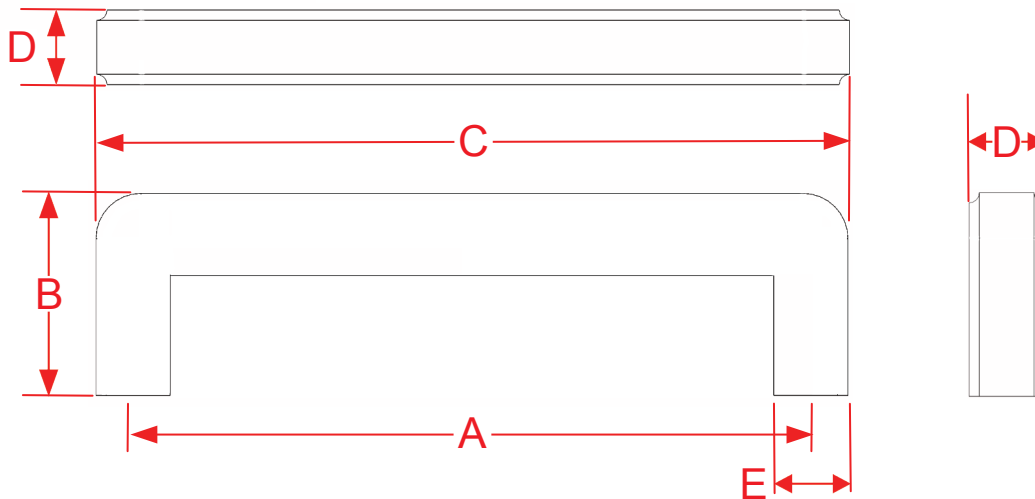
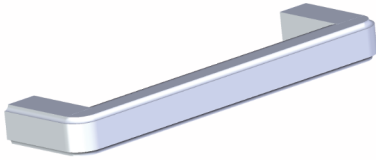
Manufacturing Fine Architectural Hardware
in the USA Since 1927



Copyright
Colonial Bronze Company
All rights reserved
www.colonialbronze.com -
860.489.9233

Series 790, 792 & 795 Cabinet, Appliance, Shower & Door Pulls

Finishes for Life
FINISH-FREE GUARANTEED



Part #	A Center to Center	B Projection	C Overall	D Width	E Base
795-6	6.0000"	1.6250"	6.7500"	1.0000"	0.7500"
795-8	8.0000"	1.6250"	8.7500"	1.0000"	0.7500"
795-10	10.0000"	1.6250"	10.7500"	1.0000"	0.7500"
795-12	12.0000"	1.6250"	12.7500"	1.0000"	0.7500"
795-18	18.0000"	1.6250"	18.7500"	1.0000"	0.7500"
795-24	24.0000"	1.6250"	24.7500"	1.0000"	0.7500"
The 795 is offered in custom sizing up to 27 3/4" overall				Page 2 of 2	



Manufacturing Fine Architectural Hardware
in the USA Since 1927



Copyright
Colonial Bronze Company
All rights reserved
www.colonialbronze.com -
860.489.9233