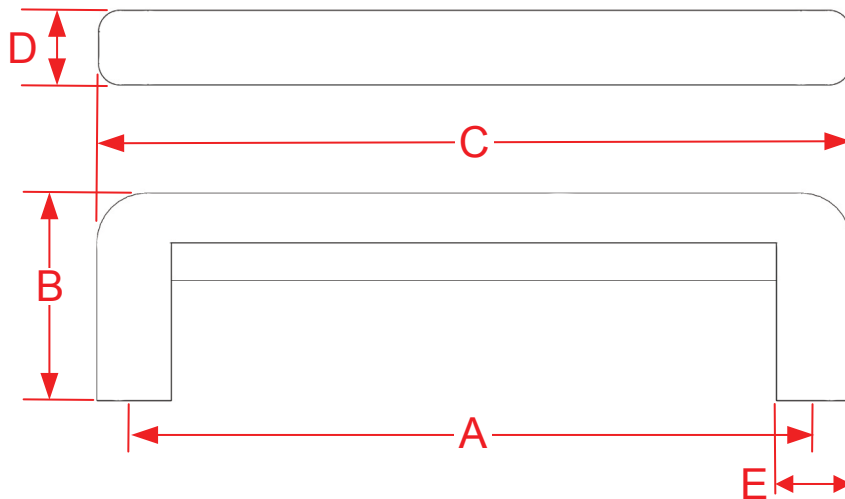
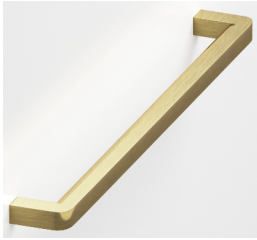


Series 780, 782 & 785 Cabinet, Appliance, Shower & Door Pulls

Finishes for Life
TARNISH-FREE GUARANTEED



Side Cross Section

Part #	A Center to Center	B Projection	C Overall	D Width	E Base
780-4	4.0000"	1.1875"	4.4375"	0.4375"	0.4375"
780-5	5.0000"	1.1875"	5.4375"	0.4375"	0.4375"
780-6	6.0000"	1.1875"	6.4375"	0.4375"	0.4375"
780-8	8.0000"	1.1875"	8.4375"	0.4375"	0.4375"
780-10	10.0000"	1.1875"	10.4375"	0.4375"	0.4375"
The 780 is offered in custom sizing up to 27 7/16" overall					
782-6	6.0000"	1.1250"	6.3750"	0.6250"	0.3750"
782-8	8.0000"	1.1250"	8.3750"	0.6250"	0.3750"
782-10	10.0000"	1.1250"	10.3750"	0.6250"	0.3750"
782-12	12.0000"	1.1250"	12.3750"	0.6250"	0.3750"
The 782 is offered in custom sizing up to 27 3/8" overall				Page 1 of 2	



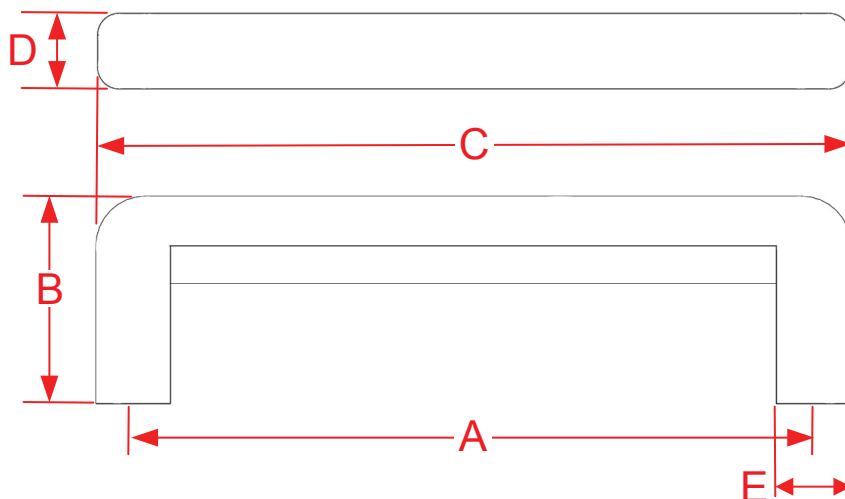
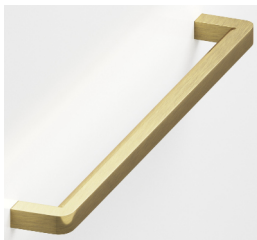
Manufacturing Fine Architectural Hardware
in the USA Since 1927



Copyright
Colonial Bronze Company
All rights reserved
www.colonialbronze.com -
860.489.9233

Series 780, 782 & 785 Cabinet, Appliance, Shower & Door Pulls

Finishes for Life
TARNISH-FREE GUARANTEED



Side Cross Section

Part #	A Center to Center	B Projection	C Overall	D Width	E Base
785-6	6.0000"	1.6250"	6.7500"	1.0000"	0.7500"
785-8	8.0000"	1.6250"	8.7500"	1.0000"	0.7500"
785-10	10.0000"	1.6250"	10.7500"	1.0000"	0.7500"
785-12	12.0000"	1.6250"	12.7500"	1.0000"	0.7500"
785-18	18.0000"	1.6250"	18.7500"	1.0000"	0.7500"
785-24	24.0000"	1.6250"	24.7500"	1.0000"	0.7500"
The 765 is offered in custom sizing up to 27 3/4" overall				Page 2 of 2	



Manufacturing Fine Architectural Hardware
in the USA Since 1927



Copyright
Colonial Bronze Company
All rights reserved
www.colonialbronze.com -
860.489.9233