

Avanity

CARINA-V60-CT

Features

- Solid teak wood, plywood
- 4 soft-close doors, 2 interior shelves
- 2 soft-close drawers
- Adjustable height levelers

Caractéristiques

- Teck massif et contreplaqué
- Quatre portes à fermeture douce et deux tablettes intérieures
- Deux tiroirs à fermeture douce
- Patins réglables en hauteur

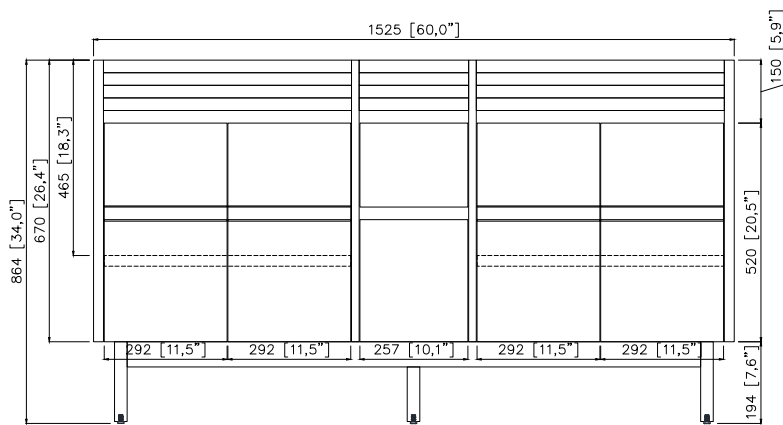
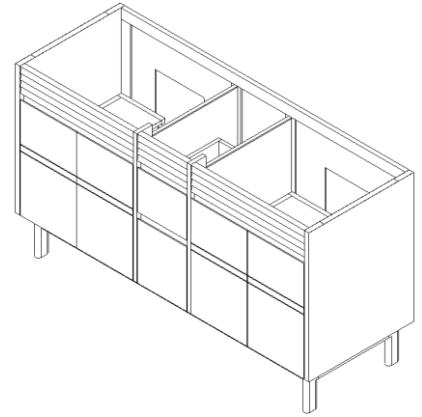
Colors / Couleurs

- Coffee Teak finish / Fini teck café

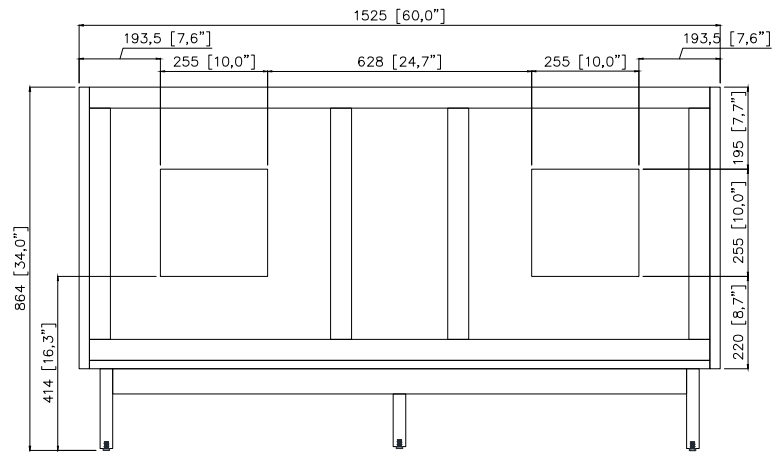
Nominal Dimension / Dimension Nominale

- 60W x 21.5D x 34H inches | 1525 x 545 x 864 mm

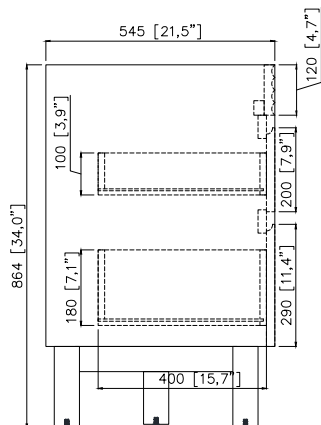
Product Diagrams / Diagrammes Produit



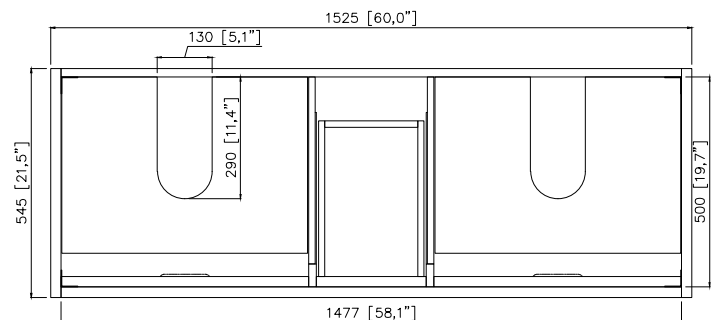
Front / Devant



Back / Derrière



Side / Côté



Top / Haut

For customer support, please call Avanity Corporation at 866-522-5578 weekdays 9 a.m to 5 p.m PST
 Pour le support client, s'il vous plaît appelez au 866-522-5578 Avanity Corporation jours de semaine 9h00-17h00 PST

Avanity

EUT61xx-RS
SUT61xx-RS

Features

- 25mm thickness top material
- Pre-installed with rectangular sink CUM20WT-R
- Top pre-drilled for 8" widespread faucet
- 4" backsplash included

Caractéristiques

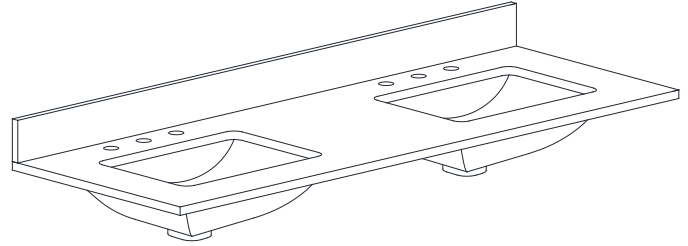
- Matériau supérieur de 25 mm d'épaisseur
- Pré-installé avec évier rectangulaire CUM20WT-R
- Dessus pré-percé pour un robinet large de 8 po
- Dosseret de 4" inclus

Colors / Couleurs

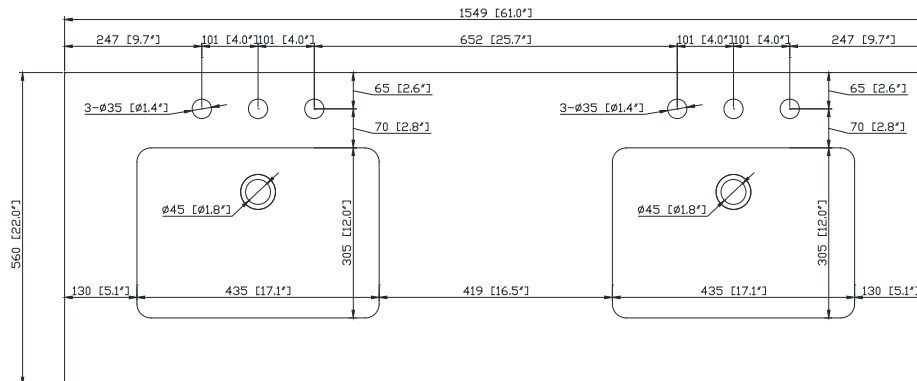
- Cala White / Cala Blanc
- Carrara White / Blanc de Carrare
- White / Blanc

Nominal Dimension / Dimension Nominale

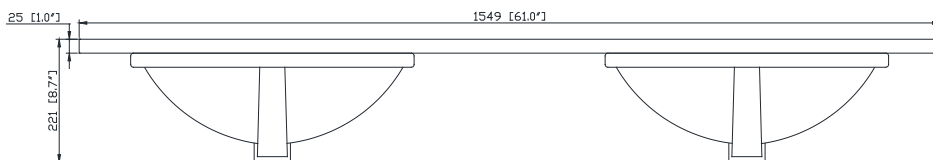
- 61W x 22D x 8.7H inches | 1549 x 560 x 221 mm



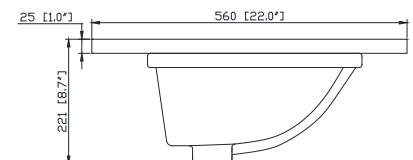
Product Diagrams / Diagrammes Produit



Top / Haut



Front / De face



Side / Côté