

RainDrain Match Regular
Trim Classic for 27 5/8" Rough with Height Adjustable Frame
 Finish: **Brushed Stainless Steel** Part no. : **56118801**



Description

Features

- Consists of: design trim, height adjustable frame, wall installation flange, hair catcher sieve
- Mounting type: wall-mounted, free in the floor
- Easy to clean surface
- Easy adjustment to tile thickness with height adjustable frame (0.27– 0.7")
- Floor thickness: up to 1.57"
- Suitable for any type of tile
- Up to 60 l/min drainage capacity
- Where to use: new construction, renovation
- Grate removal tool allows easy removal of the trim
- Wall mounting possible
- tile inlay depth: 0.47"
- Grate material: Stainless Steel 304 (1.4301)
- Suitable for primary and secondary drainage
- Frame width: 2.44"

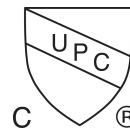
Item details

List Price \$ 347.00

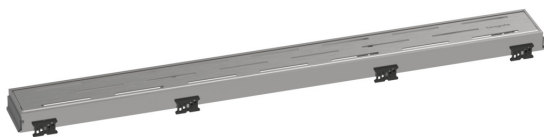
Technology



Compliance / Sustainability



Product image



Scale drawing

