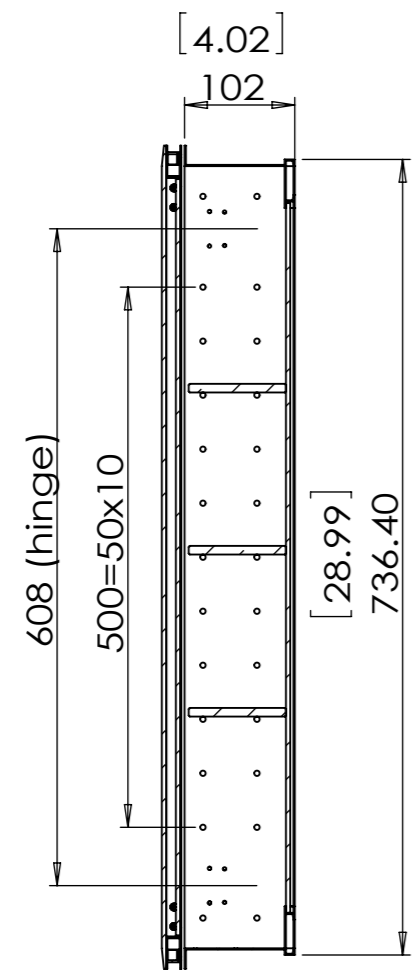
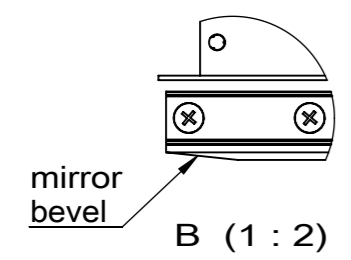
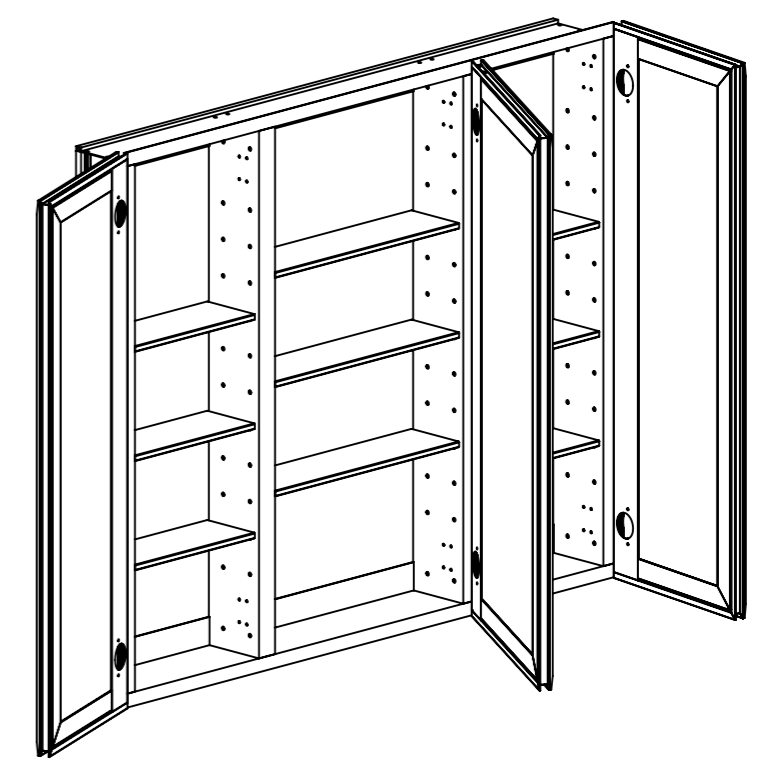
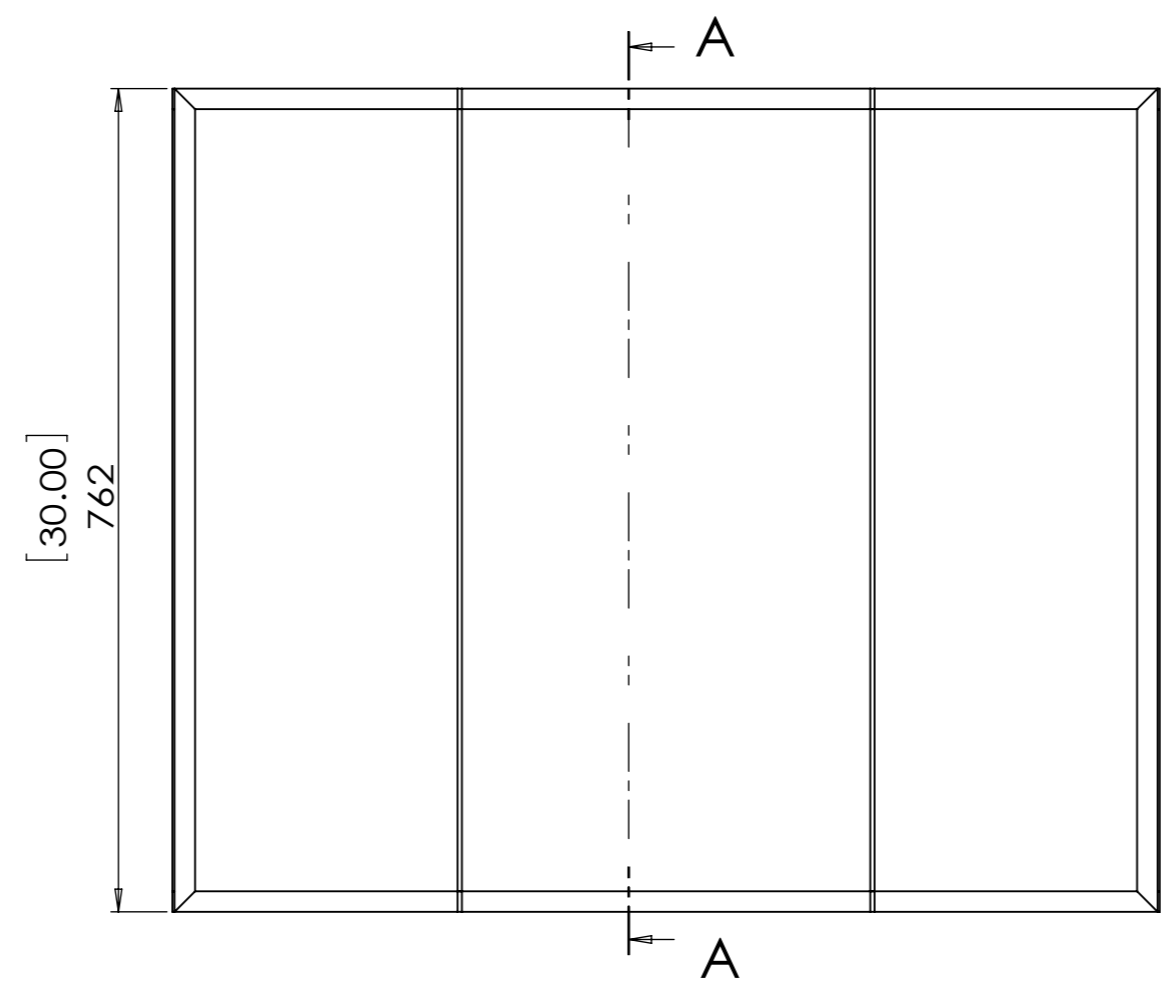


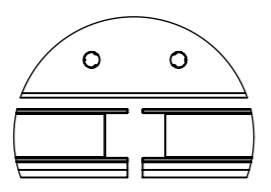
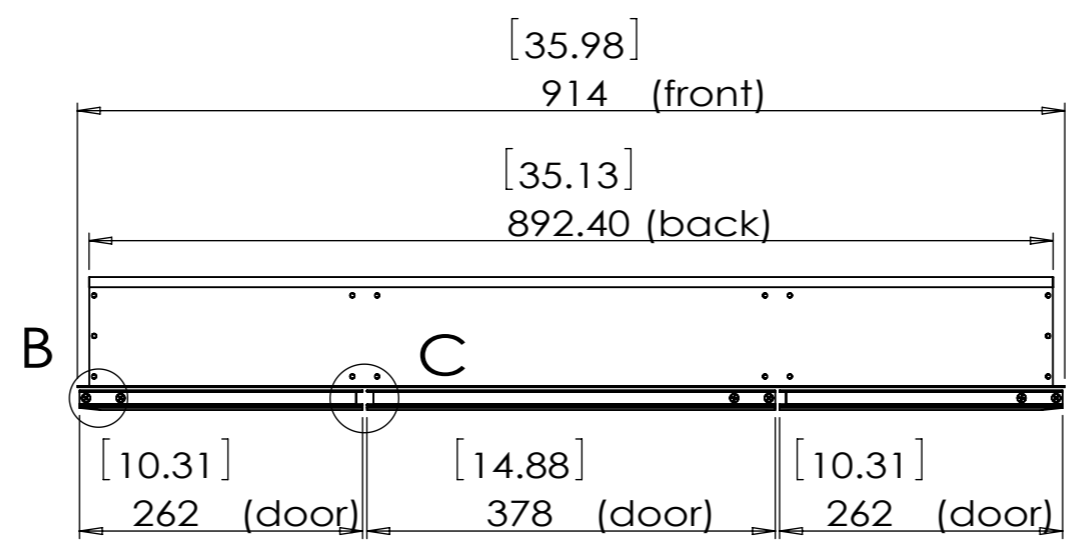
Item XX	Quantity XX	Edited by XX	Approved date XX	Approved by XX
------------	----------------	-----------------	---------------------	-------------------



A-A



B (1 : 2)



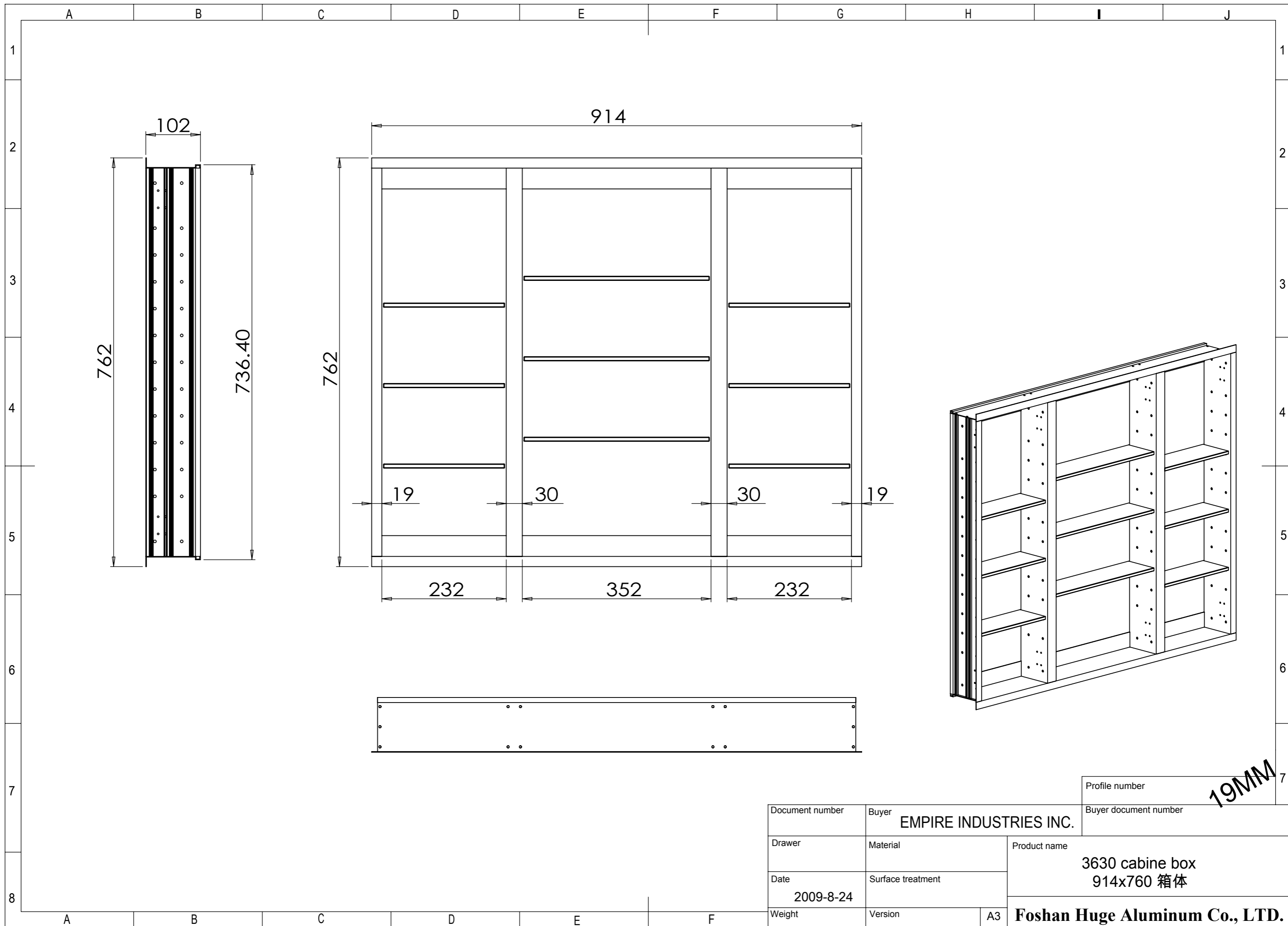
C (1 : 2)

19MM

item	size	quantity
Box	914*762	1
door	378*762	1
door	262*762	2
hinge	850D+3SC	2
hinge	850D+0SC	4
glass shelf	346*90*8	3
glass shelf	226*90*8	6

Created by HUGE	Tolerance	Sheet 1(1)	Replaces document	
Designed by	Product 3630B medicine cabine 914x762 药箱		Model no.	
		Created date 2009-7-27	Scale 1:7	
<b>EMPIRE INDUSTRIES INC.</b>				

A3

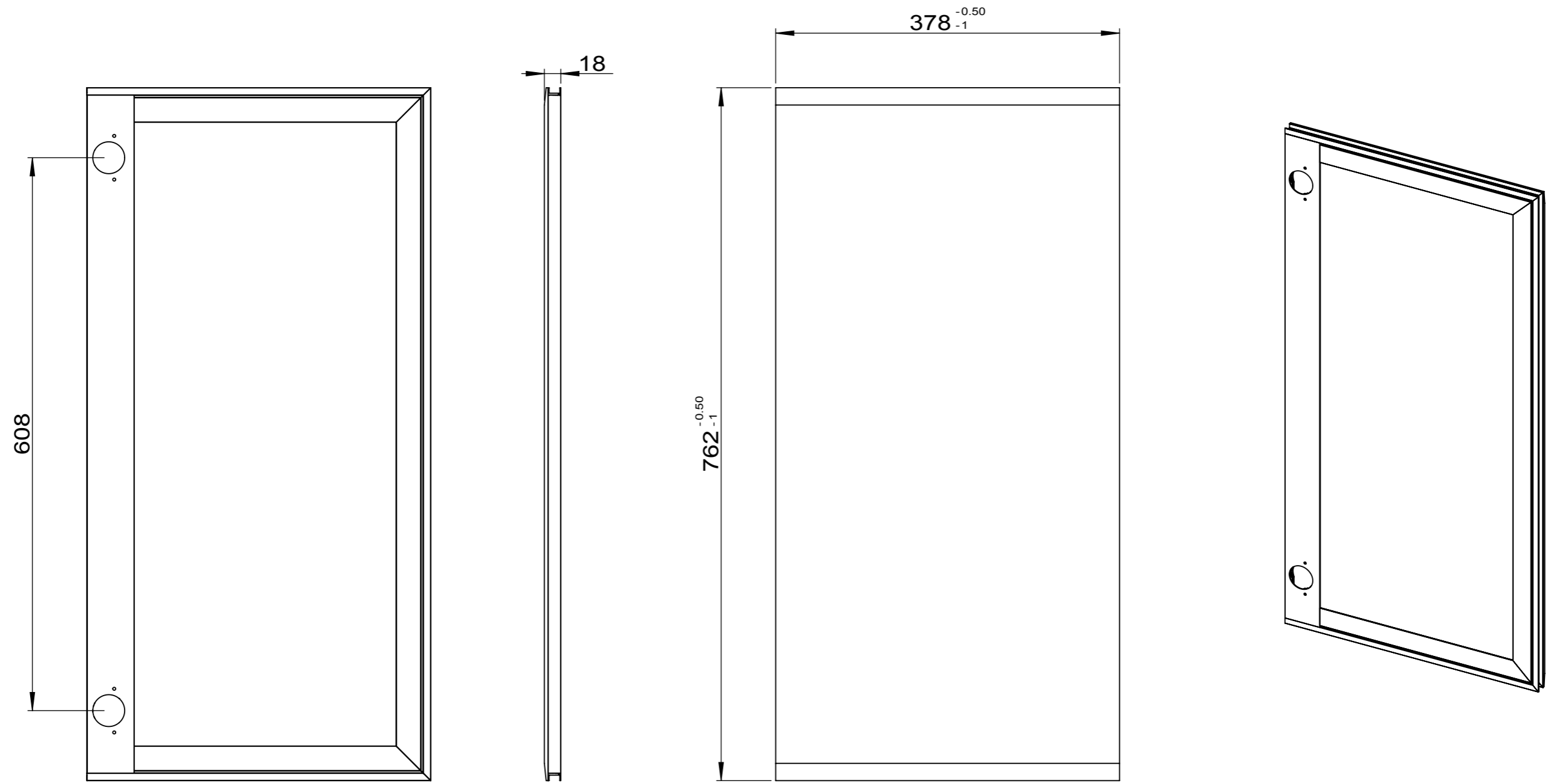


Profile number  
19MM

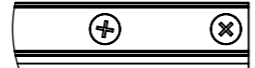
Document number	Buyer <b>EMPIRE INDUSTRIES INC.</b>	Buyer document number
Drawer	Material	Product name <b>3630 cabine box 914x760 箱体</b>
Date 2009-8-24	Surface treatment	
Weight	Version	<b>Foshan Huge Aluminum Co., LTD.</b>

A3

Item XX	Quantity XX	Edited by XX	Approved date XX	Approved by XX
------------	----------------	-----------------	---------------------	-------------------



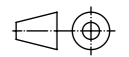
1pcs/set



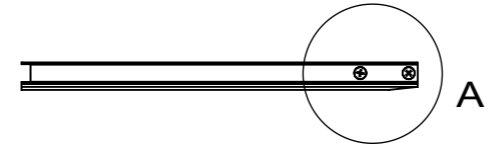
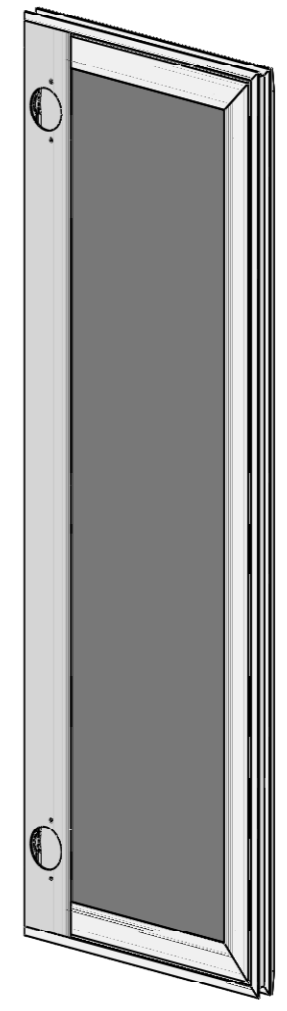
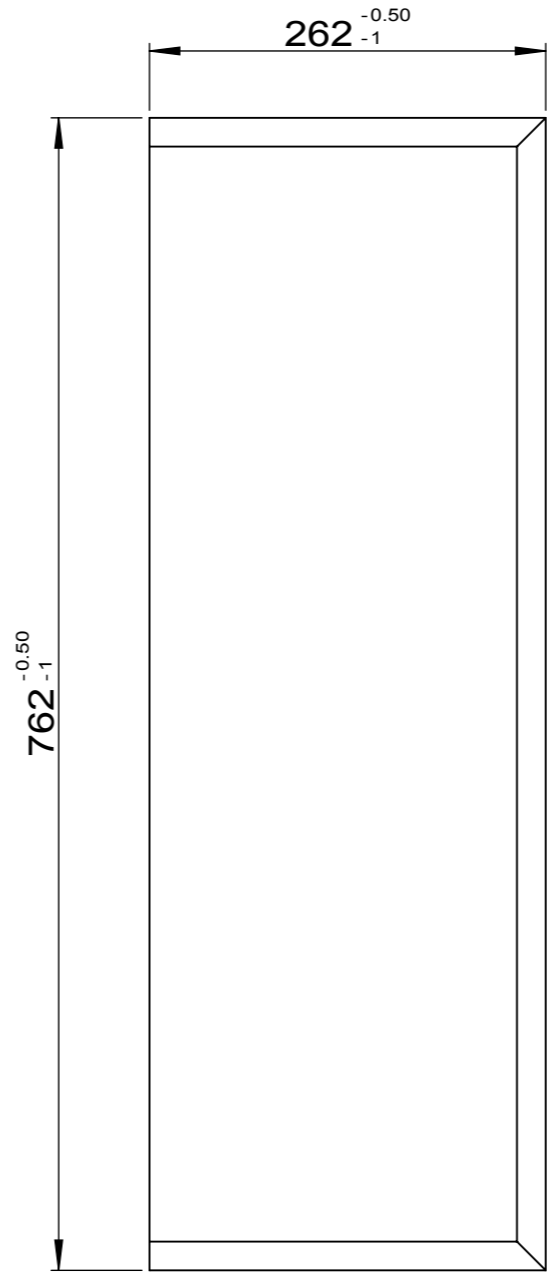
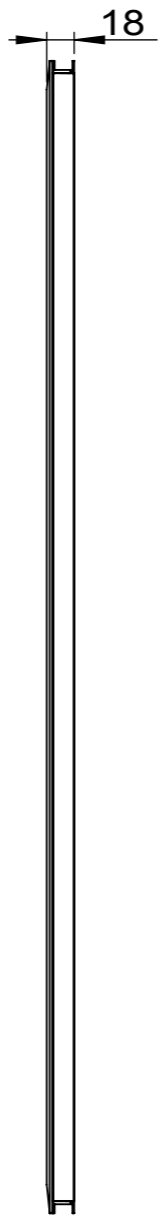
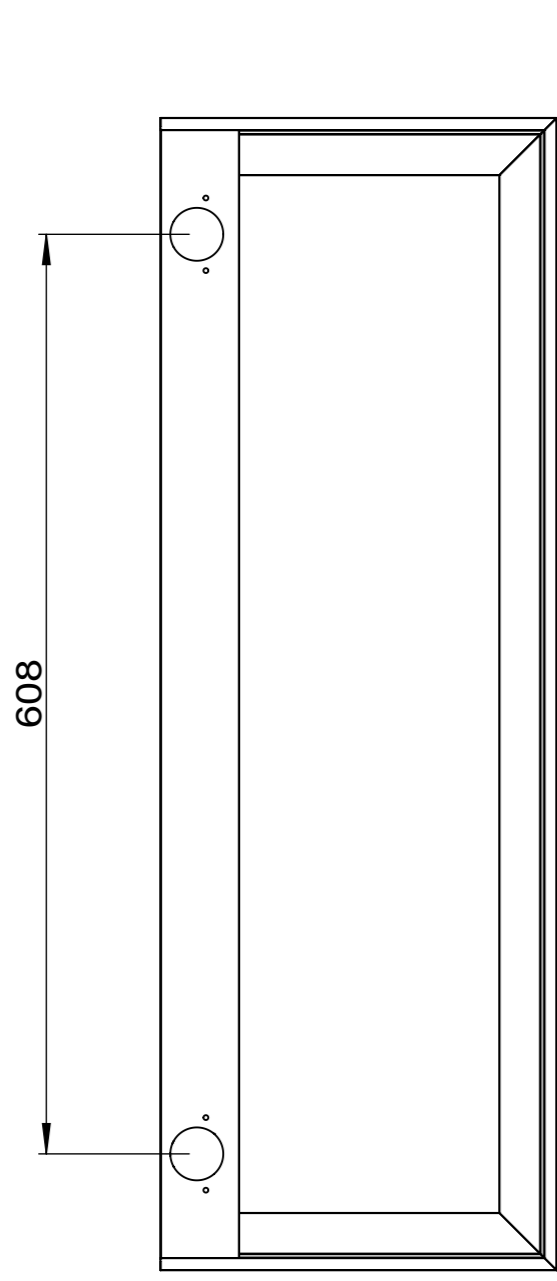
SECTION A-A  
SCALE 1 : 2

A3

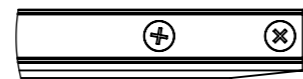
19MM

Created by <b>HUGE</b>	Tolerance	Sheet 1(1)	Replaces document	
Designed by	Product <b>3630B cabinet door-L 914x762 药箱门—左</b>		Model no.	 Scale 1:5
			Created date 2009 08 22	
<b>EMPIRE INDUSTRIES INC.</b>				

Item XX	Quantity XX	Edited by XX	Approved date XX	Approved by XX
------------	----------------	-----------------	---------------------	-------------------



2pcs/set



SECTION A-A  
SCALE 1 : 2

A3

Created by <b>HUGE</b>	Tolerance	Sheet 1(1)	Replaces document
Designed by	Product <b>3630B cabinet door-R 914x762 药箱门—右</b>	Model no.	Scale 1:5
		Created date 2009 08 22	
<b>EMPIRE INDUSTRIES INC.</b>			

19MM