

Croma
Showerpipe 150 1-Jet, 2.0 GPM
 Finish: **chrome** Part no. : **27169001**



Description

Features

- Spray type overhead shower: RainAir
- Flow rate of hand shower at 3 bar: 1.8 GPM (6.8 L/Min)
- Maximum flow rate for Showerpipe: 2.0 GPM (7.6 L/Min)
- Height-adjustable hand shower holder
- Anti-scald 100° safety stop
- Integrated volume control/diverter for 2 functions
- Outlets may not be operated simultaneously
- Exposed installation
- Thermostatic cartridge
- EPD Showerpipes

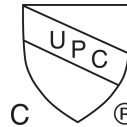
Item details

List Price \$ 1,196.00

Technology



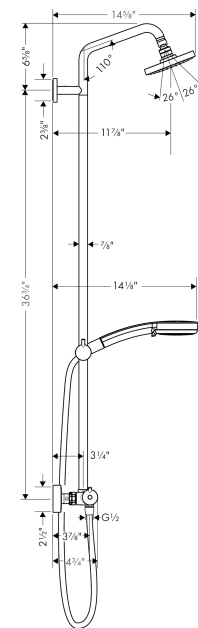
Compliance / Sustainability



Product image



Scale drawing

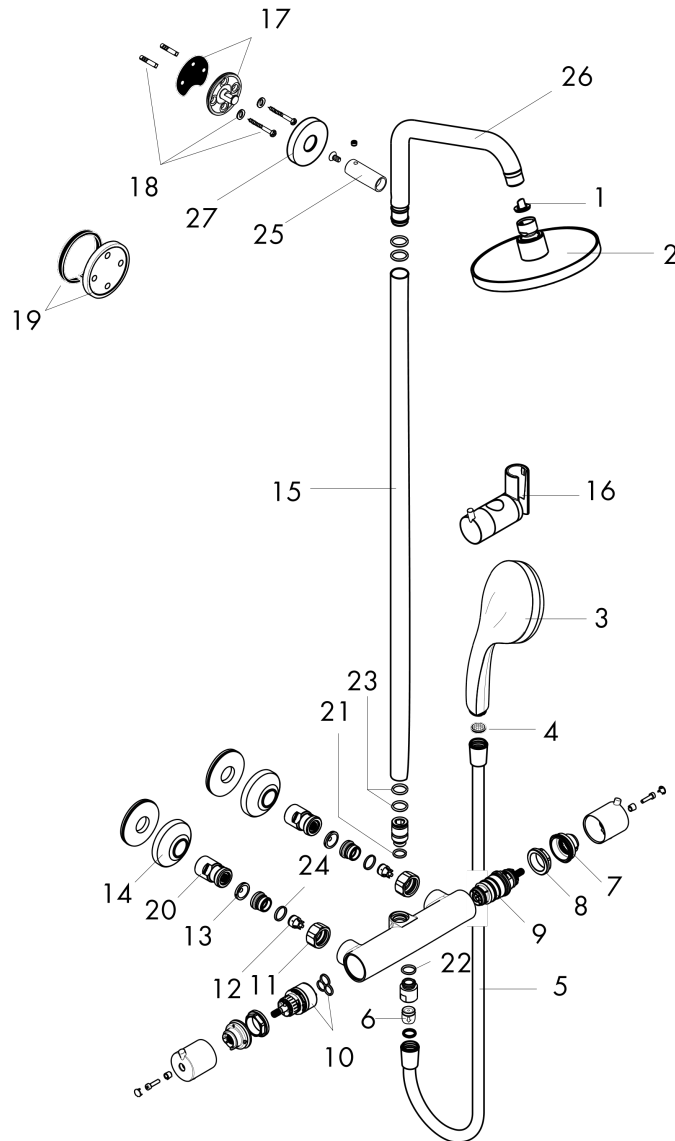


Croma
Showerpipe 150 1-Jet, 2.0 GPM
 Finish: **chrome** Part no. : **27169001**



Exploded drawing

Year of production: >07/12



Croma
Showerpipe 150 1-Jet, 2.0 GPM
 Finish: **chrome** Part no. : **27169001**



Spare parts list

Year of production: >07/12

Pos.	Description	Part no.	Price	PU
1	filter packing	88649000	-	1
2	head shower	04342000	-	1
3	handshower	04083000	-	1
4	filter packing	94246000	-	1
5	shower hose 1,60 m	28276003	-	1
6	non return valve	97980000	-	1
7	safety set for temperature control	98916000	-	1
8	nut	98913000	-	1
9	thermostat cartridge	98282000	-	1
10	shut off unit with selector	98283000	-	1
11	set of nuts	96157000	-	1
12	non return valve	96737000	-	1
13	filter packing	96922000	-	1
14	escutcheon	98340000	-	1
15	pipe 1450 mm	96770000	-	1
16	support, assy	97651000	-	1
17	wall flange	95688000	-	1
18	mounting set	96179000	-	1
19	tile-matching-disk 7 mm	95239000	-	1
20	isolation valve	98341000	-	1
21	O-ring 12x2	98214000	-	1
22	O-ring 14x2	98129000	-	1
23	O-ring 15x2,5	98131000	-	1
24	O-ring 17x1,5	98137000	-	1
25	sleeve	92166000	-	1
26	shower arm	95137000	-	1
27	escutcheon Ø 60 mm	95692000	-	1