



Designer Collection Tubs  
Model # 239A

## Andrea 28 with Sculpted Finish® 66" x 30" x 22"

### GENERAL SPECIFICATIONS:

**Material** - Acrylic

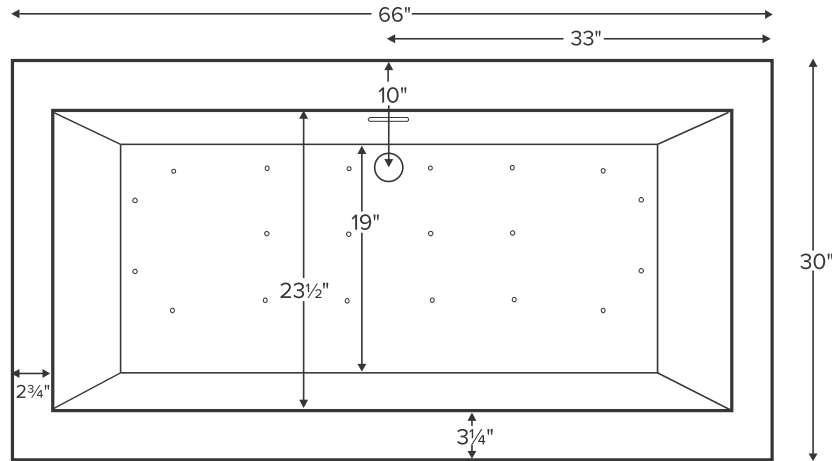
**Installation** - Freestanding\* (see note to left)

**Soaker Weight** - 135 lbs / 61 kg

**Maximum Fill** - 71 gal to overflow

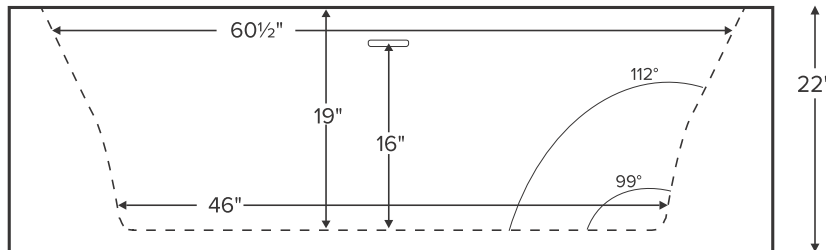
NOTE: Filling this tub to the maximum may require an above average size or dedicated water heater.

\*Sculpted Finish is standard on 4 sides, creating a freestanding tub design.  
Also available finished on 1, 2 or 3 sides for various installation applications.



The Sculpted Finish process does not allow enough space for mounting fixtures on the tub deck.  
This tub features an integrated slotted overflow with direct toe tap drain.

Shown as Air Bath



### ELECTRICAL COMPONENTS & SPECIFICATIONS

Required Electrical Service - 110 Volt

Hydrotherapy Package	Components Included	GFCI
<b>Air Massage</b>	heated blower	1-15 amp
<b>Air Massage Elite</b>	heated blower, chromatherapy	1-15 amp

For electrical requirements of tub options, see specific options specs  
CSA Certified C/US; ANSI Z124.1 for plastic tubs and ANSI 112.19.7 for whirlpool components.

### IMPORTANT ORDERING & INSTALLATION INFORMATION:

- Before ordering or installing, please consider future access to equipment.
- Unless ordering Sculpted Finish on 4 sides, please include a diagram specifying which sides will need to be finished, along with location of optional tile flange.
- This tub comes with an integrated overflow with direct connect toe tap drain provided to complete installation on-site. Align tub drain with drain pipe rough-in.
- When ordering an air bath, the air blower must be remote mounted.
- Microbubbles system components must be installed on a non-Sculpted Finish side. Components will extend beyond the perimeter of the tub. Call MTI for specific details regarding the desired installation before placing the order.
- Radiance placed on floor locations will affect placement of air jets.
- If tub is equipped with Chromatherapy, the control box must be remote mounted.
- Specifications and configurations are subject to change without notice.
- Measurements are  $\pm 1/2"$  and are subject to change without notice.
- Measurements herein supersede all others published prior to publication date shown below.

See the "Designer Collection Tubs Installation & Operation Manual" included with tub delivery or go to:  
[mtibaths.com/support/installation](http://mtibaths.com/support/installation)  
for all the information necessary to install and operate the tub.

MTI's Customer Service Department is available Monday-Friday 8am-6pm EST at 800-783-8827 or [service@mtibaths.com](mailto:service@mtibaths.com) to answer any questions pertaining to ordering or installation.

CSA # MTDS-239A  
Effective 110719

©2019 by MTI Baths, Inc. Modification Rights Reserved.

