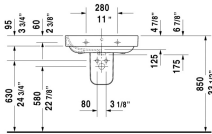
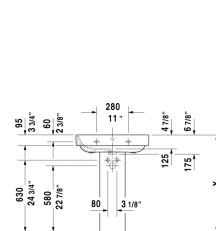
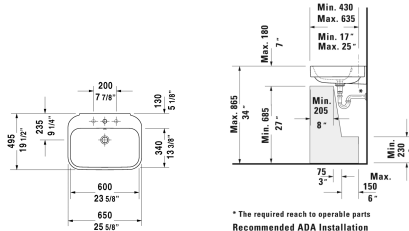


# Happy D.2 Washbasin # 2316650000 / 2316650030

| < 25 5/8" Inch > |



\* The required reach to operable parts  
Recommended ADA Installation

Washbasin	Dimension	Weight	Order number
with overflow, with faucet deck, overflow clip Chrome included, underside fully glazed, hardware included, wall-mounted, 25 5/8" Inch			
<b>Colors</b>			
00 White			
<b>Variant</b>			
●	25 5/8" x 19 1/2" Inch	45.9 lb	2316650000
●●●	25 5/8" x 19 1/2" Inch	45.9 lb	2316650030
<b>Infobox</b>			
Washbasin is not ADA compliant in combination with pedestal, siphon cover or metal console			
<b>Suitable products</b>			
Siphon cover for # 231680, 231665, 231660,			085828
Pedestal for # 231680, 231665, 231660,			085827

All drawings contain the necessary measurements which are subject to standard tolerances. They are stated in inch & mm and are non-binding. Exact measurements, in particular for customized installation scenarios, can only be taken from the finished ceramic piece.