

20 705 892 Product version from 4/1/2024



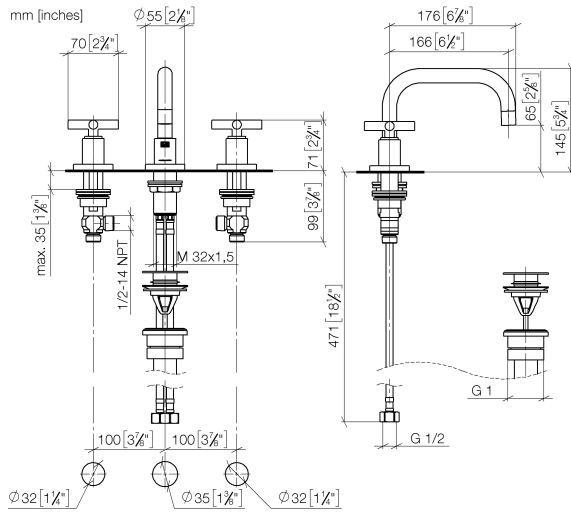
- 6-1/2" Projection
- US drain with overflow
- Swiveling spout 360°
- Round aerated stream
- Total height 5-3/4"
- Height to aerator/spout outlet 2-1/2"
- Valve hole diameter 1-1/4"
- Spout hole diameter 1-3/8"
- Flange diameter 2-1/8"
- 2x 3/8" flexible supply lines
- Water flow rate limited to max. 1.2 gpm
- lead-free
- This product can help a building meet the requirements of Green Building Rating Systems, e.g. LEED®, BREEAM®, DGNB

Suitable only for basins with overflow.

(ADA)

	Platinum	20 705 892-08 0010
	Chrome	20 705 892-00 0010
	Brushed Platinum	20 705 892-06 0010
	Dark Chrome	20 705 892-19 0010
	Brushed Durabronze (23kt Gold)	20 705 892-28 0010
	Matte Black	20 705 892-33 0010
	Brushed Dark Brass (PVD)	20 705 892-39 0010
	Brushed Bronze (PVD)	20 705 892-42 0010
	Brushed Champagne (22kt Gold)	20 705 892-46 0010
	Champagne (22kt Gold)	20 705 892-47 0010
	Brushed Chrome	20 705 892-93 0010
	Brushed Dark Platinum	20 705 892-99 0010

20 705 892 Product version from 4/1/2024



Codes & Standards

ADA	ASME A112.18.1	California Energy Commission (CEC)	cUPC
EPA WaterSense	NSF372	NSF61	WaterSense

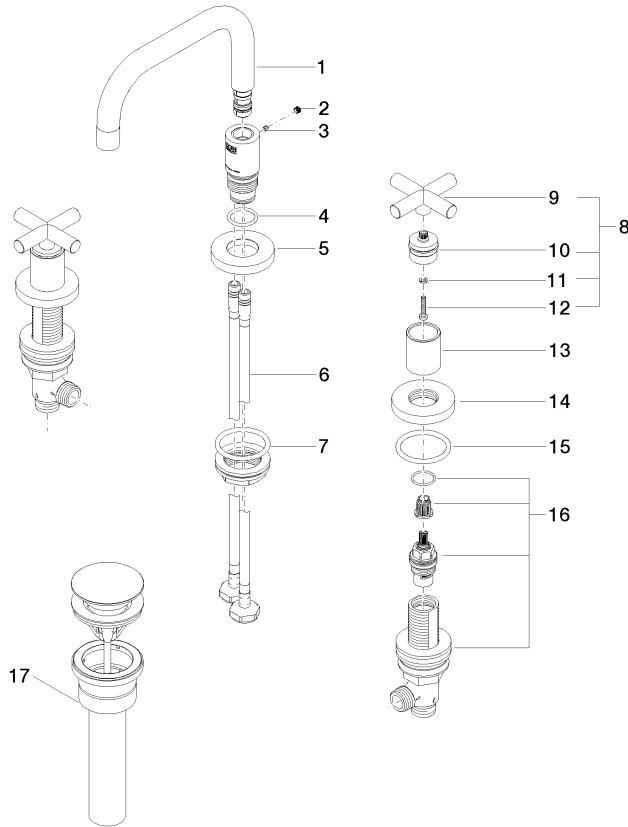


Certificates and sustainability

IAPMO_N-4	IAPMO_8834	IAPMO_4976	IAPMO_6
-----------	------------	------------	---------

20 705 892 Product version from 4/1/2024

Parts for other finishes can be found here: [Chrome](#)



Spare parts list

Number	Item Number	Designation	Number of units	Lead time
	13 09 21 02 140-08	sleeve	2.00	40
	6 04 30 04 019 00 90	hose	2.00	2
	17 10 125 970-08 0010	Umbrella drain 1 1/4" - Platinum	1.00	40
	5 09 28 10 140-08	ring	1.00	40
	14 09 27 89 105-08	rosette	2.00	40
	3 09 31 11 099 90	pin	1.00	2
	16 90 17 11 040 51 90	side panel	2.00	2
	4 09 14 10 015 90	seal	1.00	2
	7 04 23 10 009 02 90	fixing set	1.00	2
	10 90 12 12 219 00-08	base	2.00	40
	9 09 20 89 010-08	handle	2.00	60
	1 90 28 22 370 01-08	spout	1.00	40
	8 90 20 89 010 10-08	handle	2.00	40
	2 90 31 20 109 00 90	plug	1.00	2
	15 90 14 10 043 00 90	seal	2.00	2
	11 90 30 11 029 00 90	disc	2.00	2
	12 90 30 30 075 00 90	screw	2.00	2