









20 705 809 Product version from 4/1/2025

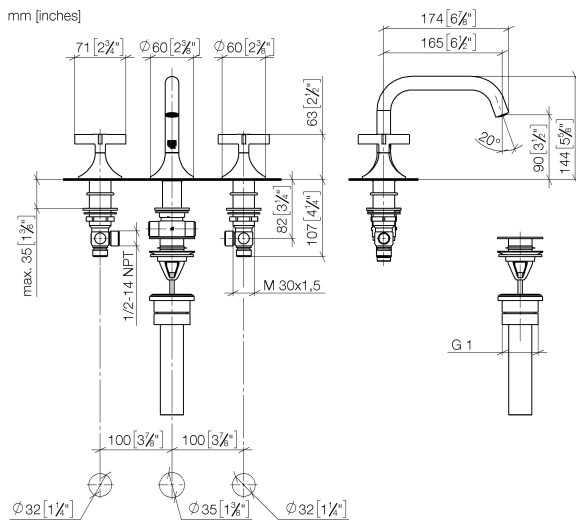


- 6-1/2" Projection
- US drain with overflow
- Swiveling spout 360°
- Round aerated stream
- Total height 5-5/8"
- Height to aerator/spout outlet 3-1/2"
- Valve hole diameter 1-1/4"
- Spout hole diameter 1-3/8"
- Flange diameter 2-3/8"
- Water flow rate limited to max. 1.2 gpm
- lead-free
- This product can help a building meet the requirements of Green Building Rating Systems, e.g. LEED®, BREEAM®, DGNB

Suitable only for basins with overflow.

| | | |
|---|--------------------------------|--------------------|
|  | Platinum | 20 705 809-08 0010 |
|  | Chrome | 20 705 809-00 0010 |
|  | Brushed Platinum | 20 705 809-06 0010 |
|  | Brushed Durabronze (23kt Gold) | 20 705 809-28 0010 |
|  | Brushed Dark Brass (PVD) | 20 705 809-39 0010 |
|  | Brushed Bronze (PVD) | 20 705 809-42 0010 |
|  | Brushed Champagne (22kt Gold) | 20 705 809-46 0010 |
|  | Champagne (22kt Gold) | 20 705 809-47 0010 |
|  | Brushed Dark Platinum | 20 705 809-99 0010 |

20 705 809 Product version from 4/1/2025



Codes & Standards

| | | | |
|----------------|------------------------------------|------------|----------------|
| ASME A112.18.1 | California Energy Commission (CEC) | cUPC | EPA WaterSense |
| NSF372 | NSF61 | WaterSense | |

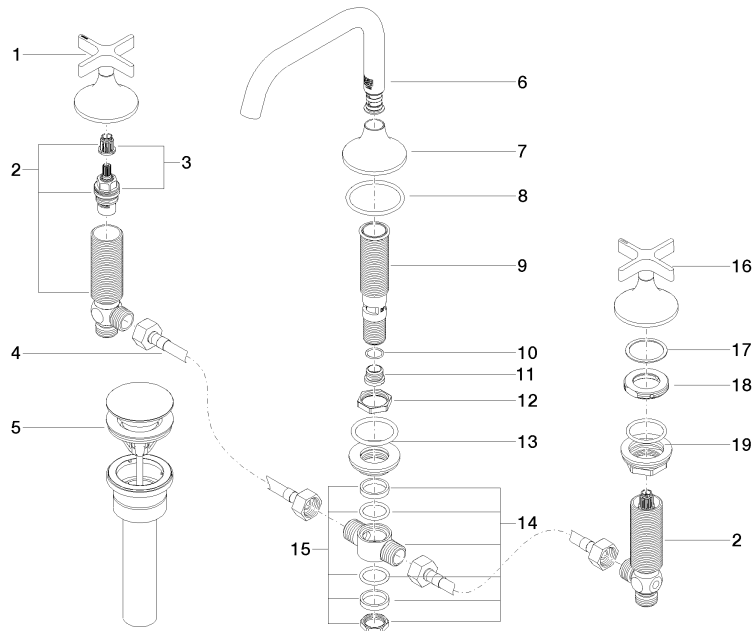


Certificates and sustainability

| | | | |
|------------|------------|------------|--------------|
| IAPMO_6397 | IAPMO_8834 | IAPMO_4976 | IAPMO_N-4976 |
|------------|------------|------------|--------------|

20 705 809 Product version from 4/1/2025

Parts for other finishes can be found here: [Chrome](#)



Spare parts list

| Number | Item Number | Designation | Number of units | Lead time |
|--------|-----------------------|----------------------------------|-----------------|-----------|
| | 19 04 23 10 032 78 90 | fixing set | 2.00 | 2 |
| | 11 09 24 04 021 10 90 | nipple | 1.00 | 2 |
| | 7 09 27 80 011-08 | rosette | 1.00 | 40 |
| | 10 09 14 10 017 90 | seal | 1.00 | 2 |
| | 13 04 23 10 004 04 90 | fixing set | 1.00 | 2 |
| | 16 90 20 80 010 00-08 | handle (cold) | 1.00 | 40 |
| | 4 04 30 04 096 00 90 | hose | 2.00 | 2 |
| | 8 09 14 10 084 90 | seal | 1.00 | 2 |
| | 17 09 28 10 003 90 | ring | 2.00 | 2 |
| | 5 10 125 970-08 0010 | Umbrella drain 1 1/4" - Platinum | 1.00 | 40 |
| | 1 90 20 80 011 00-08 | handle (hot) | 1.00 | 40 |
| | 12 09 23 10 127 90 | nut | 1.00 | 2 |
| | 15 90 23 10 012 00 90 | gasket kit | 1.00 | 2 |
| | 6 90 28 22 369 00-08 | spout | 1.00 | 40 |
| | 3 90 90 03 151 00 90 | top | 2.00 | 2 |
| | 2 04 17 11 055 51 90 | side panel | 2.00 | 2 |
| | 9 90 30 01 033 00 90 | base | 1.00 | 2 |
| | 18 09 24 01 028 90 | ring | 2.00 | 2 |
| | 14 90 17 11 020 10 90 | distributor | 1.00 | 2 |