

JEEVES WET RATED KIT

INSTALLATION GUIDE



INCLUDED COMPONENTS



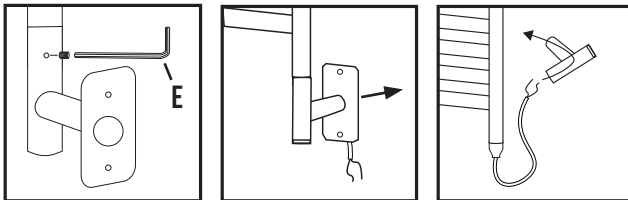
NOTE: WATERPROOF WIRE CONNECTORS ARE RECOMMENDED BUT NOT INCLUDED

WARRANTY

A ten-year limited warranty on the unit and two years on the element will apply with proof of purchase if all Terms and Conditions of Sale are met, and Installation Instructions are adhered to.

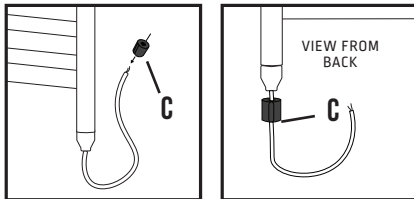
This is a guide to using the components supplied with the Jeeves Wet rated kit in order to install the heated towel rack in a wet room location.

NOTE: This is an addendum to the standard Jeeves Installation Instructions provided with the heated towel rack.



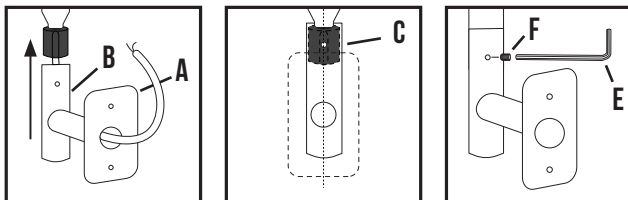
STEP 1

Untighten and remove the set screw from the element cover of your Jeeves Heated Towel Rack using the Allen Key Provided. Remove the L-Tube by unthreading the cord through until it is free.



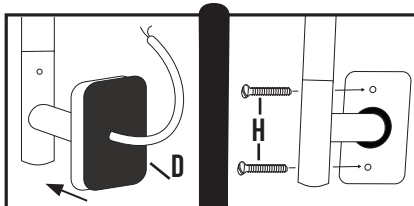
STEP 2

Thread the cord through the black sleeve [part C] from the wet rated kit, until the sleeve is firmly against the hexagonal nut at the base of the heated towel rack. Rotate the sleeve until the groove is at the back of the heated towel rack i.e. the side that will be facing the wall once the unit has been installed.



STEP 3

Thread the cord through the new L-Tube [Part B] included with the Wet Rated Kit and slide the element cover over the black sleeve [part C]. Align the element cover so that the set screw hole is in line with the groove on the black sleeve. Fit and tighten the set screw. Thread the Cover Plate with Grommet [Part A] onto the L-Tube with the rubber grommet facing away from the wall.



STEP 4

Thread the cord through the center of the Black Cover Gasket [Part D] so it is flush with the back of the Cover Plate with Grommet [part A]. Continue the standard Jeeves Heated Towel Rack installation and finish by securing the Cover Plate with the two Cover Plate Screws [part H].

CONTINUE WITH THE STANDARD JEEVES INSTALLATION BUT NOTE:

| | | |
|--|--|--|
| Use caulking around cover if not mounted to a U.L. -Listed wet rated box location. | Seal all openings to comply with wet location installation requirements. | Install with a GFCI circuit breaker and in accordance with local electrical codes. |
|--|--|--|