

Lavatory "P" Trap

3014



Features

- Solid brass construction
- "P" Trap - 1-1/2" x 1-1/4", 17 gauge
- "P" Trap - Fits 1-1/2" or 1-1/4" drain tailpiece
- "P" Trap - 8-1/2" tube bend CL to wall length
- High Box Wall Flange - deep design for 1-1/4" O.D. tube interface

Codes / Standards Compliance

Meets or exceeds the following at date of manufacture:

- ASME A112.18.2/CSA B125.2
- IAMPO/cUPC
- IPC
- All applicable US Federal and State material regulations



Colors / Finishes

- 10B: Oil Rubbed Bronze
- 15: Polished Nickel
- 15S: Satin Nickel - PVD
- 26: Polished Chrome
- Other: Refer to the Newport Brass catalog for additional color/finish options.

Specified Model

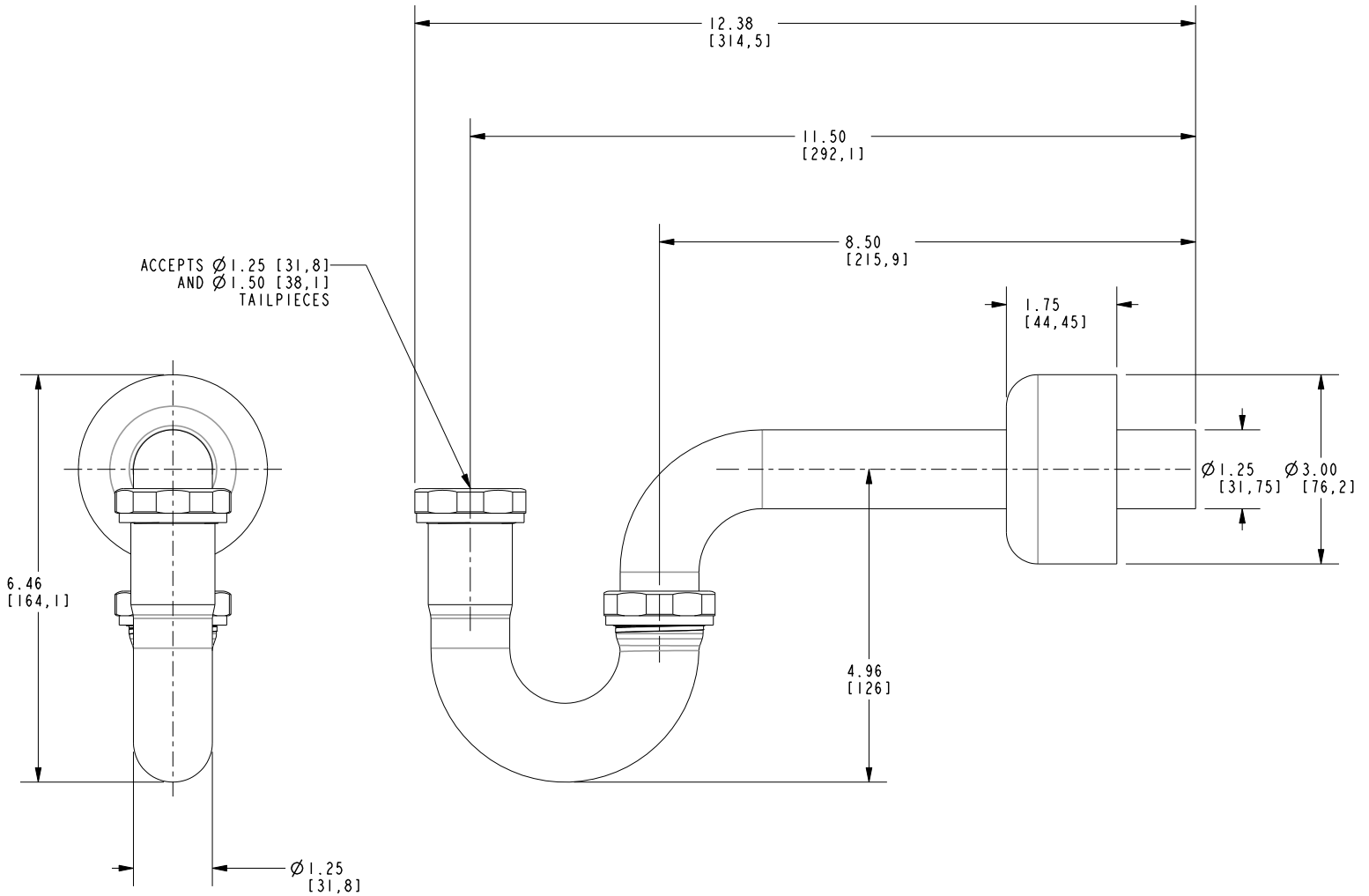
Model	Description	Colors Finishes
3014	Tank & Lavatory "P" Trap	<input type="checkbox"/> 10B <input type="checkbox"/> 15 <input type="checkbox"/> 15S <input type="checkbox"/> 26 <input type="checkbox"/> Other

Product Specification Add "Color / Finish" suffix to Model number, below.

"P" Trap Kit shall be of solid brass construction. Kit shall include "P" trap having 17 gauge tubing at 1-1/2" x 1-1/4" diameters. Kit shall include "P" trap design that fits both a 1-1/2" or 1-1/4" drain tailpiece. Kit shall include a "P" trap having a tube bend CL to wall length of 8-1/2". Kit shall include a high box wall flange for interfacing the 1-1/4" O.D. tubing of the "P" trap. "P" Trap Kit shall be Newport Brass Model 3014/____.

3014

Product Dimensions are provided for reference only. For specific product installation guidelines, please reference the Installation Instructions of the product being installed.



Brasstech Tank & Lavatory "P" Trap 3014