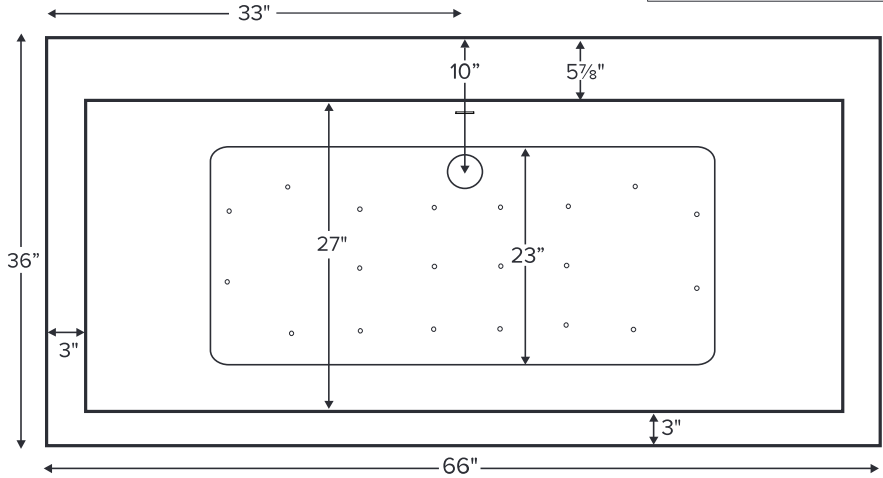


Kahlo 4



Features integrated overflow.

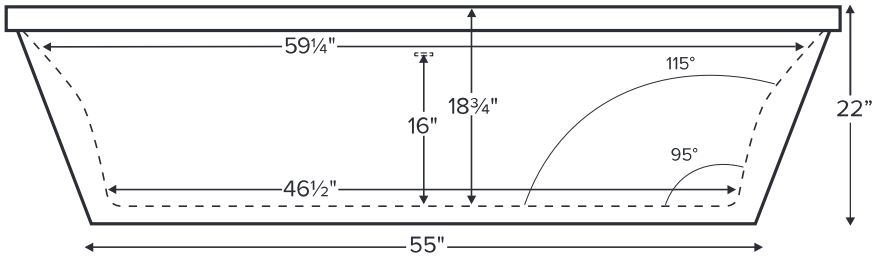
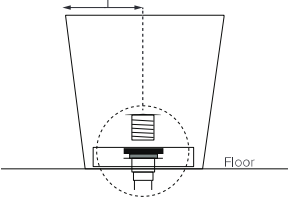
|                                                                                              |                          |
|----------------------------------------------------------------------------------------------|--------------------------|
| MODEL 143                                                                                    |                          |
| 66" x 36" x 22"                                                                              |                          |
| FREESTANDING<br>85 gal to overflow                                                           |                          |
| Acrylic CXL™                                                                                 | DoloMatte™               |
| 165 lbs / 75 kg                                                                              | <SOAKER> 186 lbs / 84 kg |
| Filling this tub to the maximum may require an above average size or dedicated water heater. |                          |



Drain Rough-In Measurement



Kahlo 4 features a flat deck on the drain side for mounting faucetry.  
Shown with Air Massage Package.



ELECTRICAL COMPONENTS & SPECIFICATIONS

| Hydrotherapy Package | Components Included          | 110V GFCI |
|----------------------|------------------------------|-----------|
| Air Massage          | heated blower                | 1-15 amp  |
| Air Massage Elite    | heated blower, chromatherapy | 1-15 amp  |

Electrical requirements may change with the addition of optional therapy components.  
See specific option details or installation information.  
CSA Certified C/US; ANSI Z124.1 and ANSI 112.19.7

IMPORTANT ORDERING & INSTALLATION INFORMATION:

- Before ordering or installing, please consider future access to equipment.
- This tub comes equipped with an access panel to facilitate installation of valves and toe tap drain.
- Tub features slotted integrated overflow with toe tap drain.
- Air baths require job site preparations for remote mounting the blower and required check valve. Check valve must be installed higher than the rim of the tub.
- Hydrotherapy equipment may ship loose for remote installation depending on tub model. See package content on the following page for details.
- Radiance placed on floor locations will affect placement of air jets.
- All tubs are in accordance with CSA B45.5/IAPMO Z124 standard and compliant with ASTM C 1028-07 coefficient of friction. Dolomatte meets ANSI A137.1/A326.3 coefficient of friction and AS HB198:2014 pendulum slip resistance testing.

• Before discarding tub crate, check for accessories that may be packaged inside.  
• All product measurements are ±1/2".  
• Specifications and configurations are subject to change without notice.  
• Measurements herein supersede all others published prior to publication date below.

See the Installation & Operation Manual for more details.  
MTI's Customer Service: Monday-Friday 8am-6pm EST  
800-783-8827 or service@mtibaths.com

