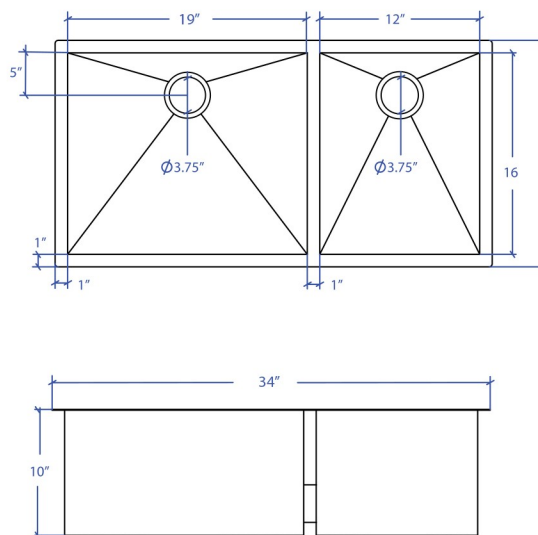


FLATIRON MUD-653SB



*Custom ADA compliant versions are available



• FEATURES

- 16-gauge type 304 stainless steel
- 90° zero radius design

• TECHNICAL INFORMATION

- External dimension: 34"Lx18.5"Wx10"D
- Basin dimensions:
Left: 19"Lx16.5"Wx10"D
Right: 12"Lx16.5"Wx10"D

• FINISHES

- Satin Brushed stainless steel

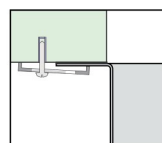
• INSTALLATION OPTIONS

- Under-mount

• MINIMUM CABINET SIZE (I.D.)

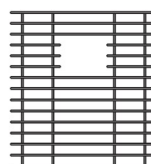
- Under-mount 37"

• DUAL-MOUNT INSTALLATION

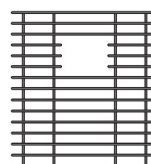


Under-mount

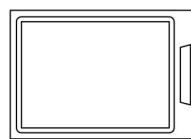
• ACCESSORY OPTIONS



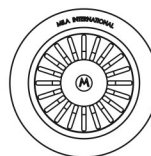
MBG-6506SB
Basin Grid



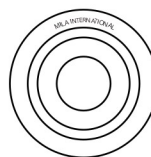
MBG-6501SB
Basin Grid



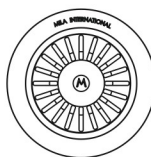
MCB-651BB
Cutting Board



MKD-101SB
Strainer



MDC-101SB
Disposal Collar



MDC-102SB
Disposal Collar

PROJECT INFORMATION			
Project			
Date	/ /	QTY	
Specifier			
Contact			
Note			

UNDER-MOUNT