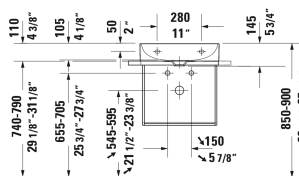
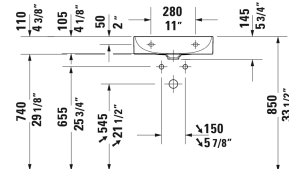
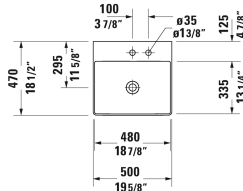
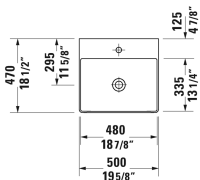
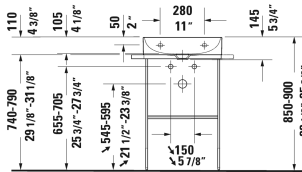


DuraSquare Furniture washbasin # 2353500040 / 2353500041 / 2353500044 / 2353500070

| < 19 5/8" Inch > |



Furniture washbasin	Dimension	Weight	Order number
without overflow, with faucet deck, ceramic covered slotted waste included, underside fully glazed, hardware included, wall-mounted, cUPC® listed*, 19 5/8" Inch			
Colors			
00 White			
Variant			
● ●	19 5/8" x 18 1/2" Inch	26.2 lb	2353500040
●	19 5/8" x 18 1/2" Inch	26.2 lb	2353500041
● ● ●	19 5/8" x 18 1/2" Inch	26.2 lb	2353500044
☒	19 5/8" x 18 1/2" Inch	26.2 lb	2353500070
Infobox			
Made of DuraCeram, * Complies with following standards: ASME A112.19.2/CSA B45.1			
Sanitary ceramics with the special WonderGliss surface finish will remain clean and attractive-looking for a long time to come. When ordering WonderGliss please add a "1" as eleventh digit to the model number.			
Towel rail square tube 1/2", Chrome, for washbasin # 045450, 235050, 235350	17 3/4" Inch	1.1 lb	003029
Design Siphon		3.3 lb	005036
Suitable products			

**DuraSquare Furniture washbasin # 2353500040 / 2353500041
/ 2353500044 / 2353500070**

|< 19 5/8" Inch >|

Vanity unit wall-mounted 1 pull-out compartment, for DuraSquare # 235350, 19 1/8" x 18 1/8" Inch	19 1/8" x 18 1/8" Inch	XS4059
Vanity unit wall-mounted 2 drawers, upper drawer including cut-out for siphon and siphon cover, for DuraSquare # 235350, 19 1/8" x 18 1/8" Inch	19 1/8" x 18 1/8" Inch	XS4160
Vanity unit floorstanding 2 pull-out compartments, integrated legs with height adjustment, for DuraSquare # 235350, 19 1/8" x 18 1/8" Inch	19 1/8" x 18 1/8" Inch	XS4439
Metal console floorstanding ** height adjustable +2", hardware included, for washbasin # 235350, towel rail right or left, reversible, 22 1/4" x 17 3/4" Inch	22 1/4" x 17 3/4" Inch	003115
Metal console wall-mounted ** hardware included, for washbasin # 235350, towel rail right or left, reversible, 22 1/4" x 17 3/4" Inch	22 1/4" x 17 3/4" Inch	003116
Glass inserts safety glass, 18 1/2" x 15" Inch	18 1/2" x 15" Inch	009969

All drawings contain the necessary measurements which are subject to standard tolerances. They are stated in inch & mm and are non-binding. Exact measurements, in particular for customized installation scenarios, can only be taken from the finished ceramic piece.