



TO-V3002-7, TO-V3002-9, TO-V3002X-7,
TO-V3002X-9, TO-V3802-7, TO-V3802-9,
TO-V3802X-7, TO-V3802X-9, TO-V8002-7,
TO-V8002-9, TO-V8002W-7, & TO-V8002W-9

Two Handle Lavatory Wall Faucet Installation Instructions

CALIFORNIA FAUCETS RECOMMENDS THAT ALL PLUMBING PRODUCTS BE INSTALLED BY A LICENSED PROFESSIONAL

IMPORTANT: Read all instructions prior to installation and provide copy of instructions to consumer.

Operating Specifications:

Recommended Supply Pressure: 20 to 70 psi [1.4 to 4.8 bar] *†

Maximum Flow Rate: 1.2 gpm [4.5 L/min]

* Operating pressures between hot and cold supplies should vary no more than 30 psi [2.1 bar].

† If water pressure exceeds 70 psi [4.8 bar], install a Pressure-Reducing Valve (PRV).

I INSTALLING SPOUT

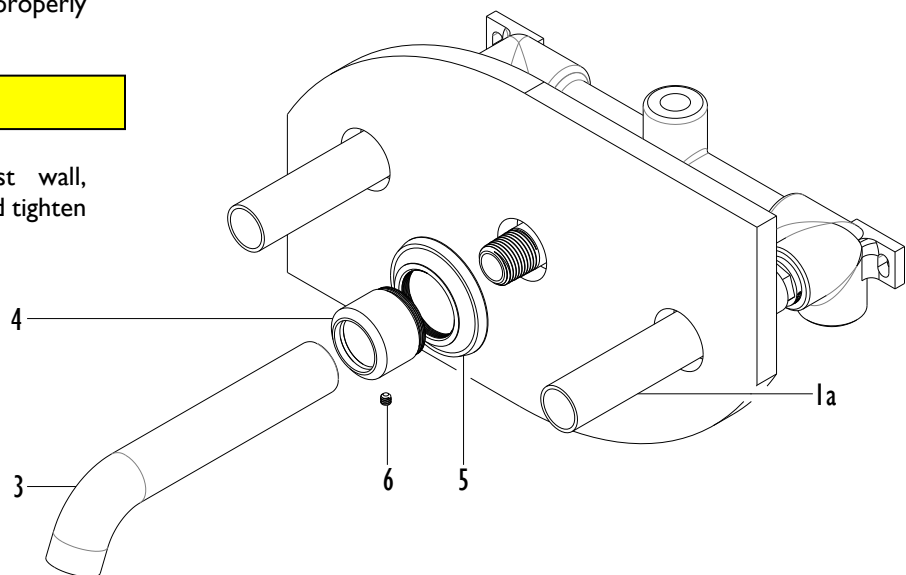
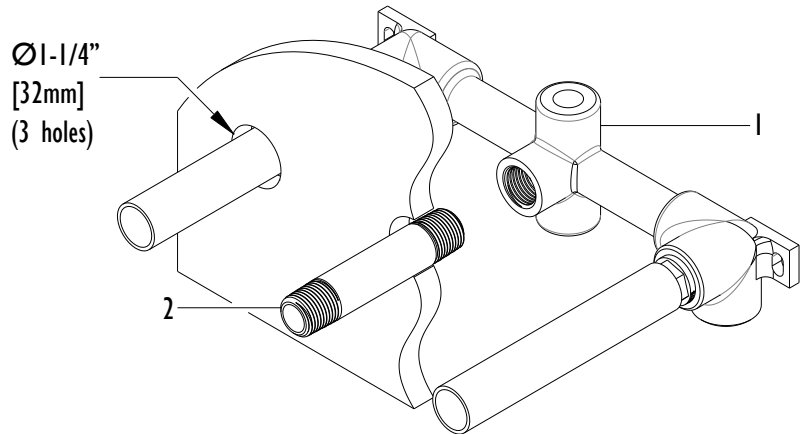
- Prior to installing faucet trim in-wall vessel rough VALVE (1), **VL-R**, must be properly installed and wall surface must be completely finished

NOTE: Recommended through-hole size shall be $\varnothing 1-1/4"$ [32mm]

- Apply thread sealant to both threaded ends of NPT NIPPLE (2), not supplied, and tighten into center outlet of VALVE (1)
- Tighten spout BASE (4) onto spout RING (5), and slide onto SPOUT (3)
- Tighten SPOUT (3) onto NPT NIPPLE (2)
- If SPOUT (3) is not properly aligned when fully tightened, turn counter-clockwise till properly aligned

IMPORTANT: Do not overtighten SPOUT (3)

- Push spout RING (5) firmly against wall, positioning setscrew hole on bottom, and tighten SETSCREW (6)



2

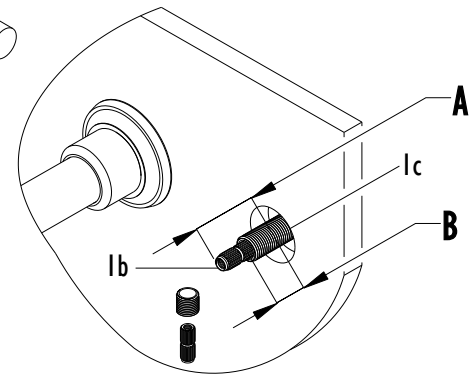
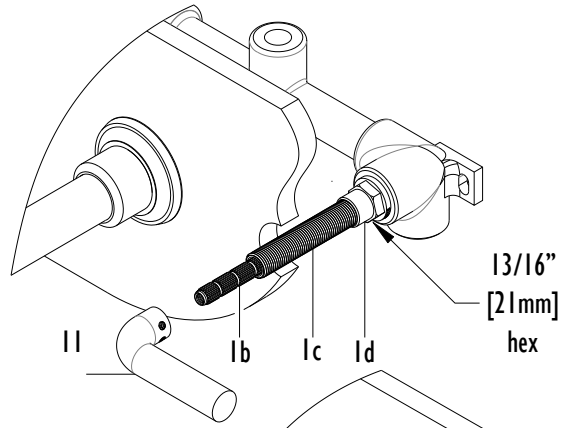
ALIGN & TRIM VALVE STEM

- Remove MUDGUARD (1a) from VALVE (1)
- To obtain proper HANDLE (11) alignment it may be necessary to re-align cartridge STEM (1b); to align STEM (1b), slightly loosen the cartridge NUT (1d), place HANDLE (11) on STEM (1b) and **TIGHTEN** in CW direction until desired alignment is achieved; retighten cartridge NUT (1d) to torque setting of 14 ft-lbs [19 Nm].

WARNING: Cartridge NUT (1d) **MUST** be properly torqued to prevent possible failure and/or water damage

- Using a marker indicate a distance from finished wall on ALL-THREAD (1c) according to table below
- Unscrew ALL-THREAD (1c) from valve STEM (1b)
- Cut STEM (1b) from finished wall surface according to table below
- Cut off excess ALL-THREAD (1c) at indicated mark and reattach ALL-THREAD (1c) onto valve STEM (1b) – repeat on other side

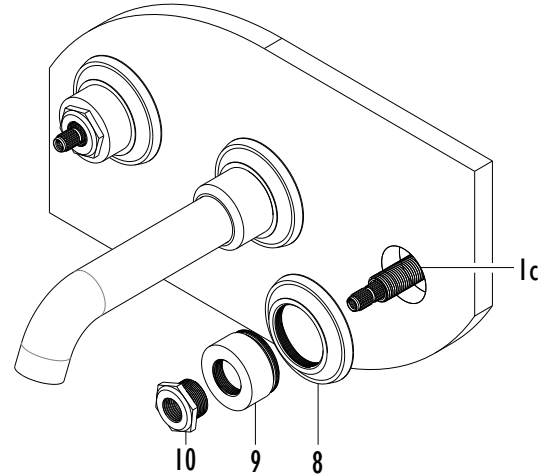
Series	A	B
30/30X	1-3/4" [44mm]	13/16" [21mm]
38/38X	1-1/16" [27mm]	1/4" [6mm]
80	1-9/16" [40mm]	13/16" [21mm]
80V	1-11/16" [43mm]	13/16" [21mm]



3

INSTALLING ESCUTCHEON

- Tighten handle RING (8) and decorative NUT (10) onto handle RISER (9)
- Secure escutcheon onto wall by tightening decorative NUT (10) onto ALL-THREAD (1c)



4

INSTALLING HANDLE

- Loosen both SETSCREW (11b)
- Slide HANDLE (11) down onto and engage valve STEM (1b) leaving a space of 1/32" [0.8mm] between handle and decorative NUT (10)
- Tighten both SETSCREW (11b)
- Turn on water supply and check for leaks

