

BUSTER+PUNCH

LONDON

[product.]

ELECTRICITY / 1G-4G PLATE / METAL

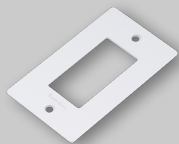
[with. **INFILLS.**]

[detail. **COIN SCREW.**]

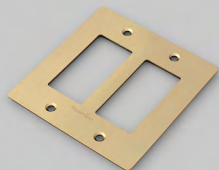
[born. **LONDON.**]

[region. **NORTH AMERICA.**]

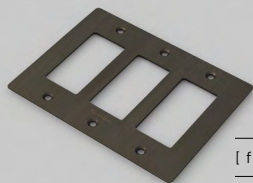
Decorative cover plate sets in a variety of quality finishes, complete with flush fitting infills. Designed to be completed with range of module inserts to suit a broad spectrum of requirements for lighting control, power supply and device charging. Always finish with our signature details kit & coin screws.



[finish. **WHITE.**]



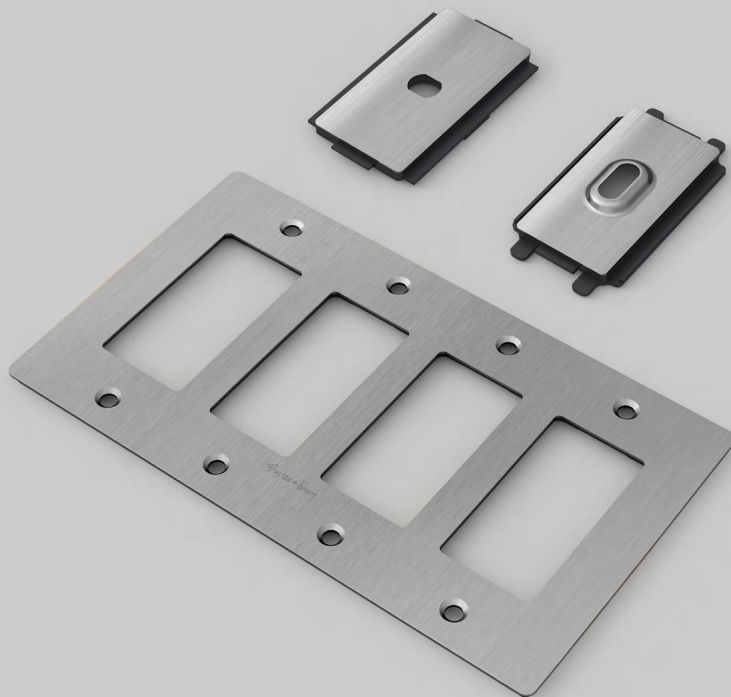
[finish. **BRASS.**]



[finish. **SMOKED BRONZE.**]



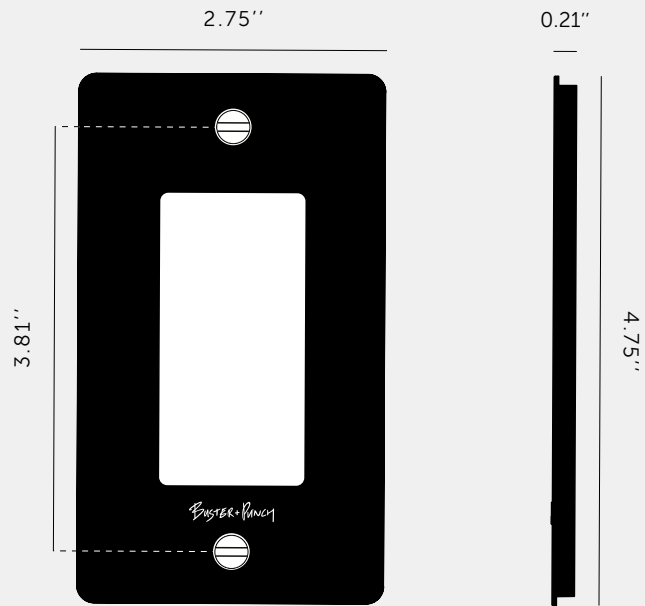
[finish. **BLACK.**]



[finish. **STEEL.**]

[type. **1G PLATE / METAL.**]

[info. **MEASUREMENTS.**]



[info. **SPECIFICATIONS.**]

Our Metal Electricity range has solid stainless steel plates, in our signature white, steel, brass, smoked bronze and black finishes.

Style: 1G metal plate + infills.

For use with class 1 modules only / Must be earthed.






Recommended Back Box:

Standard flush mounted 1G back box. See dimensions of chosen module(s) for required back box depth.

[info. **FINISH & SKU NUMBERS.**]

[finish.]

[US.]

 White	NPL-023061
 Steel	NPL-07292
 Brass	NPL-05289
 Smoked Bronze	NPL-09291
 Black	NPL-053060

[info. **CARE INSTRUCTIONS.**]

Wipe with damp cloth with no loose hairs, avoid using any chemicals. All finishes are prone to aging.

[info. **CERTIFICATION.**]

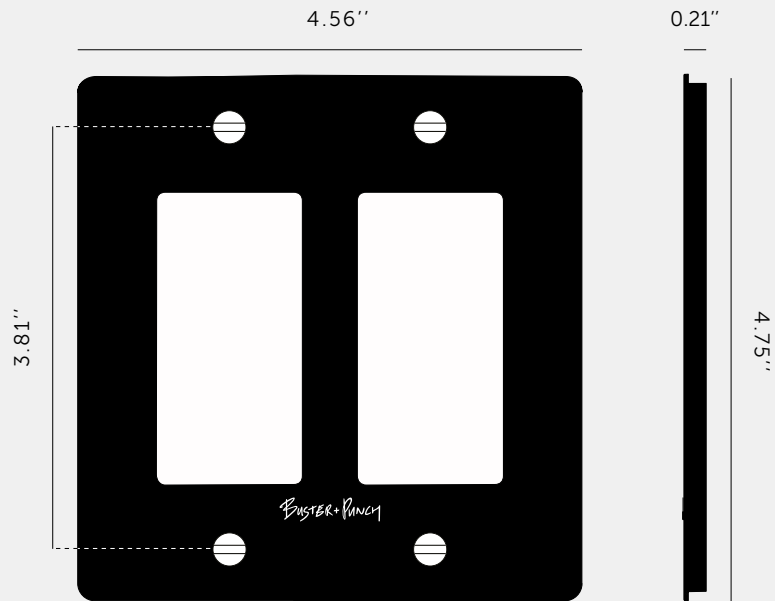
Plates: Underwriters Laboratories cULus listed for use throughout North America: E507052.

[please. **NOTE.**]

DISCLAIMER: Always consult a trade professional when installing this plate. Buster + Punch is not responsible for the usage or feasibility of installation requirements. This product is not suitable for damp or wet environments.

[type. **2G PLATE / METAL.**]

[info. **MEASUREMENTS.**]



[info. **SPECIFICATIONS.**]

Our Metal Electricity range has solid stainless steel plates, in our signature white, steel, brass, smoked bronze and black finishes.

Style: 2G metal plate + infills.

For use with class 1 modules only / Must be earthed.

Recommended back box:

Standard flush mounted 2G back box. See dimensions of chosen module(s) for required back box depth.

[info. **FINISH & SKU NUMBERS.**]

[finish.]

[US.]

White	NPL-143064
Steel	NPL-07297
Brass	NPL-05294
Smoked Bronze	NPL-09296
Black	NPL-023063

[info. **CARE INSTRUCTIONS.**]

Wipe with damp cloth with no loose hairs, avoid using any chemicals. All finishes are prone to aging.

[info. **CERTIFICATION.**]

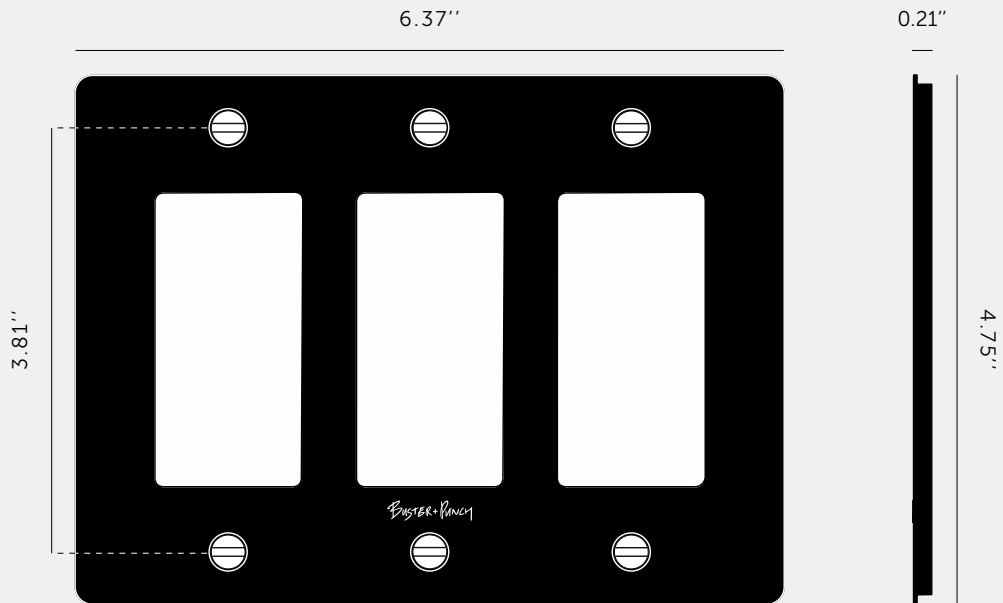
Plates: Underwriters Laboratories cULus listed for use throughout North America: E507052.

[please. **NOTE.**]

DISCLAIMER: Always consult a trade professional when installing this plate. Buster + Punch is not responsible for the usage or feasibility of installation requirements. This product is not suitable for damp or wet environments.

[type. **3G PLATE / METAL.**]

[info. **MEASUREMENTS.**]



[info. **SPECIFICATIONS.**]

Our Metal Electricity range has solid stainless steel plates, in our signature white, steel, brass, smoked bronze and black finishes.

Style: 3G metal plate + infills.

For use with class 1 modules only / Must be earthed

Recommended back box:

Standard flush mounted 3G back box. See dimensions of chosen module(s) for required back box depth.

[info. **FINISH & SKU NUMBERS.**]

[finish.]

[US.]

White	NPL-143067
Steel	NPL-07302
Brass	NPL-05299
Smoked Bronze	NPL-09301
Black	NPL-023066

[info. **CARE INSTRUCTIONS.**]

Wipe with damp cloth with no loose hairs, avoid using any chemicals. All finishes are prone to aging.

[info. **CERTIFICATION.**]

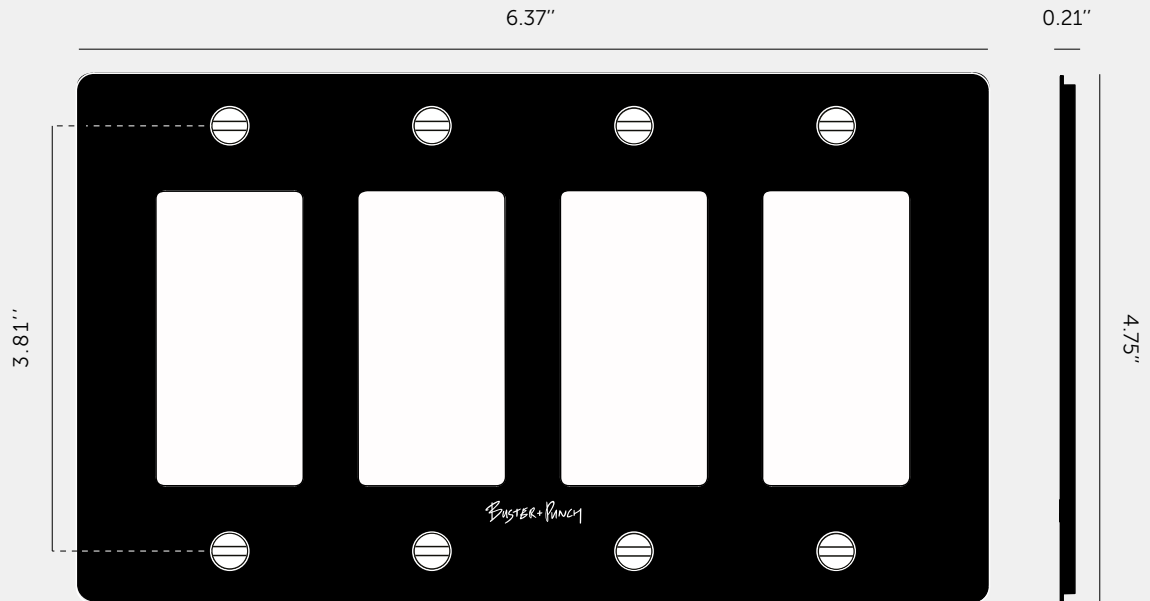
Plates: Underwriters Laboratories cULus listed for use throughout North America: E507052

[please. **NOTE.**]

DISCLAIMER: Always consult a trade professional when installing this plate. Buster + Punch is not responsible for the usage or feasibility of installation requirements. This product is not suitable for damp or wet environments.

[type. **4G PLATE / METAL.**]

[info. **MEASUREMENTS.**]



[info. **SPECIFICATIONS.**]

Our Metal Electricity range has solid stainless steel plates, in our signature white, steel, brass, smoked bronze and black finishes.

Style: 4G metal plate + infills.

For use with class 1 modules only / Must be earthed.

Recommended back box:

Standard flush mounted 4G back box. See dimensions of chosen module(s) for required back box depth.

[info. **FINISH & SKU NUMBERS.**]

[finish.]

[US.]

● White	NPL-143070
● Steel	NPL-07307
● Brass	NPL-05304
● Smoked Bronze	NPL-09306
● Black	NPL-023069

[info. **CARE INSTRUCTIONS.**]

Wipe with damp cloth with no loose hairs, avoid using any chemicals. All finishes are prone to aging.

[info. **CERTIFICATION.**]

Plates: Underwriters Laboratories cULus listed for use throughout North America: E507052.

[please. **NOTE.**]

DISCLAIMER: Always consult a trade professional when installing this plate. Buster + Punch is not responsible for the usage or feasibility of installation requirements. This product is not suitable for damp or wet environments.



SKU: NDM-024061

Buster + Punch

Specifications Currently Unavailable



SKU: Cross Dimmer Detail Kit

Buster + Punch

Specifications Currently Unavailable