



PRIMUS HI Flush Kit Sensor
A027

INSTALLATION INSTRUCTION

THANK YOU

Thank you for selecting an AXENT Switzerland product. To ensure proper installation, please review these instructions carefully before use. Carefully unpack and examine the toilet before installation. For any questions, contact us at 1-800-769-4857. Thank you again for choosing AXENT.

BEFORE YOU BEGIN

CAUTION!

Risk of personal injury or product damage.

Handle with care. Vitreous china can break or chip if handled carelessly.

ALL INSTALLATION PROCEDURES SHOULD COMPLY WITH APPLICABLE LOCAL PLUMBING AND BUILDING CODES.

INSTALLATION BY A PROFESSIONAL, LICENSED PLUMBER OR CONTRACTOR IS HIGHLY RECOMMENDED.



SAFETY SYMBOLS

The following symbols in the manual will highlight hazardous situations and their severities.



DANGER!

High Risk, Lethal Hazards, Severe Injuries



WARNING!

Medium Risk, Severe Injuries



CAUTION!

Low Risk, Minor Injuries



NOTE!

Damage to Property

NORMAL USAGE

This product is meant for indoors usage only.

AXENT undertakes no liability for abnormal usage.

IMPORTANT SAFEGUARDS

READ ALL INSTRUCTIONS BEFORE INSTALLATION AND USING

SAVE THESE INSTRUCTIONS

A copy of the instructions can also be downloaded from <https://axentbath.us>.

When using electrical products, especially when children are present, basic safety precautions should always be taken, including the following:



WARNING!

To reduce the risk of burns, electrocution, fire, or injury to persons

Use this product only for its intended use as described in this manual. Do not use attachments not authorized by the manufacturer.

Never drop or insert any object into any openings or hoses.

SAFETY INSTRUCTIONS

Carefully read and observe the following safety instructions!

Information for the user

Children or persons with limited physical/mental capabilities may require supervision or proper instructions/guidance prior to or during use.

Ensure that children cannot play with toilet.

Repairs must only be carried out by a person with the necessary expertise

Do not carry out modifications, tamper with, install additional equipment, or attempt to repair the toilet.

Improperly performed repairs can lead to accidents, injuries, or damage to the product.

Information on the use of batteries

Keep batteries out of the reach of small children. Batteries can be life-threatening if swallowed. If a battery has been swallowed, seek medical assistance immediately.

Do not attempt to recharge non-chargeable batteries for use with unit.

Always remove empty batteries from the remote control immediately. They may leak and cause damage.

Do not insert new and old batteries together in the remote control.

Clean the battery and contacts before inserting the battery. Make sure the batteries are oriented properly.

Remove the batteries if the remote control will not be used for an extended period of time.

Avoid malfunctions and damage to the product as a result of improper use

If toilet is moved from a cold location to a warm location, condensation may form. Leave the unit switched off for a few hours.

Do not install the toilet in rooms where the temperature will be less than 4 °C (39 °F).

Do not place open flames, candles, cigarettes, or similar objects on or by the toilet.

Do not reuse old hoses or water lines. Please use new water lines when installing.

Do not install the toilet next to items that would potentially expose the toilet to a large amount of water.

Do not climb on or stand on the product.

Do not place any heavy objects on the lid.

Do not open or close the lid or seat with force.

Do not expose the batteries to hot surfaces or direct sunlight to reduce the risk of battery leakage.

If battery acid has leaked, avoid contact with skin, eyes and mucous membranes. In case of contact with the acid, flush the affected areas with large amounts of clean water and seek medical assistance immediately.

FCC INSTRUCTIONS

Please note that changes or modifications not expressly approved by the party responsible for compliance could void the user's authority to operate the equipment.

Note: This equipment has been tested and found to comply with the limits for a Class B digital device, pursuant to part 15 of the FCC Rules. These limits are designed to provide reasonable protection against harmful interference in a residential installation. This equipment generates, uses and can radiate radio frequency energy and, if not installed and used in accordance with the instructions, may cause harmful interference to radio communications. However, there is no guarantee that interference will not occur in a particular installation.

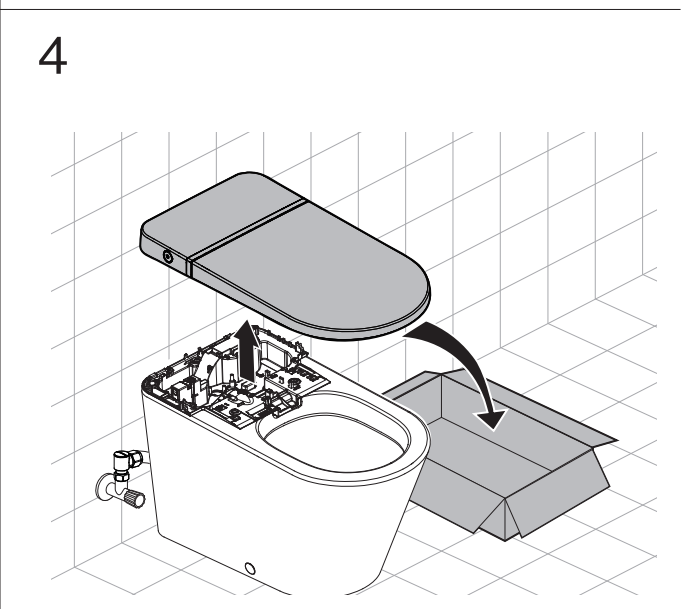
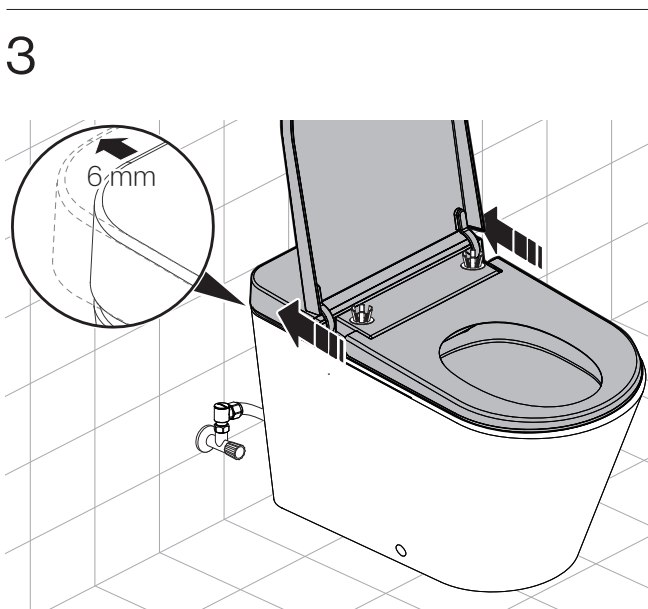
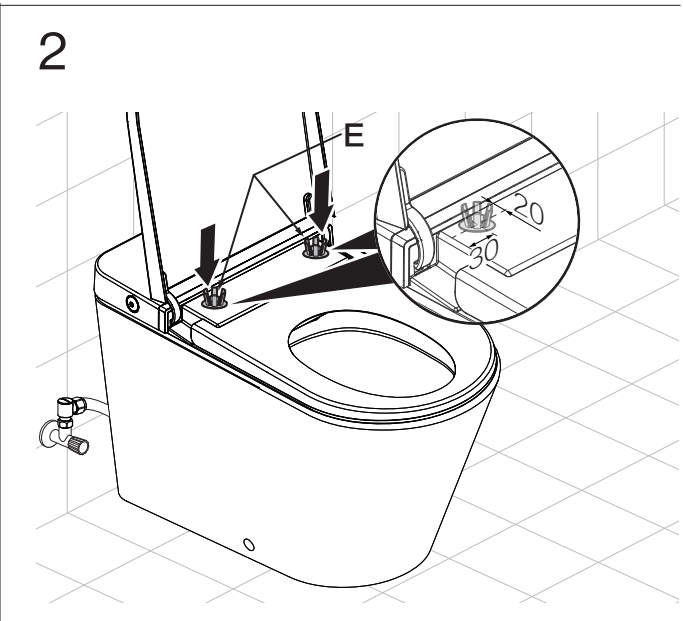
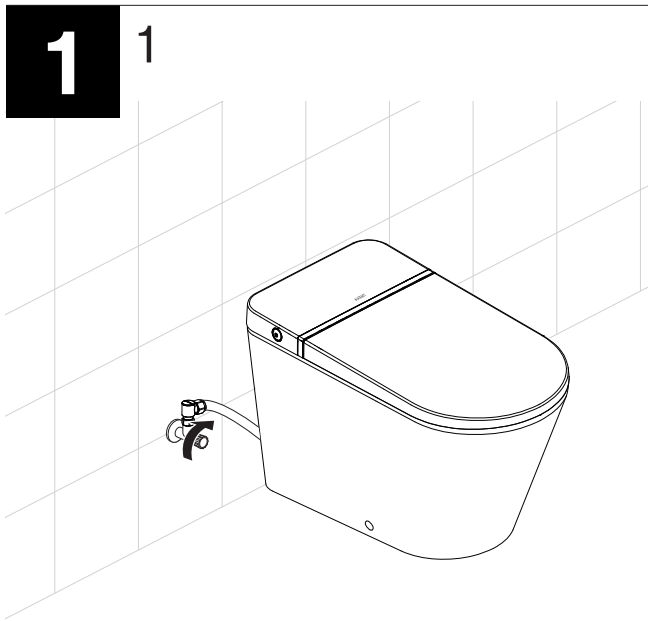
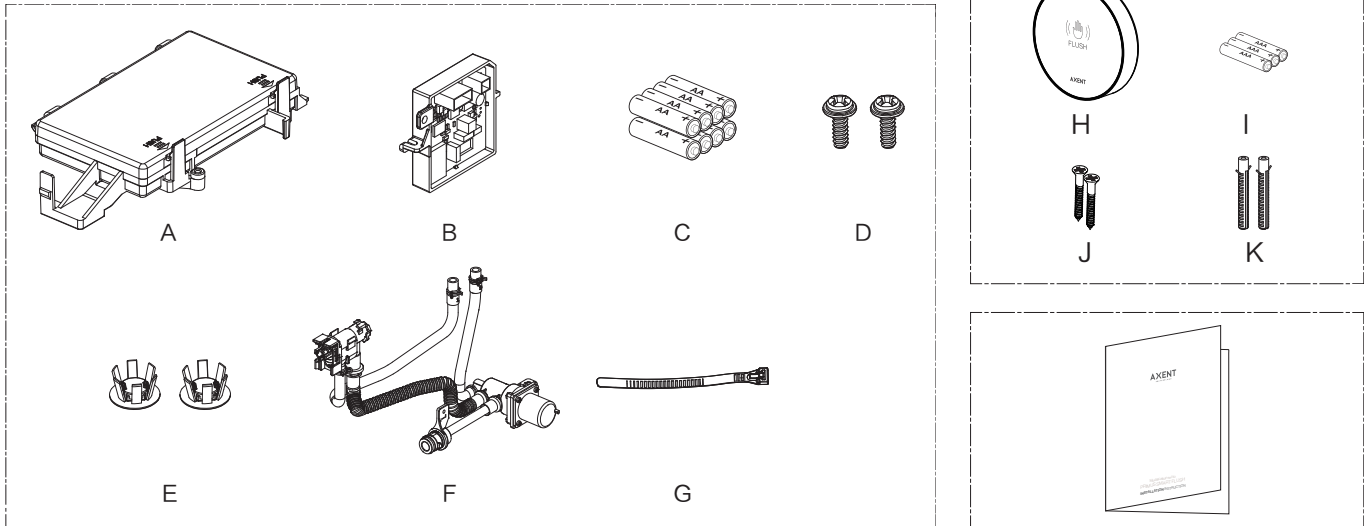
If this equipment does cause harmful interference to radio or television reception, which can be determined by turning the equipment off and on, the user is encouraged to try to correct the interference by one or more of the following measures:

- Reorient or relocate the receiving antenna.
- Increase the separation between the equipment and receiver.
- Connect the equipment into an outlet on a circuit different from that to which the receiver is connected.
- Consult the dealer or an experienced radio/TV technician for help.



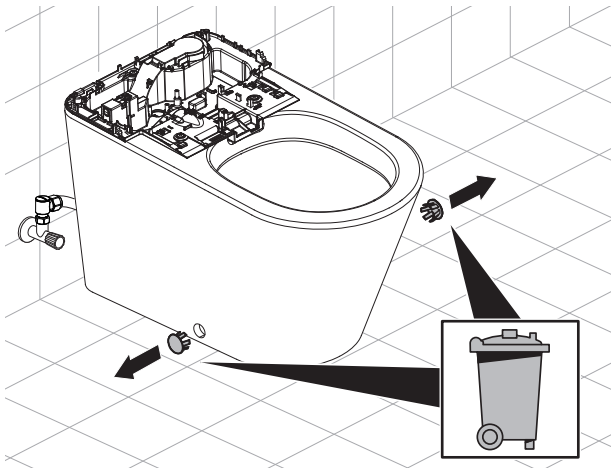
INSTALLATION

Standard Delivery Contents

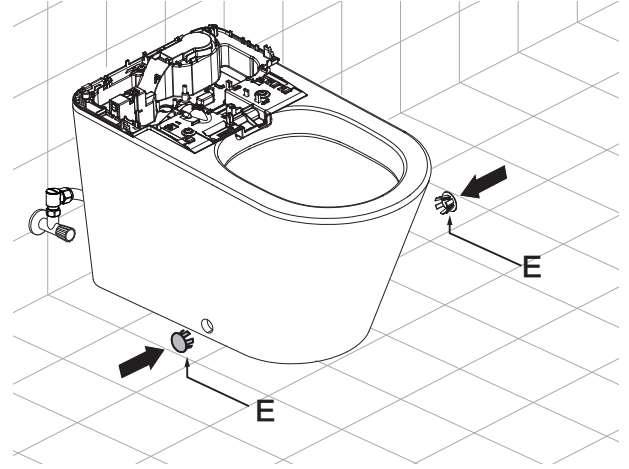


INSTALLATION

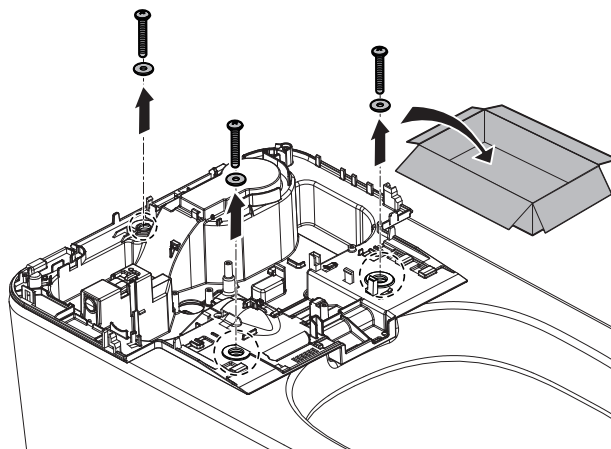
5



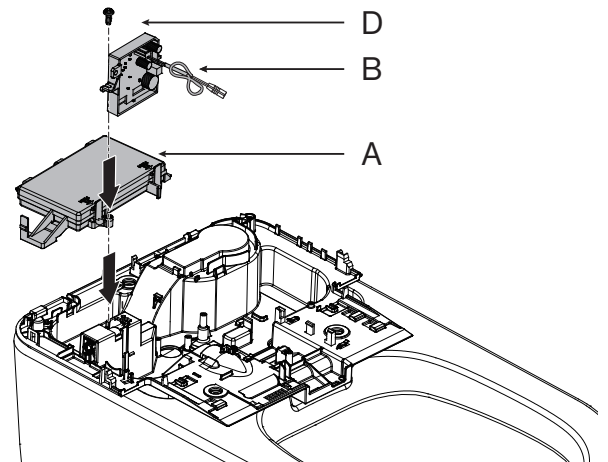
6



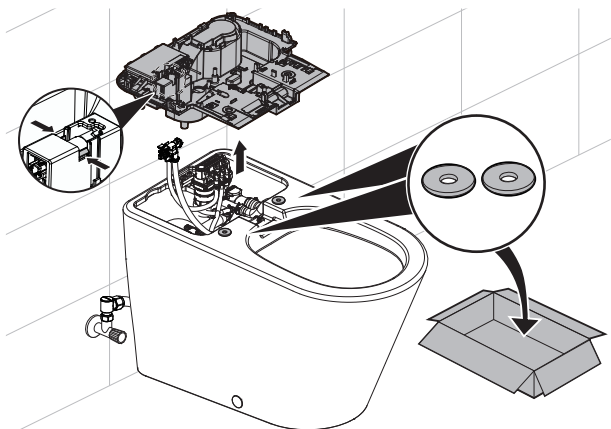
7



8



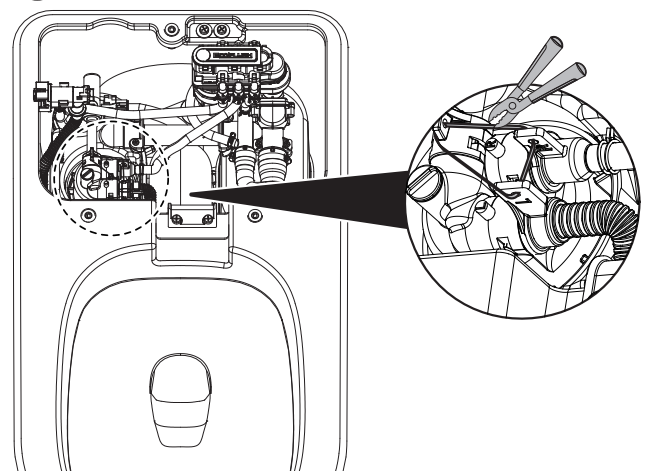
9



10

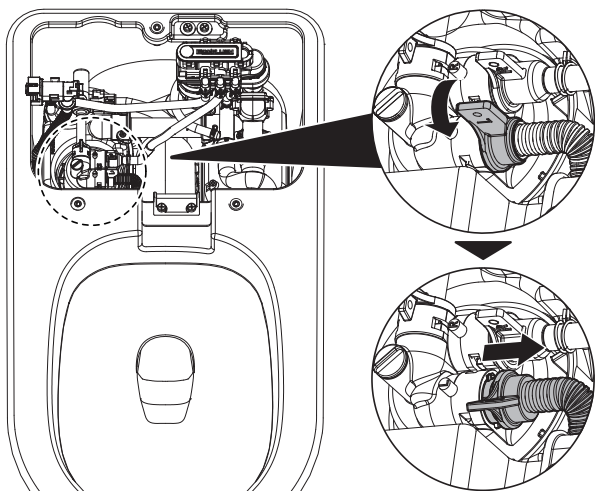


1

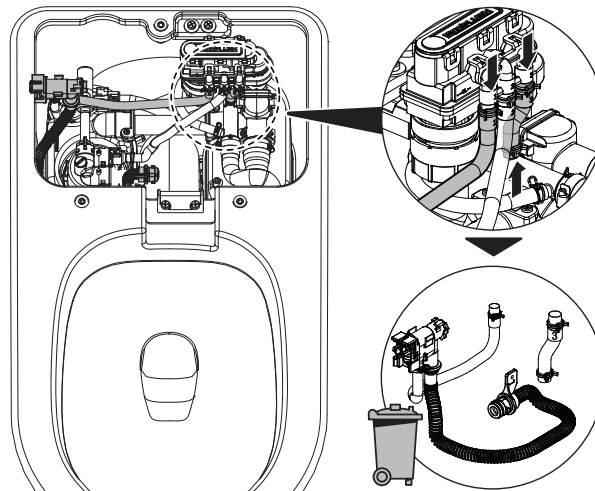


INSTALLATION

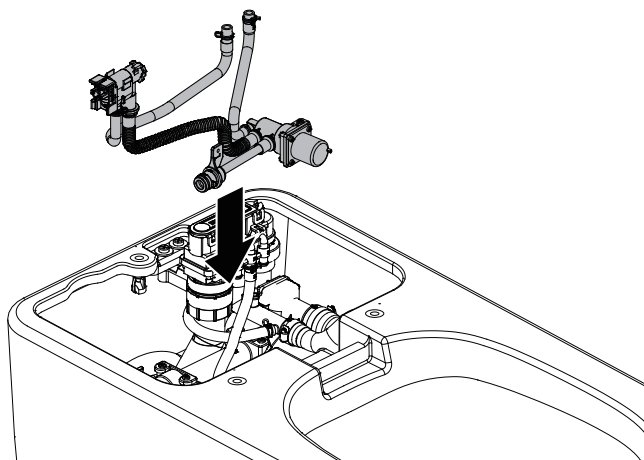
2



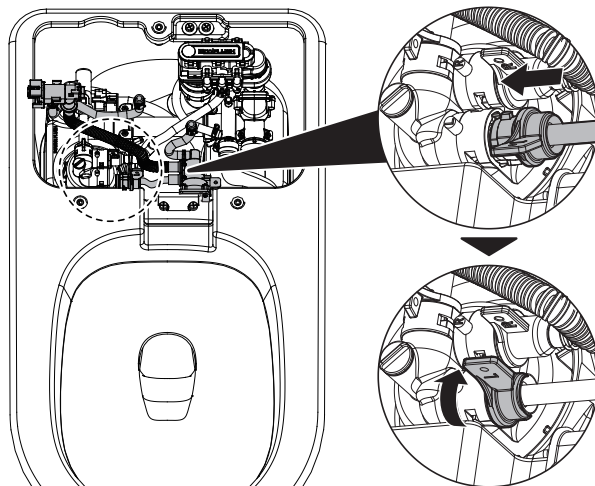
3



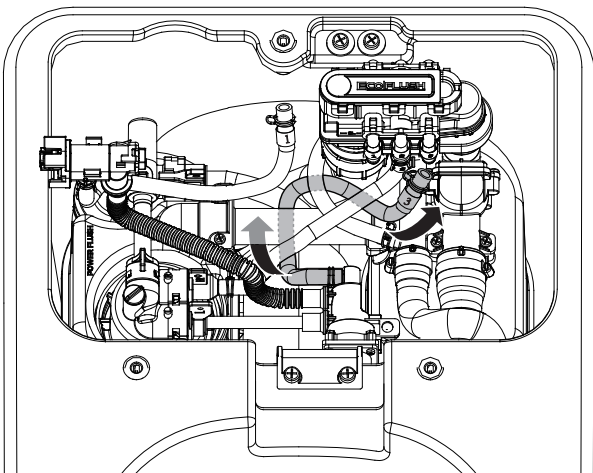
4



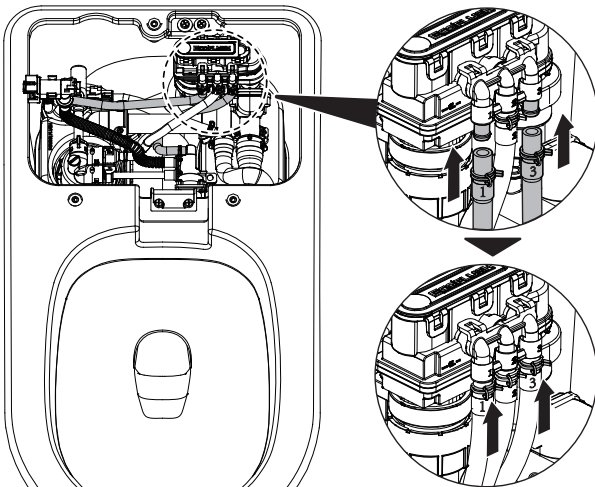
5



6

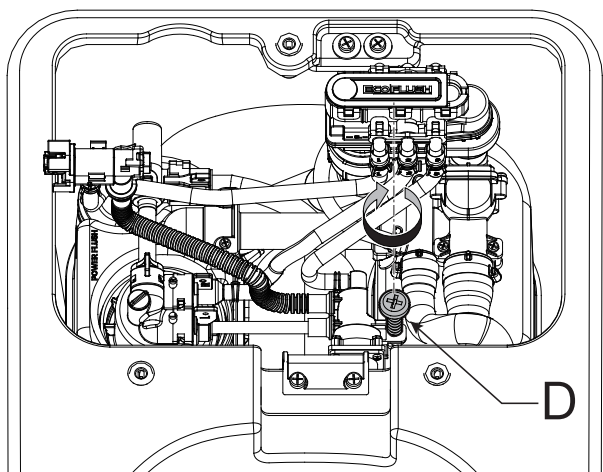


7

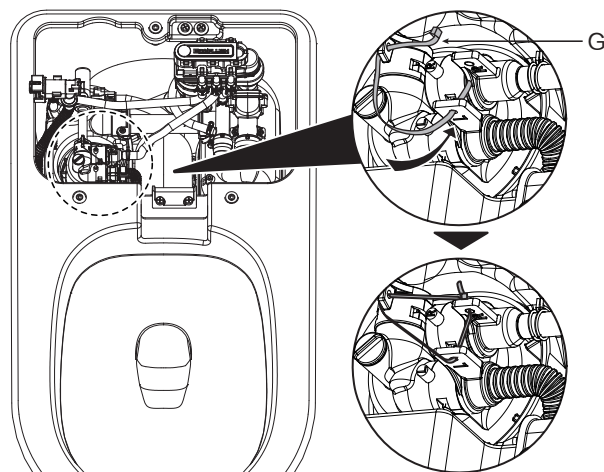


INSTALLATION

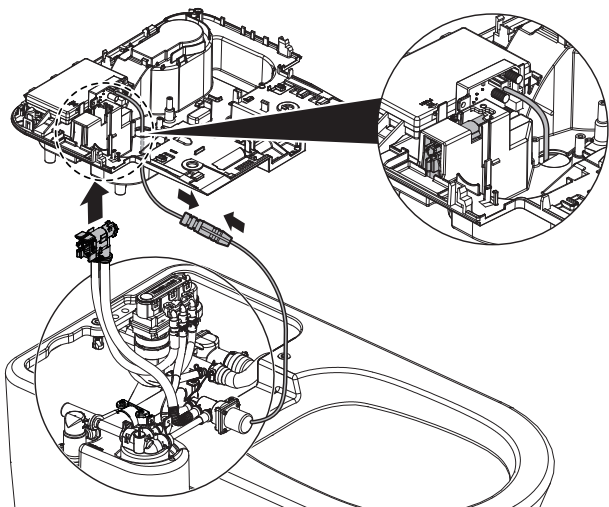
8 



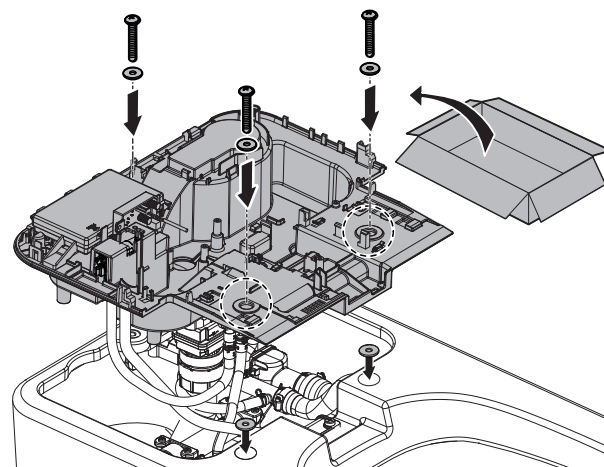
9



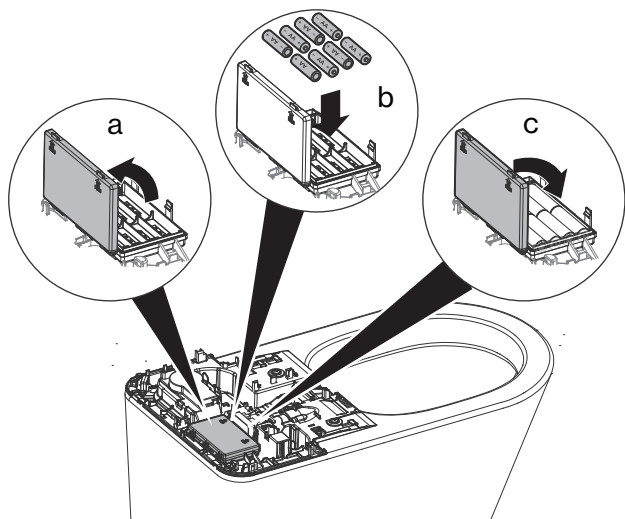
11



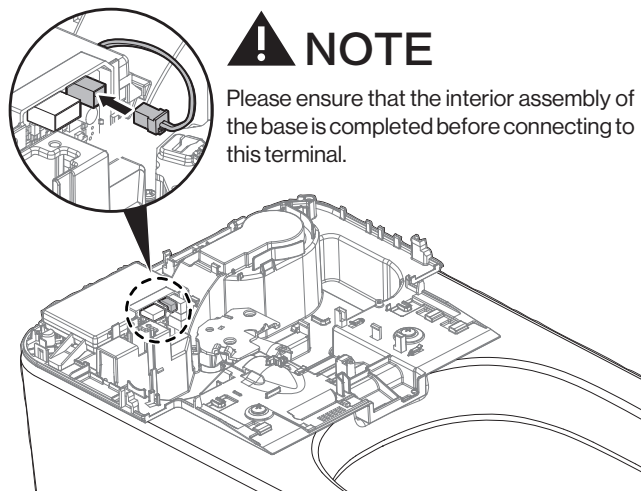
12 



13

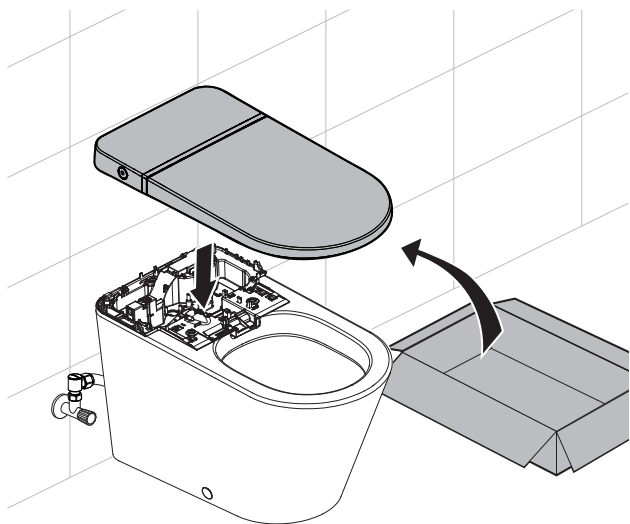


14

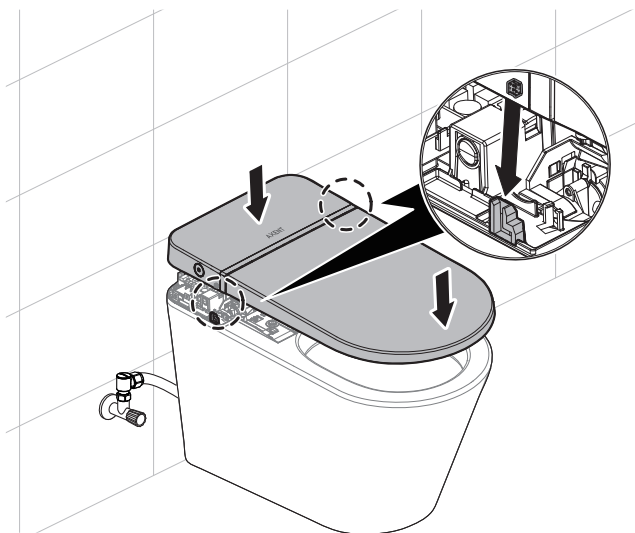


INSTALLATION

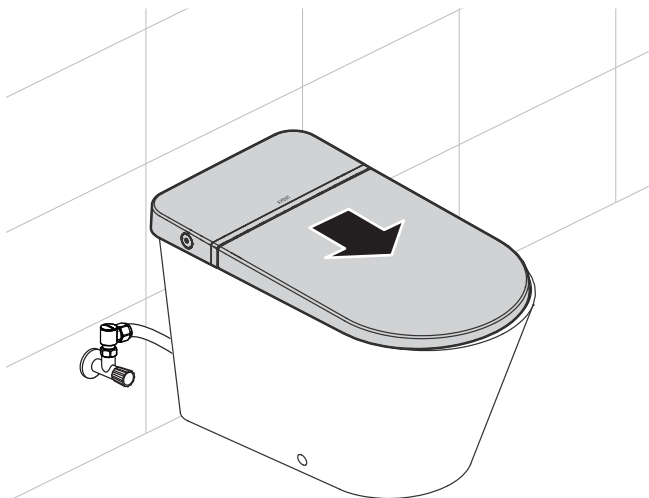
15



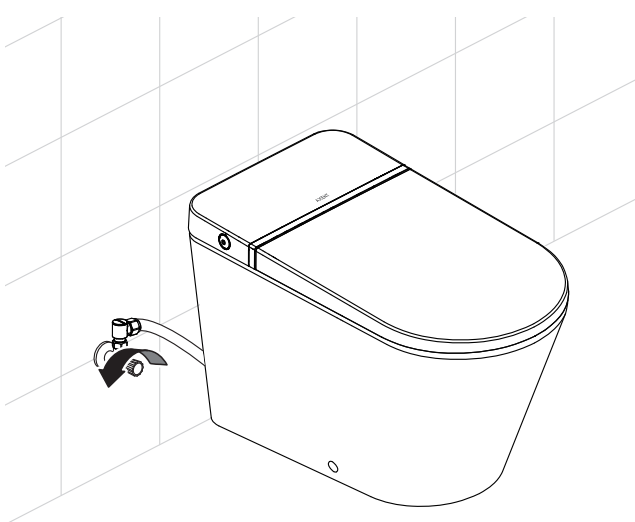
16



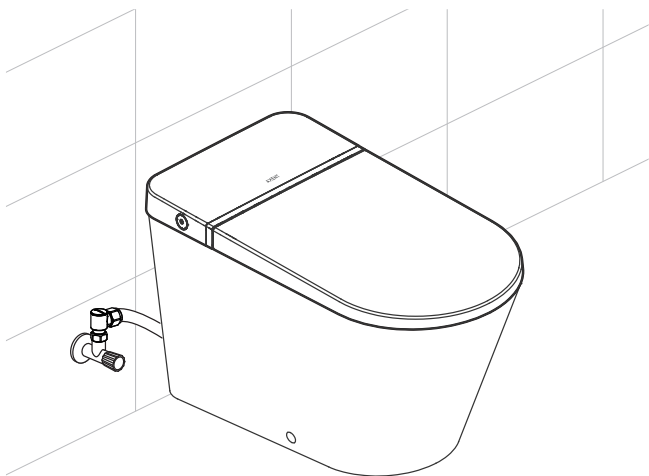
17



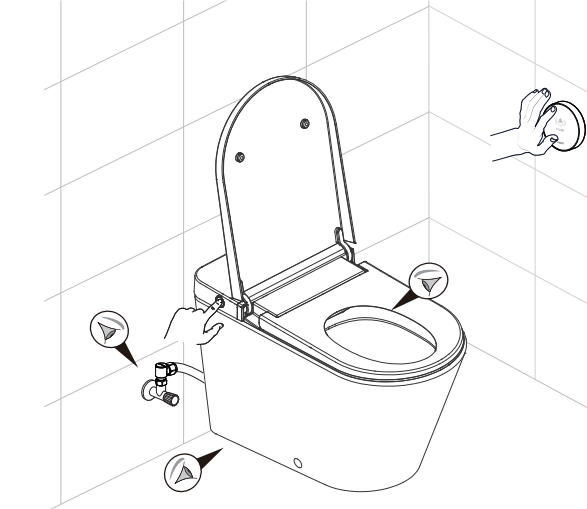
18



19

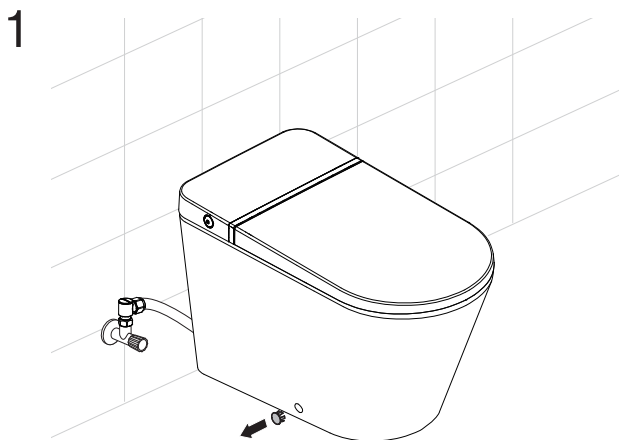


20

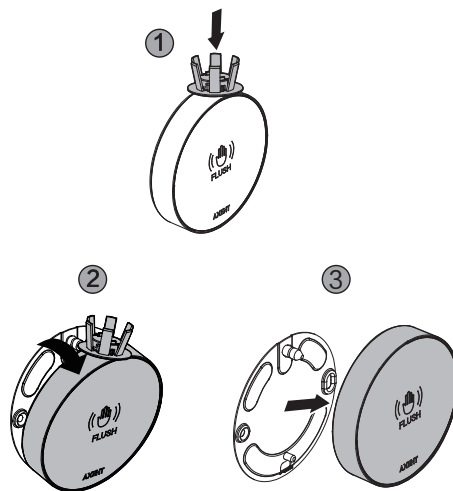


INSTALLATION

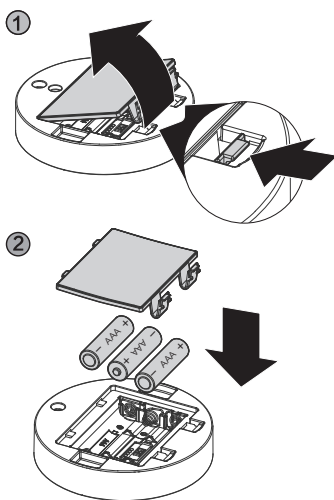
2



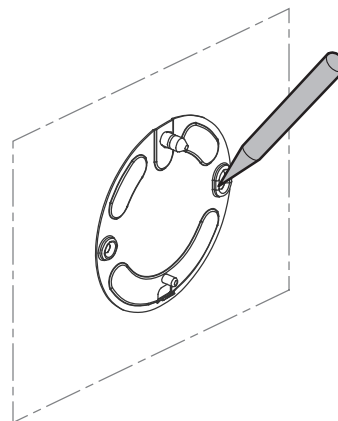
2



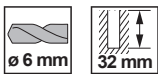
3



4

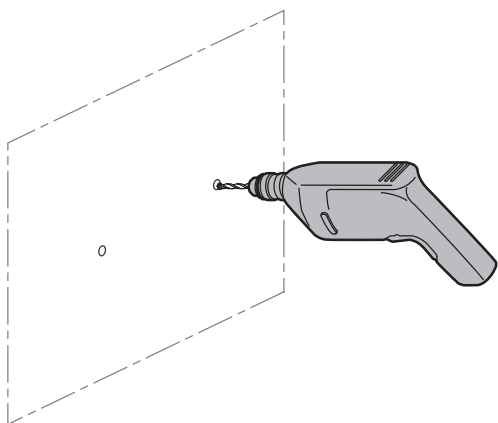


5

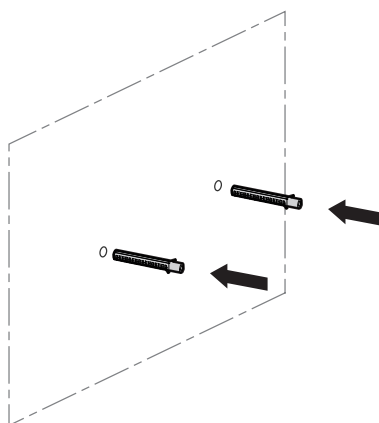


ø 6 mm

32 mm

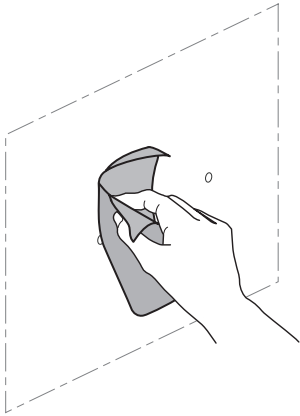


6

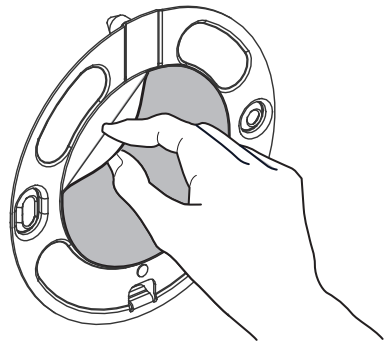


INSTALLATION

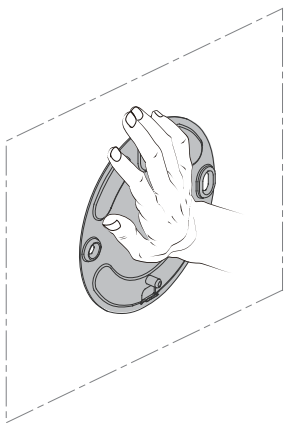
7



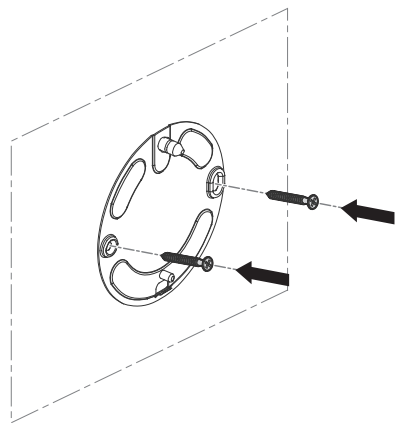
8



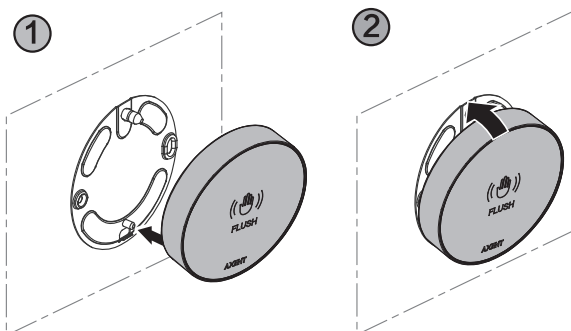
9



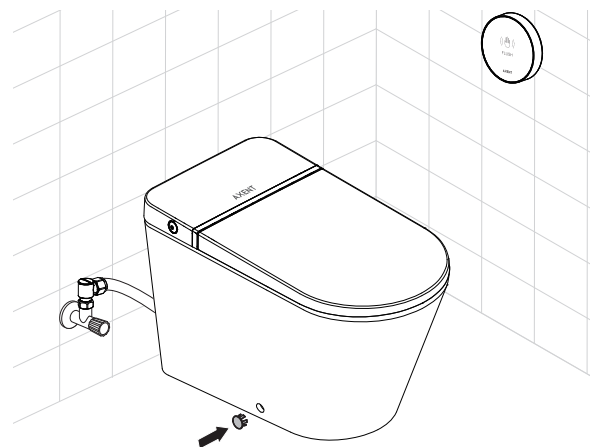
10



11

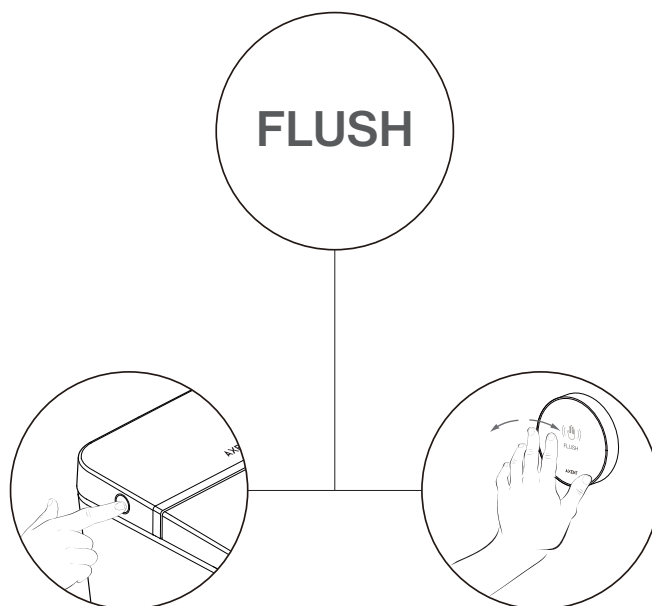


12



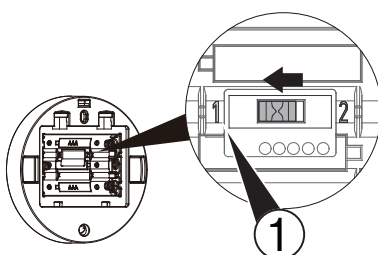
OPERATION

REGULAR USE

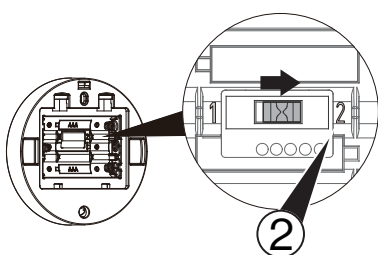
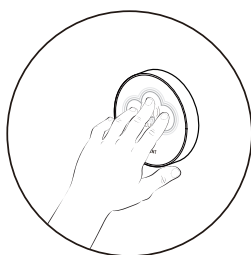


ADDITIONAL FEATURES

What position the Switch is decides which Operation Mode is.



- Position 1
Wave mode
Put your hand very nearly front of remote control, and wave it slowly.
(You can also touch the front of remote control to activate flush in this mode.)



- Position 2
Touch mode
Touch the front of remote control.

! REPLACING BATTERIES:

Please find the information for disassembling of remote control on page 9-10.
Please find the information for disassembling of main body on page 7.

TROUBLESHOOTING

FREQUENTLY ASKED QUESTIONS

IN CASE OF MINOR MALFUNCTIONS, PLEASE REFER TO THE FOLLOWING TABLE. IF THE BELOW SOLUTIONS DO NOT RESOLVE THE ISSUE, PLEASE CONTACT CUSTOMER SUPPORT FOR FURTHER EXAMINATION AND REPAIR.

Malfunction	Cause	Solution	Page
Indicator blink three times	The remote control storage battery low	Replace the remote control batteries	P9
Two times short «beep» from the toilet	The toilet storage battery low	Replace the toilet batteries	P7
Two times long «beep» from the toilet	The toilet storage battery run out of power	Replace the toilet batteries	P7

TECHNICAL DATA

Power	DC 6V (Main, AA×4×2) DC 4.5V (Remote Control, AAA×3)
Protection degree	IPX4

TECHNICAL SUPPORT

For any questions or any assistance with this product, please contact your dealer or call us at

1-800-769-4857

support@axentproducts.com

www.axentbath.us

LEGAL DIRECTIONS

This manual contains important information on the intended use, correct operation and proper maintenance of the equipment. Knowledge of and compliance with the instructions of this manual are provided for both the safe use of the equipment and for the safety of its operation and maintenance. In this manual, not all kinds of applications and improper manipulations are considered. In addition, attention is drawn to the following: The content of these instructions is neither part of any previous or existing agreement, commitment or legal relationship, nor does it change from an existing agreement, commitment or legal relationship. Any commitment by AXENT results from the respective warranty. These include the complete and authoritative warranty obligation AXENT. The statements in this manual do not constitute an extension or a restriction of the claims under the warranty provisions. This manual is protected by copyright. Copies and / or translations into other languages may be made only with prior written approval of AXENT.

GUARANTEE

AXENT LIMITED WARRANTY

A three-year limited warranty applies to all AXENT products purchased on or after May 1, 2019. All products purchased on or before April 30, 2019 OR purchased for use in a commercial or hospitality setting on any date are backed by AXENT's one-year limited warranty. All spare parts purchased for use with Axent products are covered by a six (6) month limited warranty unless otherwise stated on the product.

1. AXENT warrants that its products are free from defects caused by defective material and faulty workmanship for a period of three-year from the date of purchase by the original purchaser. The limited warranty is to the original purchaser only. The limited warranty is not transferable to any third party. Proof of purchase showing both original ownership and purchase date is required for any warranty claim. The limited warranty applies to all products sold by authorized dealers in the United States and Canada and used within the United States and Canada. This warranty is limited to parts only and AXENT is not responsible for any installation labor charges, removal charges, installation, or other incidental or consequential cost.
2. AXENT's sole and maximum liability for breach of its warranties herein is limited to the obligation, at AXENT's sole discretion to repair, replace, or make appropriate adjustments to bring the product back to normal operating function. AXENT reserves the right to inspection of the product and verification of normal residential usage conditions during the warranty period before warranty claims are handled. In no event shall AXENT or Seller be liable to Buyer for consequential, incidental, economic, or special damages stemming from any breach of express or implied warranty.
3. Purchaser shall comply with the following procedures in connection with the warranty claim:
 - AXENT is notified in writing by Purchaser within thirty (30) days after discovery of defects;
 - Purchaser obtains a Return Authorization from AXENT prior to returning any defective product to AXENT;
 - The defective products are returned to AXENT, all shipping charges prepaid by Purchaser (provided however, that if upon examination by AXENT, it determines that the products are entitled to warranty, then AXENT shall be responsible for shipping charge to and from AXENT's facility).
 - The defective products are received by AXENT for adjustment no later than fifteen (15) days following the last day of the warranty period; and
 - AXENT's examination of such goods shall disclose that such defects or failures have not been caused by misuse, abuse, neglect, improper installation or application, repair, alteration, damage by rain, fire or casualty or by accident or negligence in use, storage, transportation or handling.
4. This warranty does not apply to the following items:
 - Damage or loss sustained in a fire, earthquake, storm or any natural disaster etc....
 - Damage or loss resulting from any unreasonable use, misuse, abuse, negligence or improper care, improper cleaning or maintaining of the product.
 - Damage or loss as a result of the use of in-tank toilet cleaners.
 - Damage or loss resulting from any sediments or foreign matter contained in the water system.
 - Damage or loss from improper installation, harsh environment, improper removal and water pressure in excess of 80PSI.
 - Damage or loss resulting from electrical surges, lightning strikes or other acts which are not considered normal or the fault of AXENT.
 - Damage or loss resulting from normal wear and tear, such as gloss reduction or dulling, scratching or fading over time due to normal use, cleaning practices, water or atmospheric conditions including but not limited to: bleach, alkali, acid cleaners, dry powdered cleaners or any other abrasive cleaning agents or abrasive cleaning tools or aids.
 - The use of any product in a manner outside of the product instructions / owner's manuals.
 - AXENT shall not be liable for any failure caused by chloramines in the public treated waters or cleaners containing chlorine (calcium hypochlorite). Please note that use of high concentrate chlorine or chlorine related products can damage fittings. This damage can cause leakage resulting in property damage.
5. AXENT'S OBLIGATION TO HONOR THESE WARRANTIES IS CONTINGENT UPON AXENT'S RECEIPT OF PAYMENT IN FULL FOR THE GOODS ENTITLED TO THIS WARRANTY. AXENT DISCLAIMS ALL OTHER WARRANTIES, EXPRESS, IMPLIED, OR STATUTORY, INCLUDING, WITHOUT LIMITATION, THE IMPLIED WARRANTIES OF MERCHANTABILITY AND FITNESS FOR A PARTICULAR PURPOSE. SELLER HAS NOT AUTHORIZED ANYONE TO MAKE ANY REPRESENTATION OR WARRANTY OTHER THAN AS PROVIDED ABOVE. THE FOREGOING STATES THE ENTIRE WARRANTY LIABILITY OF SELLER.

To obtain warranty service, contact AXENT's service team through your dealer or plumbing contractor, or via the points of contact below:

Mailing Address: Attn. Customer Service Department 3 Musick, Irvine, CA 92618
E-mail: Support@axentproducts.com
Phone: 1-800-769-4857

Place serial number sticker here for reference:

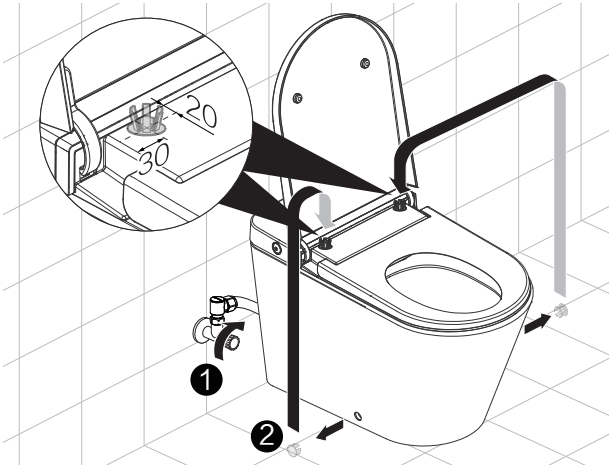


AXENT Corporation Ltd.
www.axentbath.us
support@axentproducts.com
1-800-769-4857

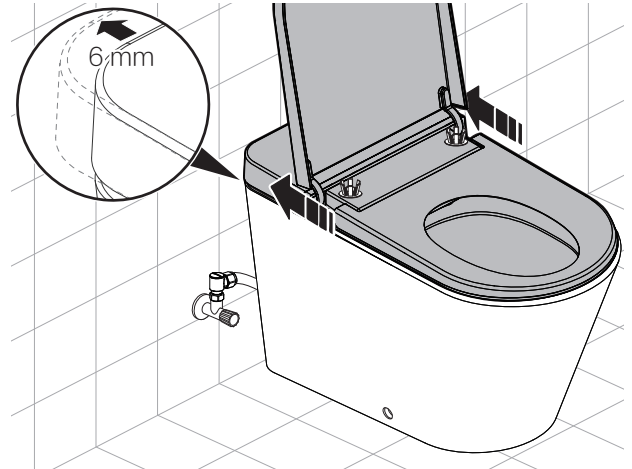


RC UNIT PAIRING

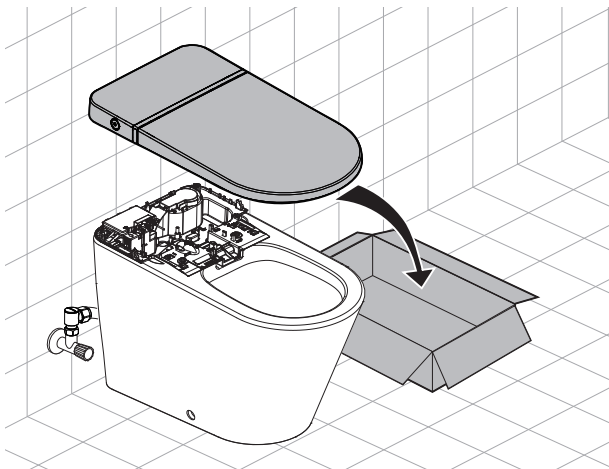
1



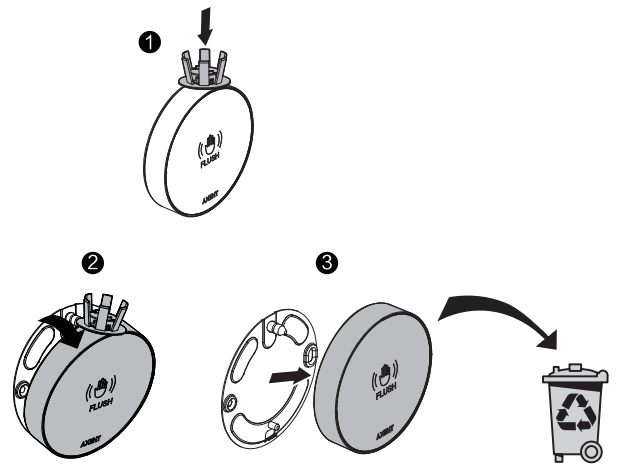
2



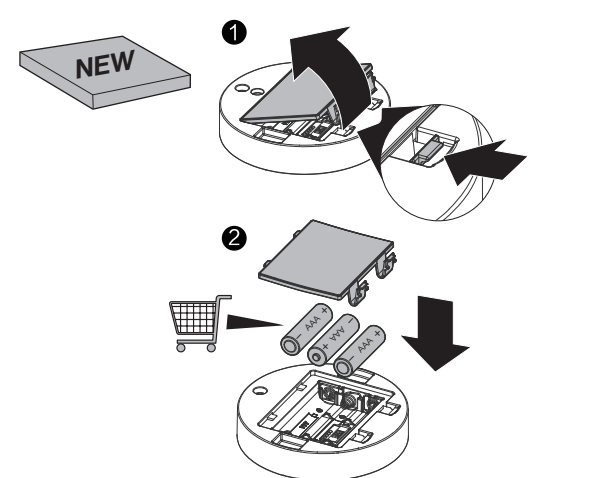
3



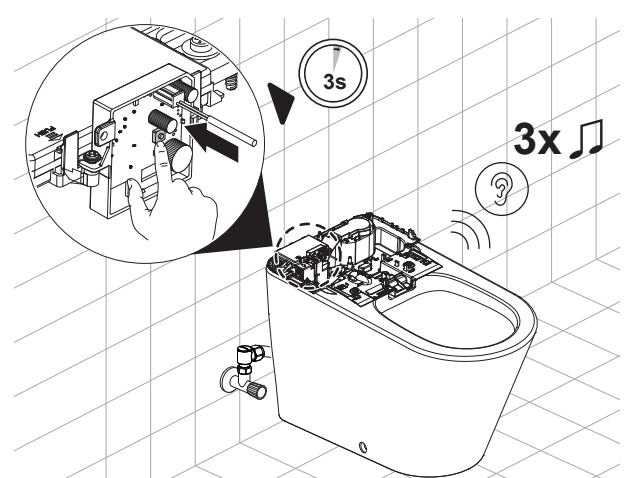
4



5



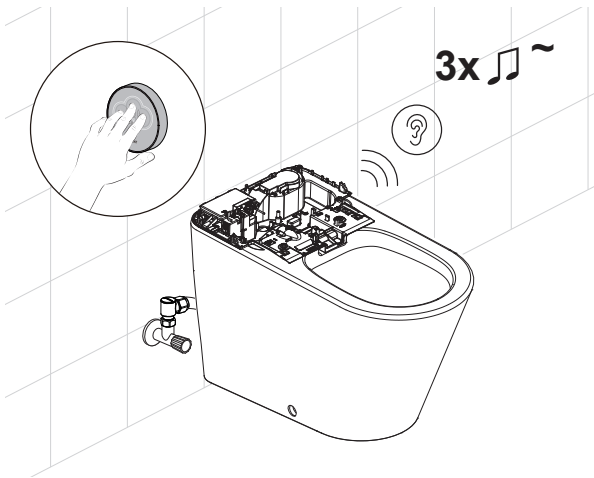
6



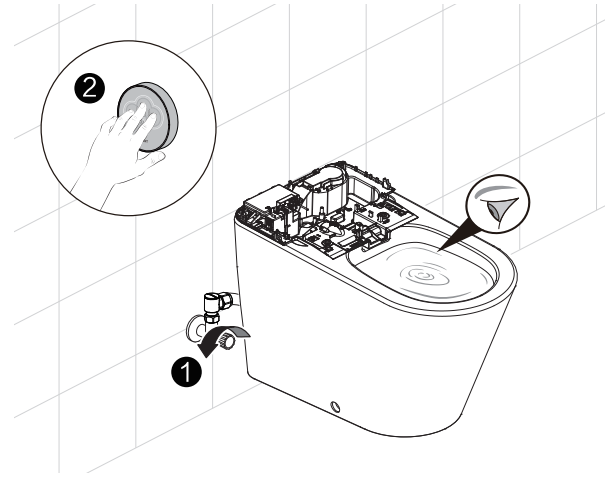


RC UNIT PAIRING

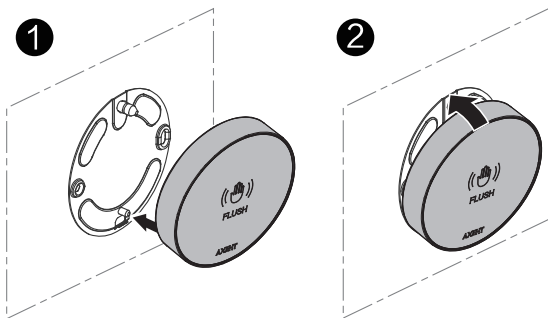
7



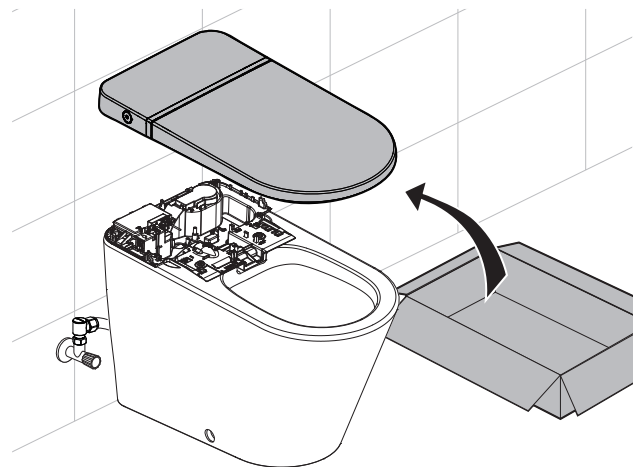
8



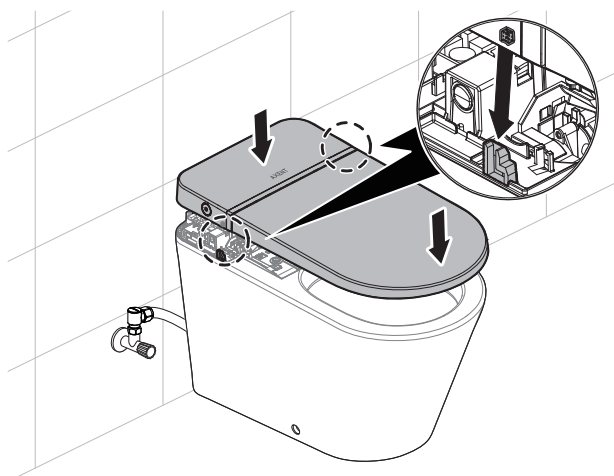
9



10



11



12

