

## M Collection metro series

Wall-mount vanity

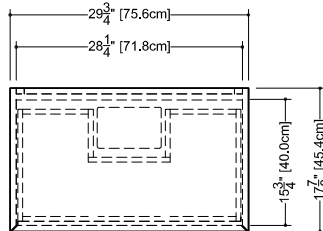
10" height – 18" depth



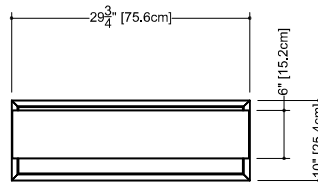
# Furniture

## Wall-mount vanity MM 3010 WM – 1 drawer – 30" length

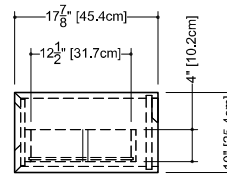
17 7/8" depth x 29 3/4" length x 10" height – 454 x 756 x 254 mm



plan view



front view



side view

### finishes and colors

#### oak

natural  
white  
wenge  
light grey  
blue steel  
sand  
hemp  
smoked

#### matte lacquer\*

white  
light grey  
blue steel  
sand  
hemp

#### walnut

natural  
chocolate

#### high gloss lacquer\*\*

white

- 45 degree bevel cuts, precluding the need for drawer hardware

- all natural wood veneers

- AWI rated level 5 marine grade finish for moisture resistance and durability (industry's highest finishing class)

- finished vanity interiors in addition to front and sides

- solid maple dovetailed drawer

- slow-closing ball-bearing glides

#### special wall preparation recommendations

The distance between studs should not exceed 16". Each stud should be reinforced vertically by 2" x 3" wooden studs and horizontally with 2" x 6" wooden studs at a height of 30" all along the width of the vanity.

\*ATTENTION: Vessel sink not recommended with this finish

\*\*ATTENTION: High-Gloss finish on sides and drawer facade only. Bottom and interior in white mat. This finish should only be ordered with an integrated countertop (vessel sink not recommended)

WETSTYLE cannot be held responsible for any technical errors and reserves the right to make revisions without notice.

Approximate measurement.  
The manufacturer accepts 1/4" (6,35mm) variance.

www.WETSTYLE.CA - Montreal - Canada  
Tel. 450.536.9000 - 1 888.536.9001 - Fax. 450.536.0202

