

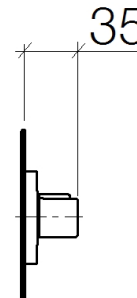
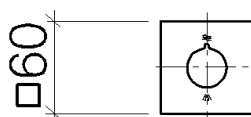


### Product specifications

#### Exposed trim parts only, rough to be ordered separately

- Manual diverter
- Diverter with ceramic discs
- Flange 2 3/8 x 2 3/8"

**NOTE: Important! Due to minimum rough-in requirements, a framing of 2 x 6 studs is needed.**



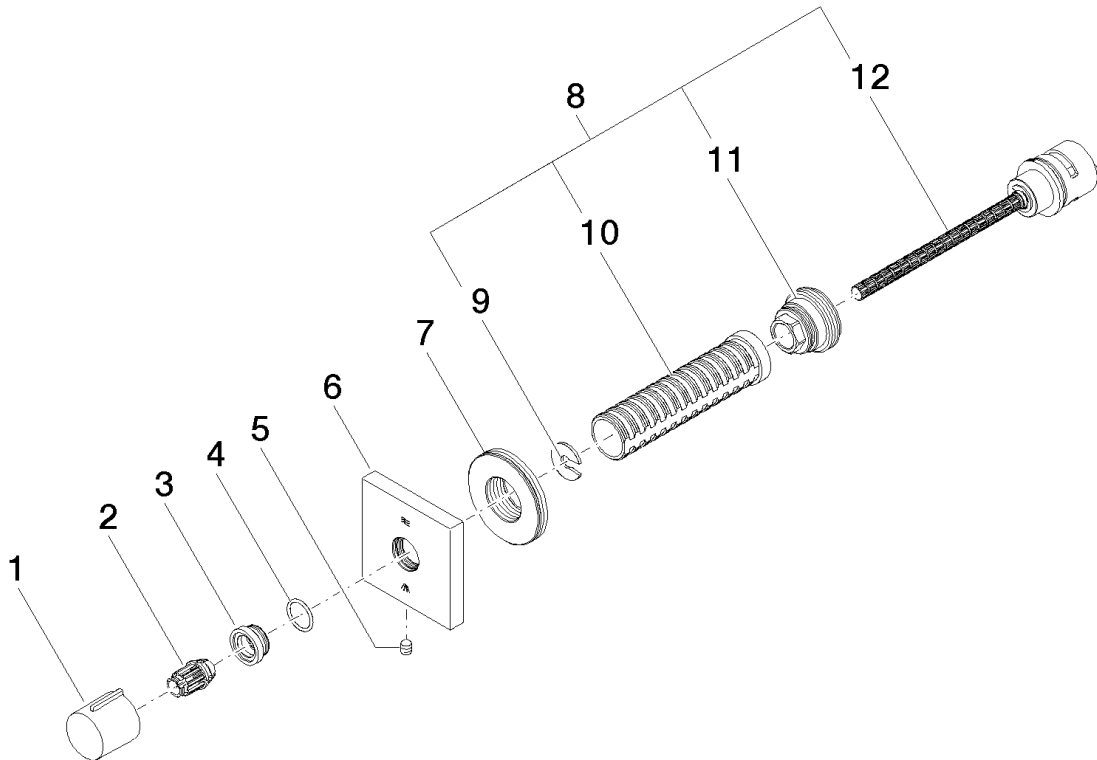
### Surfaces

- |                 |             |
|-----------------|-------------|
| • chrome        | 36128980-00 |
| • chrome        | 36128980-00 |
| • matt platinum | 36128980-06 |
| • matt platinum | 36128980-06 |

### Accessories required

- Rough for two-way diverter; 35128970
- Rough for two-way diverter; 35128970

**Exploded assembly drawing**



**Order quantity**

<b>No.</b>	<b>Article number</b>	<b>Name</b>	<b>Installation quantity</b>
<b>1</b>	092098001ff	handle	1
<b>2</b>	09121200590	fixing cap	1
<b>3</b>	091212043ff	base	1
<b>4</b>	09141001790	seal	1
<b>5</b>	09311111290	pin	1
<b>6</b>	092798021ff	rosette	1
<b>7</b>	09210215190	sleeve	1
<b>8</b>	0490031590090	diverter	1
<b>9</b>	09160102690	ring	1
<b>10</b>	09184007790	sleeve	1
<b>11</b>	09240422390	nipple	1
<b>12</b>	09900315990	diverter	1

