



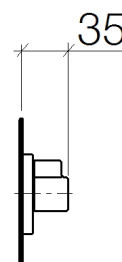
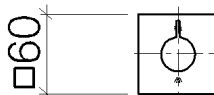
### Product specifications

#### Exposed trim parts only, rough to be ordered separately

- Manual diverter
- Diverter with ceramic discs
- Flange 2 3/8 x 2 3/8"

[ADA]

**NOTE: Important! Due to minimum rough-in requirements, a framing of 2 x 6 studs is needed.**



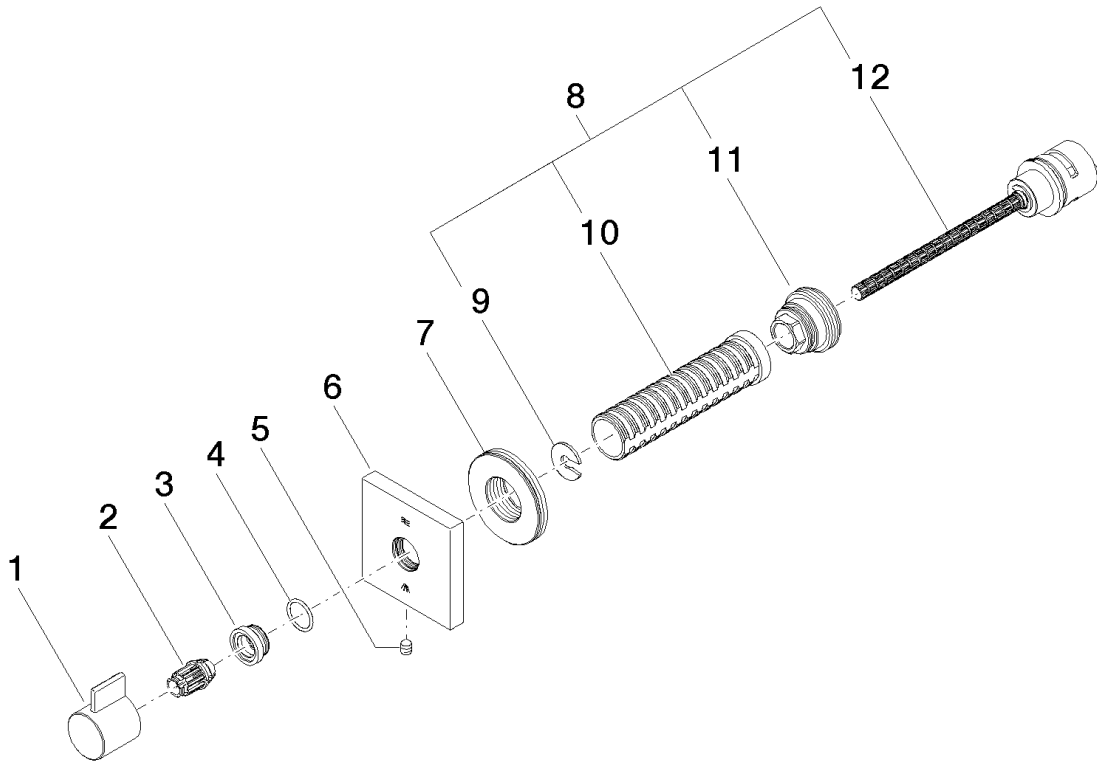
### Surfaces

- |                 |             |
|-----------------|-------------|
| • chrome        | 36128985-00 |
| • chrome        | 36128985-00 |
| • matt platinum | 36128985-06 |
| • matt platinum | 36128985-06 |

### Accessories required

- Rough for two-way diverter; 35128970
- Rough for two-way diverter; 35128970

**Exploded assembly drawing**



**Order quantity**

<b>No.</b>	<b>Article number</b>	<b>Name</b>	<b>Installation quantity</b>
1	092098002ff	handle	1
2	09121200590	fixing cap	1
3	091212043ff	base	1
4	09141001790	seal	1
5	09311111290	pin	1
6	092798021ff	rosette	1
7	09210215190	sleeve	1
8	0490031590090	diverter	1
9	09160102690	ring	1
10	09184007790	sleeve	1
11	09240422390	nipple	1
12	09900315990	diverter	1

