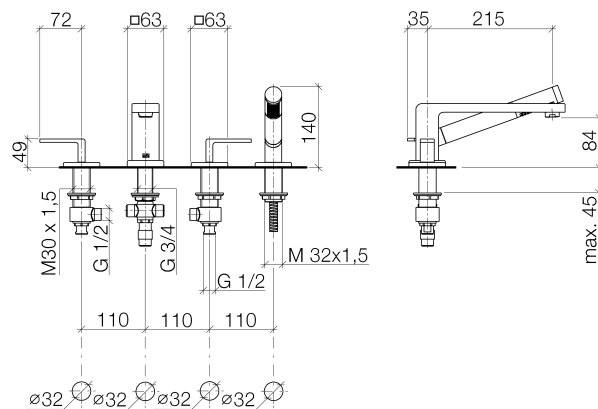




**Product specifications**

- **8 1/2" projection**
- M 24 x 1 aerator – male thread
- Back flow preventer in shower outlet
- 1/2" deck valves with ceramic disc cartridges
- Automatic diverter
- Hand shower with descaling system and back flow preventer
- Metal shower hose 88 5/8", consisting of 1 pc. 19 5/8" chrome plated metal hose and 1 pc. 68 7/8" flex line
- Individual flanges 2 1/2 x 2 1/2"
- Valve / hand shower hole diameter 1 1/4"
- spout hole diameter 1 1/4"
- 2x 1/2" x 1/2" x 15 3/4" high pressure hose
- 20° x 1/2" x 1/2" angle
- ...
- Shower hose guide
- Hand shower water flow rate limited to max. 2.38 gpm
- Internal backflow preventer.

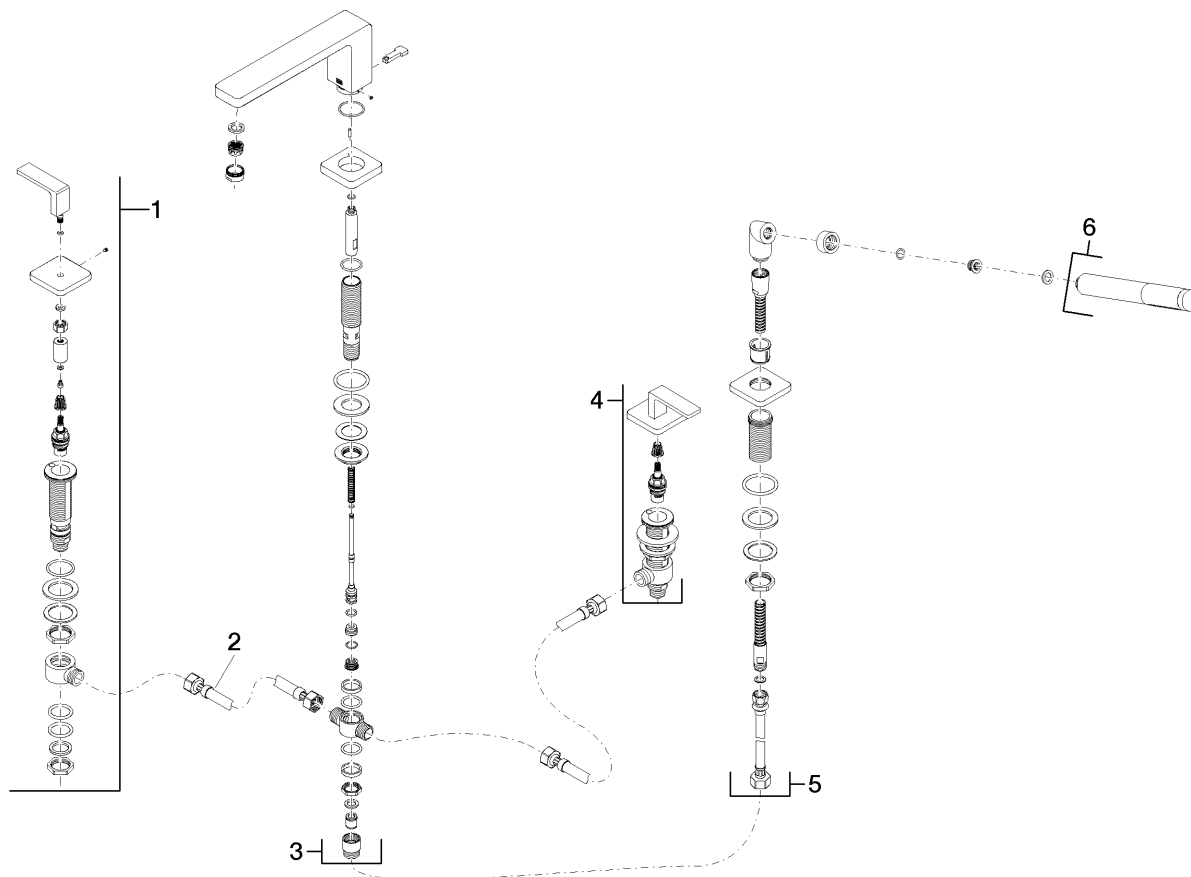




**Surfaces**

- chrome 27512710-00
- chrome 27512710-00
- matt platinum 27512710-06
- matt platinum 27512710-06

**Exploded assembly drawing**



**Order quantity**

<b>No.</b>	<b>Article number</b>	<b>Name</b>	<b>Installation quantity</b>
<b>1</b>	20000710ff	side panel	1
<b>2</b>	1250297090	hose	2
<b>3</b>	13512710ff	spout	1
<b>4</b>	20000711ff	side panel	1
<b>5</b>	27702710ff	shower set	1
<b>6</b>	28010979ff	shower	1

**LULU Deck-mounted tub mixer, with hand shower set for deck-mounted tub installation, with individual flanges**

Article number: 27512710

