



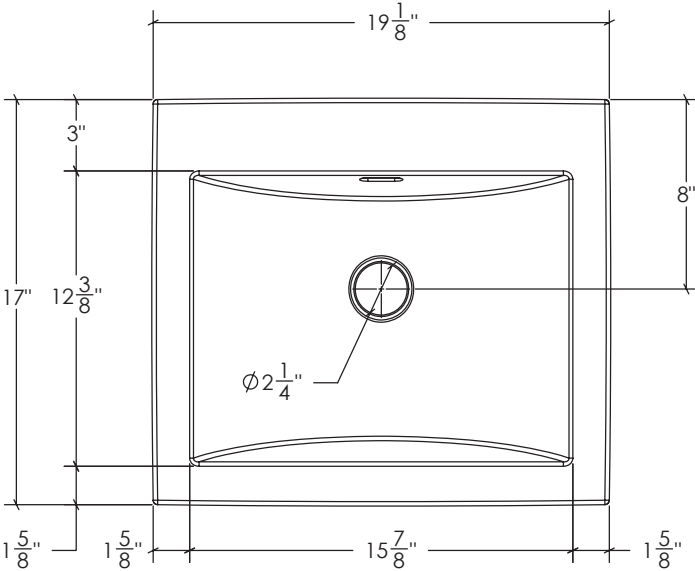
# MMA-1916

**FEATURES:**

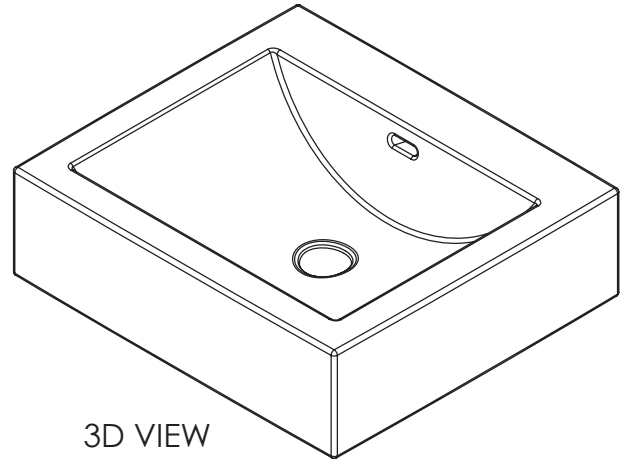
- \* Sink Size: 19 1/8" x 17" x 6 7/8"
- \* Material: Solid Surface
- \* Counter Top Sink with Deck Mount Hole
- \* Recommended Drain: DS-001
- \* For Faucets with Overflow
- \* For Use With Standard Pop Up Drain
- \* Warranty: One Year Limited Warranty

**CODES / STANDARDS APPLICABLE**

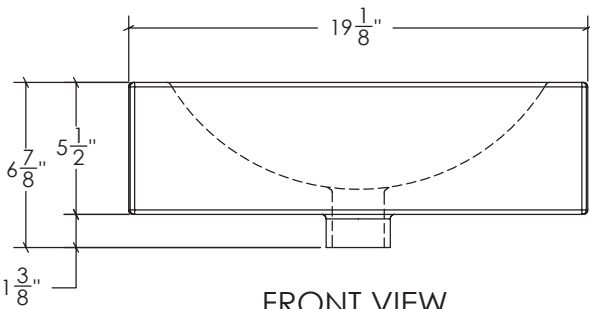
- \* CSA B45
- \* ASME A112.19.2



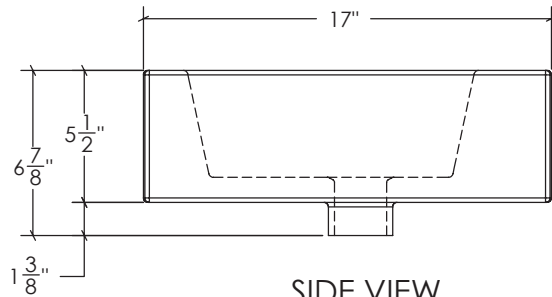
TOP VIEW



3D VIEW



FRONT VIEW



SIDE VIEW

**JOB INFORMATION:**

Job Name \_\_\_\_\_  
 Date Specified \_\_\_\_\_  
 Contractor \_\_\_\_\_

\* Specifications and drawings provided on this sheet are for illustration only. Cantrio Concepts will not be held responsible for cutouts made without the actual product or product template.