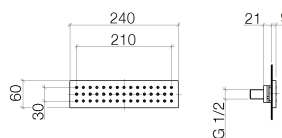


Product specifications

- Cover plate 9 1/2" x 2 3/8"
- Descaling system
- Manual control via xTool or Pressure balanced valve

- Water flow rate limited to max. 1.72 gpm

NOTE: Important! Due to minimum rough-in requirements, a framing of 2 x 6 studs is needed.



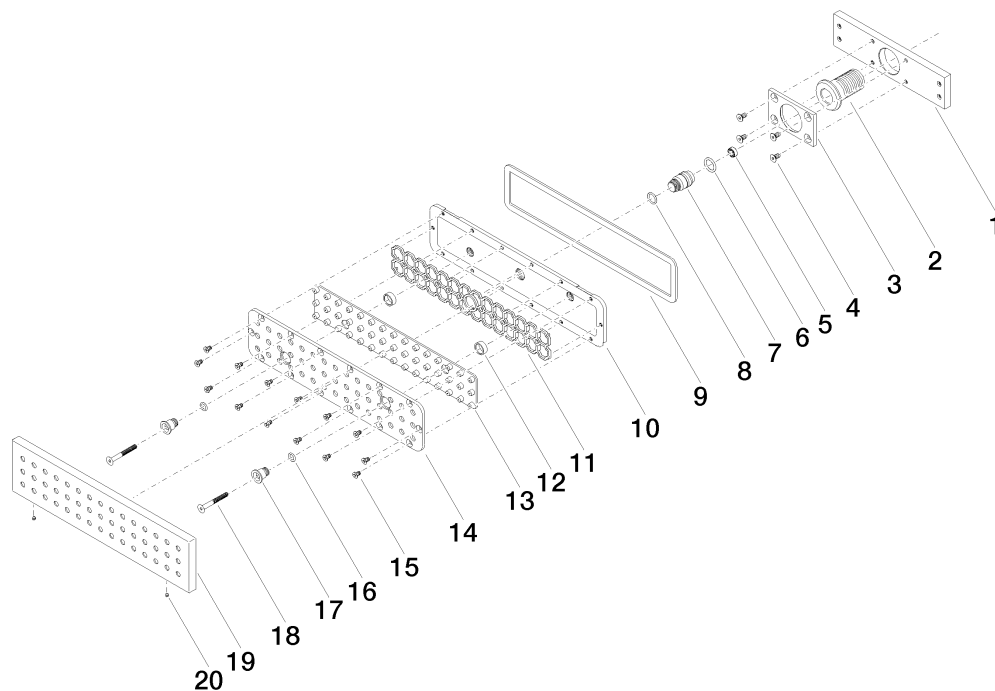
Surfaces

- chrome 36517979-00
- matt platinum 36517979-06

Accessories required

- Rough; 35206970

Exploded assembly drawing



Order quantity

No.	Article number	Name	Installation quantity
1	09110213790	holder	1
2	09240424790	connection	1
3	09110213890	plate	1
4	09303011690	screw	4
5	09230103290	flow reducer	1
6	09141000390	seal	1
7	09240424890	nipple	1
8	09141004290	seal	1
9	09140313390	seal	1
10	091102135ff	base	1
11	09179705890	holder	1
12	09281014290	ring	2
13	09120107690	insert	1
14	091102136ff	cover	1
15	09303016390	screw	14
16	09141013290	seal	2
17	092404249ff	nipple	2
18	09303016490	screw	2
19	092799001ff	rosette	1
20	09311100690	pin	2

