

Elara 6042 RH Pure Air Bath



Product Codes beginning with: ELA6042ARL

Also applies to products sold under part numbers: LN10, LN30

TECHNICAL SPECIFICATIONS

	English	Metric
Outer Dimensions	60" L x 42" W x 26" H	1524 mm L x 1067 mm W x 660 mm H
Interior Dimensions (bottom of bath) L x W (Mid) x W (End)	36 1/2" L x 26 1/2" W x 26 1/2" W	927 mm L x 673 mm W x 673 mm W
Drain/Blower Configuration	Right hand drain/Left end blower	Right hand drain/Left end blower
Bath Weight (empty)	113 lbs	51 kg
Total Weight/Floor Loading	1,146 lbs 65.5 lbs/ft ²	520 kg 320.1 kg/m ²
Operating Gallonage (min-max)	61 (min) 94 (max) U.S. Gals	231 (min) 356 (max) L
Electrical Specifications	Each component requires a separate, dedicated GCFI protected circuit(s)	
Blower		120V 15A 60HZ
Chromatherapy (if selected)		120V 15A 60HZ

FEATURES, UPGRADES & ACCESSORIES

Material Type: High-Gloss Acrylic

Install Type: Drop-in or Undermount

Available Colors: White (W), Almond (A), Oyster (Y), Black (B)

Cut-out Template: 58" x 40" or Undermount Template DQ50000

Standard (Included) Features:

Chromatherapy lighting, 800w blower, bottom and side air channels

Available Control Systems:

J4 Luxury Control Panel (standard)

J5 Luxury LCD Control Panel

Available Upgrades:

900w blower (with J5 LCD Control Panel)

Available Accessories:

DA34 Rotary Drain Kit PVC (specify metal finish)

HP55 Rotary Drain Kit (specify metal finish)

G864 Hand Rails (specify metal finish)

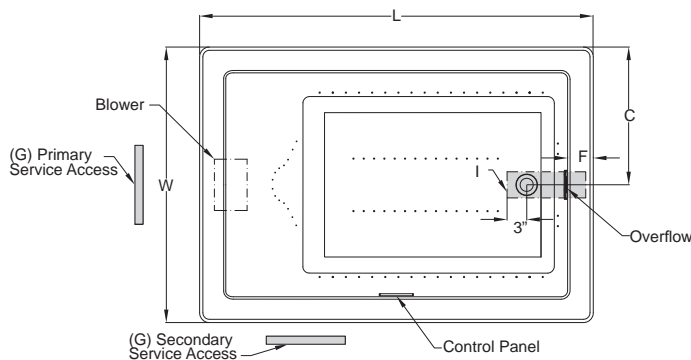
827: Chrome, 826: Brushed Nickel, 845: Oil Rubbed Bronze

EK91 21" Straight Pillow (specify color) 959: White, 958: Almond,

969: Oyster

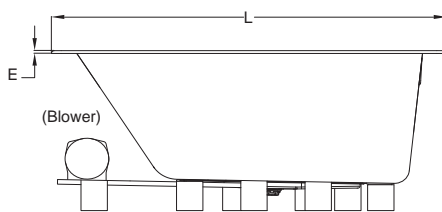
GQ88 Light Chromatherapy Add-on Kit

KEY DIMENSIONS

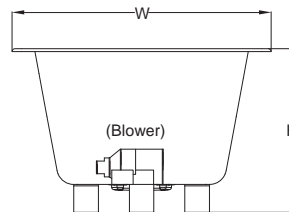


*Deck width reflects only area indicated on detail.

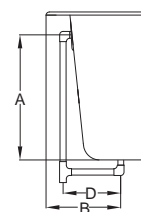
Letter	Description	English	Metric
L	Outer Length	60"	1524 mm
W	Outer Width	42"	1067 mm
H	Overall Height	26"	660 mm
A	Overflow Height	18 1/2"	470 mm
B	Long Edge to Drain Center	10 5/8"	269 mm
C	Short Edge to Drain Center	21"	533 mm
D	Drain Shoe Length	6"	152 mm
E	Deck Height	1/2"	13 mm
F	Deck Width*	4 1/4"	107 mm
G	Service Access Dimensions	12" H x 18" L	305 mm x 457 mm
I	Floor Cut-out for Drain	12" x 4"	305 mm x 102 mm



Side View



End View



Drain/Overflow

NOTE: Graphics May Not be to Scale

© 2010 Jacuzzi Luxury Bath • For additional information call Customer Service 800-288-4002 • www.jacuzzi.com/technicalspecs

Refer to installation instructions included with fixture before beginning installation. Please confirm product availability and specifications before commencing with any installation work.

PRODUCT SPECIFICATIONS AND AVAILABILITY ARE SUBJECT TO CHANGE WITHOUT NOTICE.

HD00000 REL 03/10