

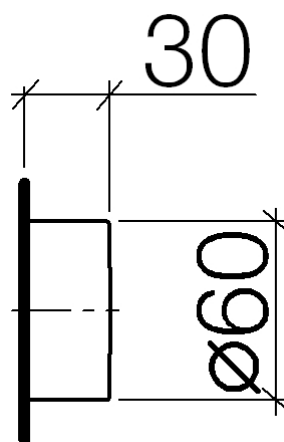


### Product specifications

Exposed trim parts only, rough to be ordered separately

- Manual diverter
- Without flange
- Handle  $\varnothing$  2 3/8"

**NOTE: Important! Due to minimum rough-in requirements, a framing of 2 x 6 studs is needed.**



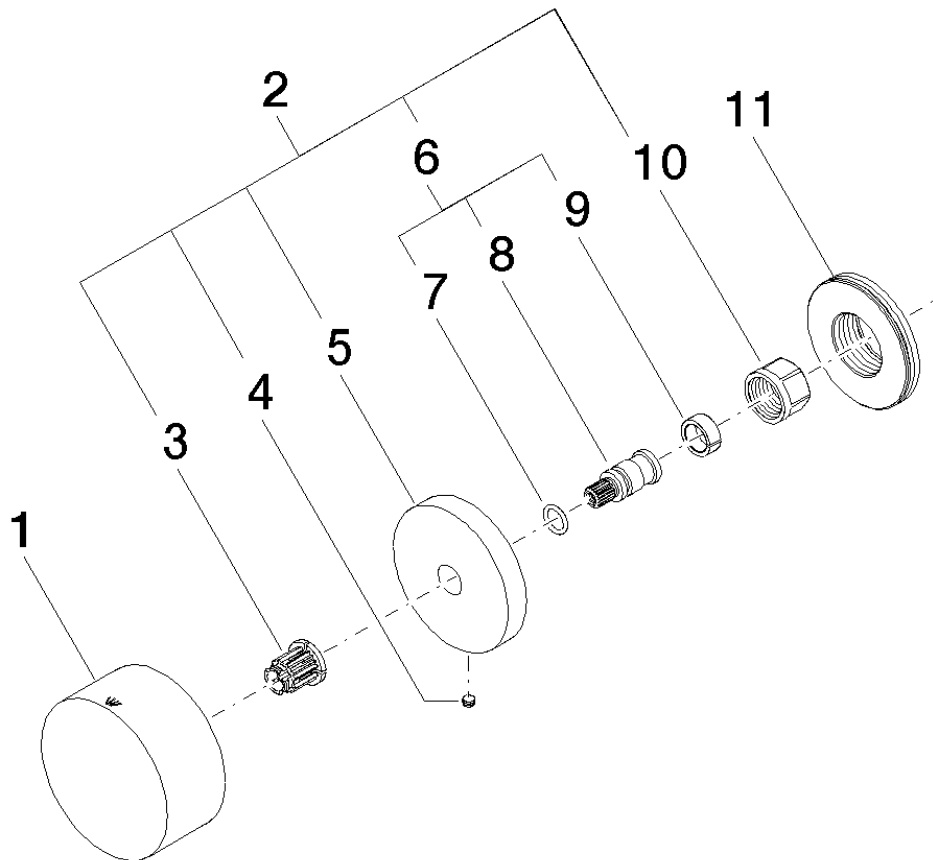
### Surfaces

- |                 |             |
|-----------------|-------------|
| • chrome        | 36125740-00 |
| • matt platinum | 36125740-06 |
| • matt black    | 36125740-33 |

### Accessories required

- Rough for two-way diverter; 35125970

**Exploded assembly drawing**



**Order quantity**

<b>No.</b>	<b>Article number</b>	<b>Name</b>	<b>Installation quantity</b>
<b>1</b>	092074007ff	handle	1
<b>2</b>	04277400200ff	rosette	1
<b>3</b>	09121200290	fixing cap	1
<b>4</b>	09311105590	pin	1
<b>5</b>	092774002ff	rosette	1
<b>6</b>	04290602000ff	spindle	1
<b>7</b>	09141006090	seal	1
<b>8</b>	092906020ff	spindle	1
<b>9</b>	09141502090	ring	1
<b>10</b>	09233002390	nut	1
<b>11</b>	09300110790	sleeve	1

