

### EVOLUTION™ 5' X 32" IA-LHO / RHO

Comfortable bathing design with form-fitted backrest and molded-in armrests

- 2425VC-LHO Built-In Integral Apron Left Hand Drain Outlet (specify color)**
- 2425VC-RHO Built-In Integral Apron Right Hand Drain Outlet (specify color)**
  - EverClean® System
  - Acrylic with fiberglass reinforcement
  - Integral apron with removable access panel
  - Integral three-sided, tiling/water retention flange
  - 1.25 HP self-draining pump/motor
  - Eight flow adjustable jets including:
    - Two adjustable Comfort Jets™ Hi Flo
    - Six adjustable Comfort Jets™
  - Two silent air volume controls
  - Side-mounted On/Off control
  - Deep Soak Overflow Drain for maximum water depth
  - Complete factory installed and tested whirlpool system
- 2425V-LHO Built-In Integral Apron Left Hand Drain Outlet (specify color)**
- 2425V-RHO Built-In Integral Apron Right Hand Drain Outlet (specify color)**
  - Same as above without the EverClean® System
- 2425V-LHO.002 Bathing Pool**
- 2425V-RHO.002 Bathing Pool**

### Nominal Dimensions:

60" x 32" x 21-1/2"  
(1524 x 813 x 546mm)

### Compliance Certifications -

#### Meets or Exceeds the Following Specifications:

- Underwriters Laboratories - Hydromassage Bathtubs UL 1795
- ASME A112.19.7M for Whirlpool Appliances
- ANSI Z124.1 for Plastic Bathtubs
- ASTM E162 for Flammability
- NFPA 258 for Smoke Density

American Standard whirlpools with EverClean® incorporate a patented silver-ion additive right into the circulation piping to protect the pipes from mold, mildew, algae and fungus that could cause deterioration or staining of the pipes.



#### Components Required:

- Bath Filler\*: (specify finish)
- Bath Drain: 1599.205.XXX (specify color)

#### Custom Accessories Available:

- Safe-T-Heater: 9075.120

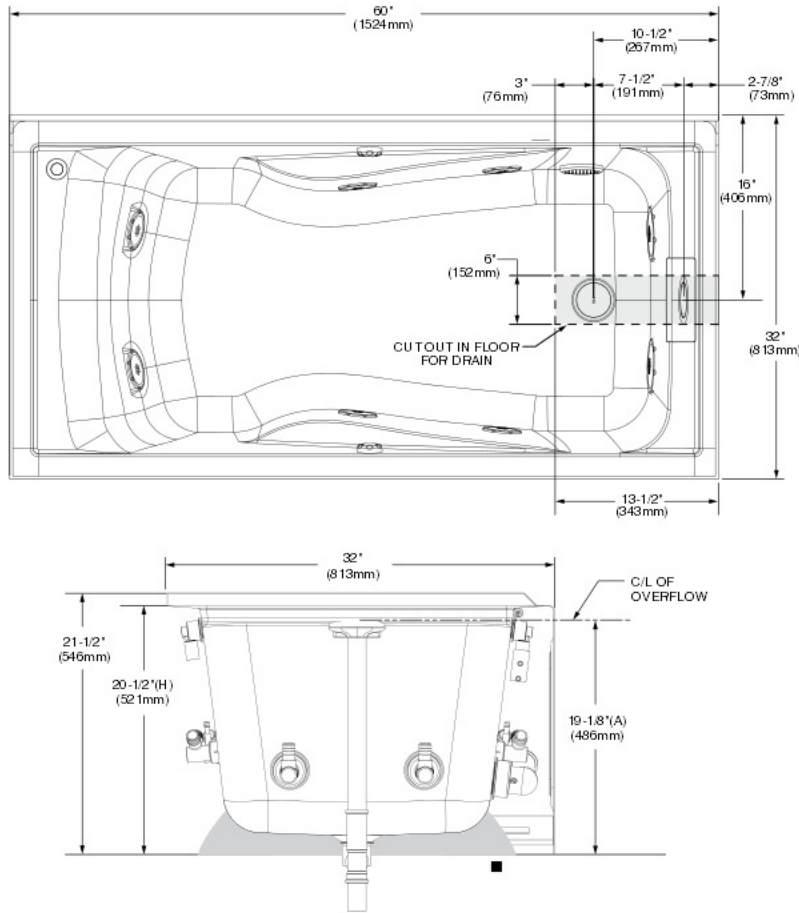
\* See American Standard Faucet Selector

For color/finish availability and other faucet choices, please see the Product Selector and Pricing Guide.

**NOTE:** Whirlpool Heater is designed to maintain water temperature during operation. It will not heat cold water to desired bathing temperature.

**SEE REVERSE FOR ROUGHING-IN DIMENSIONS AND PRODUCT SPECIFICATIONS**

Model 2425V-LHO  
shown



DIMENSIONS OF FIXTURES ARE NOMINAL AND MAY VARY WITHIN THE RANGE OF TOLERANCES ESTABLISHED BY ANSI STANDARDS Z124.1 AND A12.19.7.

**GENERAL SPECIFICATIONS FOR 2425V WHIRLPOOL**

INSTALLED SIZE \_\_\_\_\_ 60 x 32 x 20-1/2 (1524 x 813 x 521mm)  
 WEIGHT \_\_\_\_\_ 92 Lbs. (42 Kg.)  
 WEIGHT w/WATER \_\_\_\_\_ 675 Lbs. (306 Kg.)  
 GAL. TO OVERFLOW \_\_\_\_\_ 70 Gal. (265 L.)  
 WHIRLPOOL MIN. OPERATING VOL. \_\_\_\_\_ 39 Gal. (148 L.)  
 BATHING WELL AT SUMP \_\_\_\_\_ 42 x 22 In. (1067 x 559mm)  
 BATHING WELL AT RIM \_\_\_\_\_ 53 x 25-1/2 In. (1346 x 648mm)  
 WATER DEPTH TO OVERFLOW \_\_\_\_\_ 17-1/2 (445mm)  
 FLOOR LOADING \_\_\_\_\_ 51 Lbs./Sq.Ft. (247 Kgs./Sq.m)  
 (PROJECTED AREA)

**WHIRLPOOL ELECTRICAL SPECIFICATIONS**

PUMP \_\_\_\_\_ 1.25 HP, 9.7 AMPS, 120V.

**GENERAL SPECIFICATIONS FOR 2425V BATHING POOL**

INSTALLED SIZE \_\_\_\_\_ 60 x 32 x 20-1/2 (1524 x 813 x 521mm)  
 WEIGHT \_\_\_\_\_ 77 Lbs. (35 Kg.)  
 WEIGHT w/WATER \_\_\_\_\_ 661 Lbs. (299 Kg.)  
 GAL. TO OVERFLOW \_\_\_\_\_ 70 Gal. (265 L.)  
 BATHING WELL AT SUMP \_\_\_\_\_ 42 x 22 In. (1067 x 559mm)  
 BATHING WELL AT RIM \_\_\_\_\_ 53 x 25-1/2 In. (1346 x 648mm)  
 WATER DEPTH TO OVERFLOW \_\_\_\_\_ 17-1/2 (445mm)  
 FLOOR LOADING \_\_\_\_\_ 50 Lbs./Sq.Ft. (242 Kgs./Sq.m)  
 (PROJECTED AREA)

**NOTES:**

BATH CAN BE INSTALLED EITHER ABOVE OR BELOW FLOOR LINE AS PIER, ISLAND, OR PENINSULA TYPE INSTALLATION. SUPPORT OF BATH BY SUMP BEDDING. SUPPORT AND ENCLOSING MATERIAL BY OTHERS.

■ REFER TO INSTALLATION INSTRUCTIONS SUPPLIED WITH WHIRLPOOL FOR ADDITIONAL INFORMATION.

FITTINGS NOT INCLUDED AND MUST BE ORDERED SEPARATELY.

PROVIDE SUITABLE REINFORCEMENT FOR ALL SUPPORTS.

**IMPORTANT:** Dimensions of fixtures are nominal and may vary within the range of tolerances established by ANSI Standard Z124.1. These measurements are subject to change or cancellation. No responsibility is assumed for use of superseded or voided leaflet.