

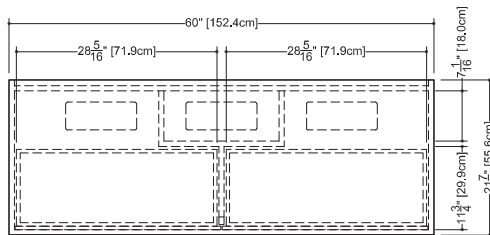
M Collection
Wall-mount vanity
10" height



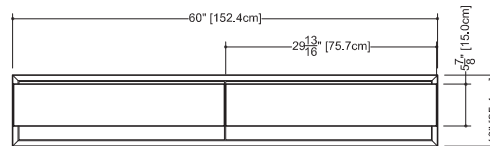
Furniture

Wall-mount vanity M 6010 WM – 2 drawers – 60" length

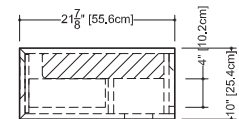
21 7/8" depth x 60" length x 10" height – 556 x 1524 x 254 mm



plan view



front view



side view

finishes and colors

oak

natural
white
wenge
light grey
blue steel
sand
hemp
smoked

matte lacquer*

white
light grey
blue steel
sand
hemp

walnut

natural
chocolate

high gloss lacquer**

white

- 45 degree bevel cuts precluding the need for drawer hardware

- all natural wood veneer on dimensionally stable MDF core

- AWI rated level 5 marine grade finish for moisture resistance and durability (industry's highest finishing class)

- finished vanity interiors in addition to front and sides finished vanity interiors in addition to front and sides

- solid maple dovetailed drawer

- divider for storage

- slow closing ball bearing glides

- special wall preparation recommendations

The distance between studs should not exceed 16". Each stud should be reinforced vertically by 2" x 3" wooden studs and horizontally with 2" x 6" wooden studs at a height of 30" all along the width of the vanity.

*ATTENTION: Vessel sink not recommended with this finish

**ATTENTION: High-Gloss finish on sides and drawer facade only. Bottom and interior in white mat. This finish should only be ordered with an integrated countertop (vessel sink not recommended)

WETSTYLE cannot be held responsible for any technical errors and reserves the right to make revisions without notice.

Approximate measurement.
The manufacturer accepts 1/4" (6.35mm) variance.

www.WETSTYLE.CA - Montreal - Canada
Tel. 450.536.9000 - 1 888.536.9001 - Fax. 450.536.0202

