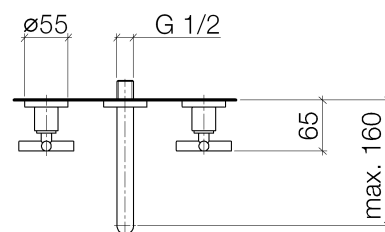
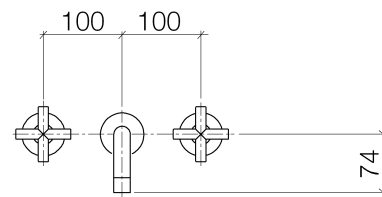




Product specifications

Exposed trim parts only, rough to be ordered separately

- **6 1/4" projection**
- Fixed spout 1/2"
- M 18 x 1 aerator – female thread
- 2x xControl ceramic disc cartridges, stem can be cut to length 1/2"
- Water flow rate limited to max. 1.5 gpm
- low lead compliant
- Flanges \varnothing 2 1/8"
- Faucet extension 1/2", 2"





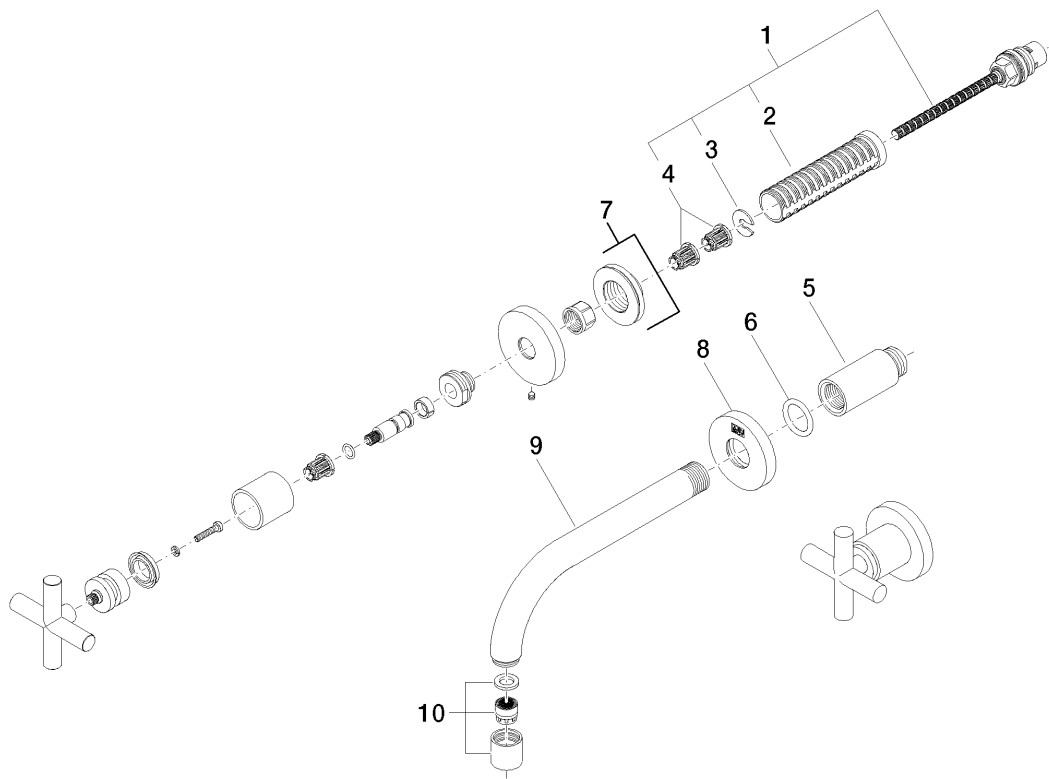
Surfaces

- chrome 36707892-000010
- chrome 36707892-000010
- matt platinum 36707892-060010
- matt platinum 36707892-060010
- platinum 36707892-080010
- platinum 36707892-080010
- matt white 36707892-100010
- matt white 36707892-100010
- matt black 36707892-330010
- matt black 36707892-330010

Accessories required

- Rough, spout in the center; 35707970
- Rough, spout in the center; 35707970
- Rough, flexible positioning; 35712970
- Rough, flexible positioning; 35712970
- Rough, handle on the left, spout on the right; 35713970
- Rough, handle on the left, spout on the right; 35713970
- Rough, handle on the right, spout on the left ; 35714970
- Rough, handle on the right, spout on the left ; 35714970

Exploded assembly drawing



Order quantity

No.	Article number	Name	Installation quantity
1	0490031570090	top	2
2	09184007790	sleeve	2
3	09160102690	ring	2
4	09121200290	fixing cap	4
5	0924030811090	extension	1
6	09141002690	seal	1
7	36310892ff	connection	2
8	092722503ff	rosette	1
9	04282208910ff	spout	1
10	90230101901ff	aerator	1

