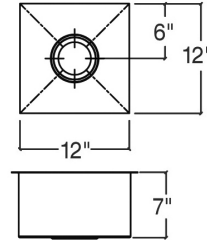


003923 | **J7®**

Project name: _____

Specifier: _____ Contractor: _____



Features

- Handcrafted in Canada using recycled American stainless steel
- Commercial grade - 16 ga material thickness
- Corrosion resistant 304 series stainless steel (18/10)
- Elegant no. 4 brushed finish (appliance finish)
- Highly efficient sound deadening pads
- Practical flat sink bottom and straight bowl sides
- Stylish and functional bowl bottom grooves
- Center 2" or 3-1/2" drain placement
- Limited lifetime warranty

Standards compliance

- ASME A112.19.3
- CSA B45.0
- CSA B45.4

Optional accessories

- Drain fitting 100085
- Drain fitting 100086
- Grid 200324

Sink dimensions

Model	Overall	Bowl	Depth	Cabinet Size*	Drain
003923	13" x 13 1/2"	12" x 12"	7"	18"	2"
003917	13" x 13 1/2"	12" x 12"	7"	18"	3 1/2"

* Cabinet Size is the Recommended Cabinet Size

Product specifications

Sink type to be undermount single bowl. Sink to be handcrafted from a single sheet of 16 ga stainless steel having 18/10 chrome/nickel content and a no.4 brushed finish. Sink to feature bowl bottom grooves, rear 2" drain placement and sound deadening pads. Sink overall dimensions to be 13" left-to-right and 13 1/2" front-to-back. Bowl dimensions to be 12" left-to-right and 12" front-to-back. Sink to feature 7mm radius corners. Sink to be Julien J7® collection model 003923 with bowl depth of 7".

Warranty

Julien inc. offers a LIMITED LIFETIME WARRANTY on the fix components of its stainless steel sinks against defects of material and workmanship. For further details on our product warranty, please refer to our catalog or Web site.