

# Elara 6042 Salon Spa Combination



Product Codes beginning with: ELA6042CRL

Also applies to products sold under part numbers: JV50, JV55, JV60, JV65, JV70, JV75, JV80, JV85

## TECHNICAL SPECIFICATIONS

	English	Metric
Outer Dimensions	60" L x 42" W x 26" H	1524 mm L x 1067 mm W x 660 mm H
Interior Dimensions (bottom of bath) L x W (Mid) x W (End)	36 1/2" L x 26 1/2" W x 26 1/2" W	927 mm L x 673 mm W x 673 mm W
Drain/Equipment Configuration	Right hand drain/Left end pump & blower	Right hand drain/Left end pump & blower
Bath Weight (empty)	155 lbs	70.3 kg
Total Weight/Floor Loading	1,188 lbs 67.9 lbs/ft <sup>2</sup>	539 kg 331.4 kg/m <sup>2</sup>
Operating Gallonage (min-max)	83 (min) 94 (max) U.S. Gals	314.2 (min) 356 (max) L
Electrical Specifications	<b>Each component requires a separate, dedicated GCFI protected circuit(s)</b>	
Motor/Pump & Heater	240V 20A 120HZ	
Blower	120V 15A 60HZ	

## FEATURES, UPGRADES & ACCESSORIES

**Material Type:** High-Gloss Acrylic

**Install Type:** Drop-in or Undermount

**Available Colors:** White (W), Almond (A), Oyster (Y), Black (B)

**Cut-out:** 58" x 40" or Undermount Template DQ50000

**Standard (Included) Features:**

16 jets, In-line Heater, Chromatherapy lighting, 900w blower, bottom air channels

**Available Control Systems:**

J4 Luxury Control Panel (standard)

J5 Luxury LCD Control Panel

**Available Upgrades:**

Whisper Quiet Technology,

Illumatherapy Lighting

**Available Accessories:**

DA34 Rotary Drain Kit PVC (specify metal finish)

HP55 Rotary Drain Kit (specify metal finish)

D095 TheraPro Jet Trim Kit (specify metal finish)

G864 Hand Rails (specify metal finish)

827: Chrome, 826: Brushed Nickel, 845: Oil Rubbed Bronze

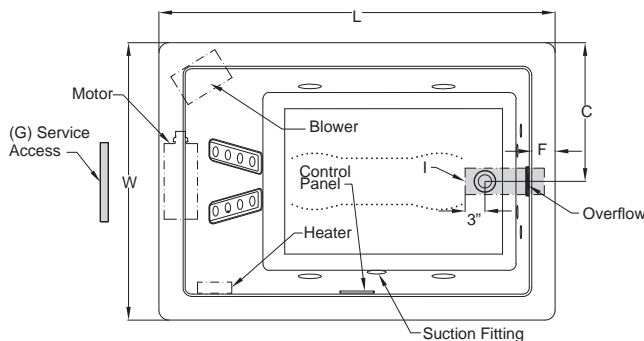
\*Note: D095 (Chrome) is standard on Illumatherapy jets.

EK91 21" Straight Pillow (specify color) 959: White, 958: Almond,

969: Oyster

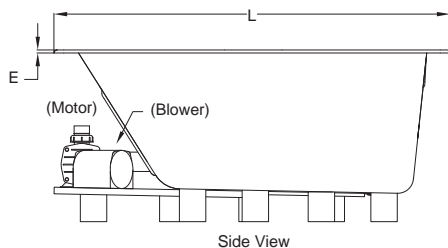
GQ88 Light Chromatherapy Add-on Kit

## KEY DIMENSIONS

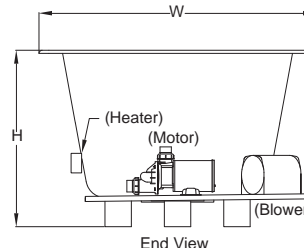


\*Deck width reflects only area indicated on detail.

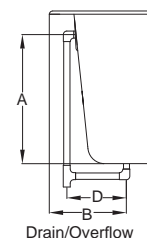
Letter	Description	English	Metric
L	Outer Length	60"	1524 mm
W	Outer Width	42"	1067 mm
H	Overall Height	26"	660 mm
A	Overflow Height	18 1/2"	470 mm
B	Long Edge to Drain Center	10 5/8"	269 mm
C	Short Edge to Drain Center	21"	533 mm
D	Drain Shoe Length	6"	152 mm
E	Deck Height	1/2"	13 mm
F	Deck Width*	4 1/4"	107 mm
G	Service Access Dimensions	12" H x 18" L	305 mm x 457 mm
I	Floor Cut-out for Drain	12" x 4"	305 mm x 102 mm



Side View



End View



Drain/Overflow

NOTE: Graphics May Not be to Scale

© 2010 Jacuzzi Luxury Bath • For additional information call Customer Service 800-288-4002 • [www.jacuzzi.com/technicalspecs](http://www.jacuzzi.com/technicalspecs)

Refer to installation instructions included with fixture before beginning installation. Please confirm product availability and specifications before commencing with any installation work.

PRODUCT SPECIFICATIONS AND AVAILABILITY ARE SUBJECT TO CHANGE WITHOUT NOTICE.

HC99000 REL 03/10