

Date:

Client:

Project:

VOLA product: 4921



**4921**

Build-in basin mixer with on-off sensor for 'hands free' operation.

Sensor aligned with wall.

Valve box VR2618 included.

4921UP = Mixer 4900, sensor cable VR509.

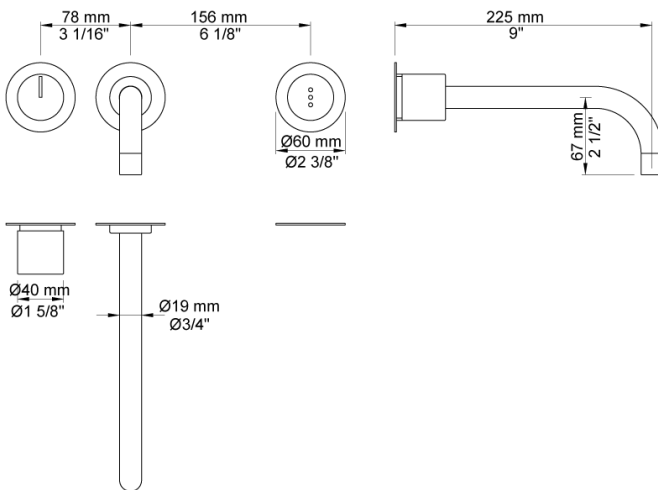
4921AP = Handle NR41, sensor VR510, 225 mm spout 020, 60 mm circular flange 001, 3001, VR512.

**Flow**

	<b>Psi:</b>	<b>14,5</b>	<b>29,0</b>	<b>43,5</b>	<b>58,0</b>	<b>72,5</b>
4921	(gal/min)	1,3	1,3	1,3	1,3	1,3

**Available in colours**

- Color 02, Grey
- Color 04, Light blue
- Color 05, Orange
- Color 06, Light green
- Color 08, Yellow
- Color 09, Dark grey
- Color 12, Mocca
- Color 14, Bright red
- Color 15, Dark blue
- Color 16, Polished chrome
- Color 17, Gloss black
- Color 18, White
- Color 19, Natural brass
- Color 20, Brushed chrome
- Color 21, Carmine red
- Color 25, Pink
- Color 27, Matt black
- Color 40, Brushed stainless steel

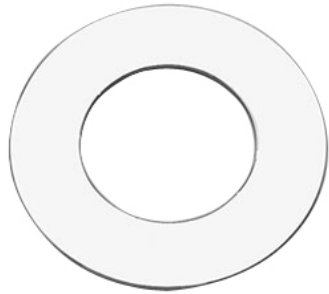


Date:

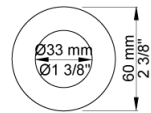
Client:

Project:

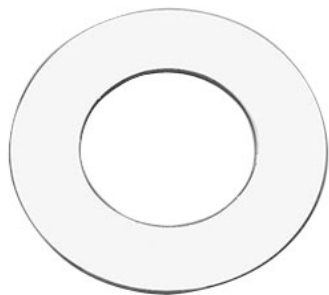
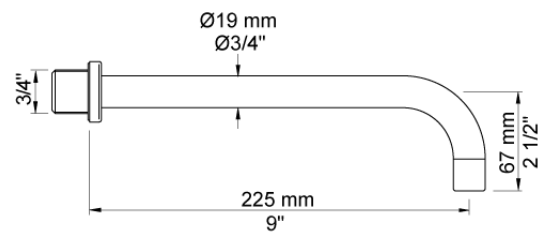
VOLA product: 4921



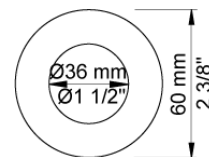
**001**  
60 mm circular flange.  
Hole Ø33 mm.



**020**  
225 mm fixed spout with water saving aerator.



**3001**  
60 mm circular flange. Hole Ø36 mm.



Date:

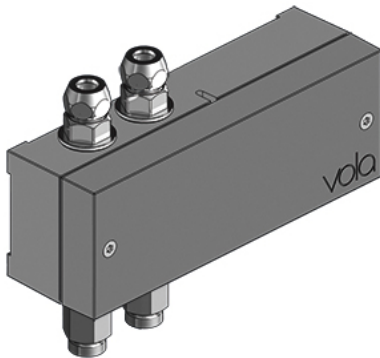
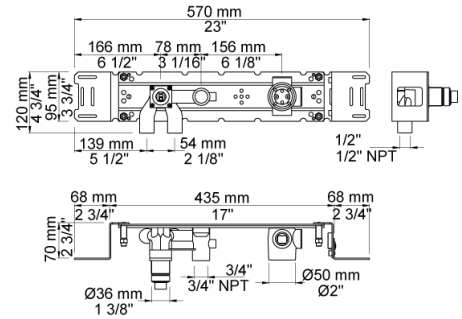
Client:

Project:

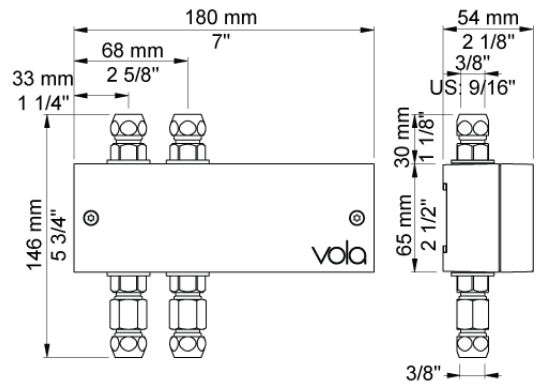
VOLA product: 4921



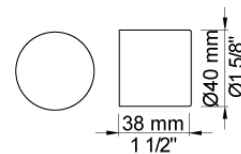
**4900**  
Build-in basin mixer with on-off sensor for 'hands free' operation, with temperature regulation.  
Valve box for electronic mixer, VR2618 enclosed.



**VR2618**  
Valve box for electronic HV1E/4100/4900



**NR41**  
Temperature control handle for wall-mounted electronic mixer 4100.



Date:

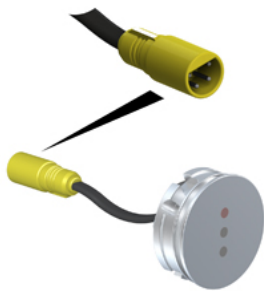
Client:

Project:

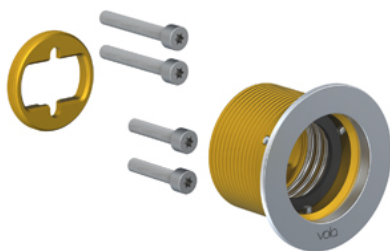
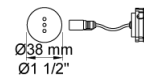
VOLA product: 4921



**VR509**



**VR510**  
Sensor for electronic mixer 4300, 4800 and 4900.



**VR512**  
[no product text]

