

**2G TOGGLE / LINEAR
/ WITHOUT LOGO**

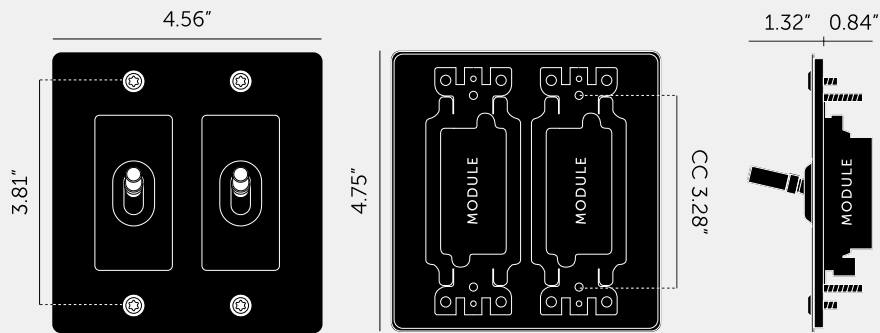
ACTION: TOGGLE SWITCH

KNURL: LINEAR

RANGE: TOGGLE SWITCHES

A solid metal toggle switch with our new linear knurled toggle arm to feel amazing with every touch. The switch is finished with a flat plate and our signature solid metal coin/torx screws. Available in five different finishes. You can also team them up with our dimmers, duplex and USB outlets in matching finishes.





SPECIFICATIONS

Our Metal Electricity range has solid stainless steel plates, in our signature white, steel, brass, smoked bronze and black finishes.

Module: NTM-01384 (US-TO-MO-A)

Style: On/Off Toggle switch

120-277V AC / 15 A / 60 HZ

3-way switching (can be controlled from 2 locations)

Certification: cETLus 5005703

Recommended Electrical Back Box: Standard 1G electrical box. Box must be flush mounted.

This piece features a 1/8" (4mm) shadow gap when installed.

FINISH & SKU NUMBERS

sku:	finish:	size:
NTG-024046	● black	2G
NTG-054047	● brass	2G
NTG-454048	● smoked bronze	2G
NTG-074049	● steel	2G
NTG-144050	● white	2G

INCLUDED

1 x 2G Wall Plate
 2 x Toggle Module
 2 x Toggle Detail Kits

PLEASE NOTE

DISCLAIMER: Always consult a trade professional when installing this product. Buster + Punch is not responsible for the usage or feasibility of installation requirements. This product is not suitable for damp or wet environments.

CARE INSTRUCTIONS

Wipe with a dry lint free cloth with no loose hairs, avoid using any chemicals. Please note that finishes may age naturally with time and regular use.