

**Features**

- 25+ artisan finishes including 10+ PVD finishes
- All brass construction
- Single handle allows for volume and temperature control at any position
- 1.2gpm (4.5 L/min) max flow rate
- Rough valve (SHV-R) sold separately

**TO-V6001-7**  
**TO-V6001-7-XX**  
**TO-V6001-9**  
**TO-V6001-9-XX**



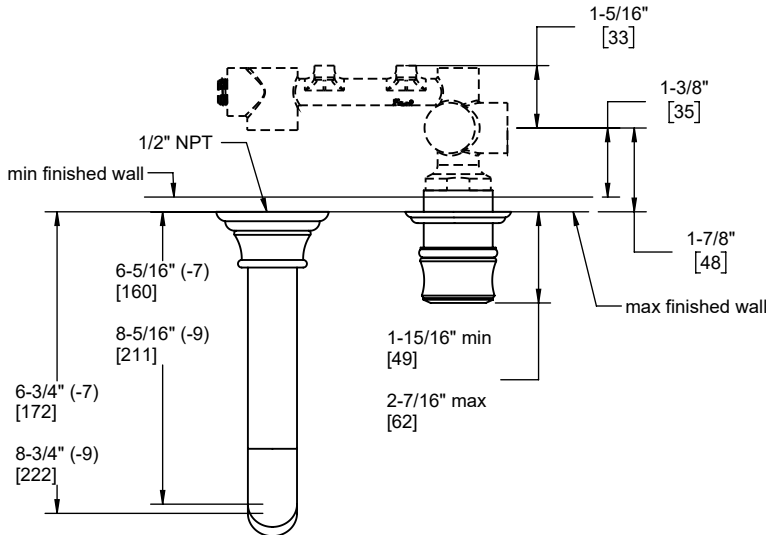
**Codes/Standards Applicable**

Product meets or exceeds the following:

- ASME A112.18.1/CSA B125.1
- NSF 61, NSF 372, CEC & DOE
- EPA WaterSense
- Commonwealth of MA
- ADA compliant



TO-V6001-7-SN shown



Through-Hole Specifications			
	Min	Recommended	Max
Spout:	Ø 1" [25]	Ø 1-1/4" [32]	Ø 1-3/8" [35]
Handle	Ø 1-5/8" [41]	Ø 1-3/4" [44]	Ø 2" [51]

-XX	Insert Style
ADC	Black Powdercoat
RD	Red Powdercoat
WP	White Porcelain
PP	Pink Porcelain
OP	Orange Porcelain
YP	Yellow Porcelain
BP	Blue Porcelain

