

## Urban 100

### Features

- Bathroom Sink
- Made of Ceramic
- Ceramic White Finish
- With Overflow and Concealed (Hidden) Drain Assembly
- Wall Mount or Countertop (Vessel) Installation
- Available with One, Two, or No Faucet Hole
- Made in Italy



### Related Items:

- PIL 027 | Concealed Drain
- WSBC 53922 | Decorative Trap

### Finishes:




### SKU# | Options:

- Urban 100.00 | No Faucet Hole
- Urban 100.01 | Single Faucet Hole
- Urban 100.02 | Two Faucet Holes
- Available in Glossy Black (Special Order)

### Codes & Standards:

- ADA Compliant

\* WS Bath Collections reserve the right to make revisions without notice to product specifications, dimensions, or information.

<b>Collection  </b> Urban	<b>Model  </b> Urban 100	<b>Dimensions Metric</b> <i>1 inch = 2.54 cm</i> <i>1 inch = 25.4 mm</i>	 1051 Lea Drive - Collegeville, PA 19426 Tel. 215 513 9400 - Fax 610 831 0215 <a href="http://www.ws bathcollections.com">www.ws bathcollections.com</a> - <a href="mailto:info@ws bathcollections.com">info@ws bathcollections.com</a>
------------------------------	-----------------------------	--	---

collezione  
collection

## Urban 100

cod.URL02

Lavabo

wash basin

Dimensioni / dimensions

L 1005 - P 450 - H 80

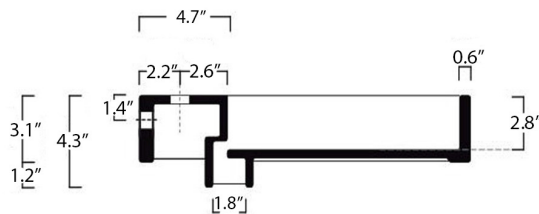
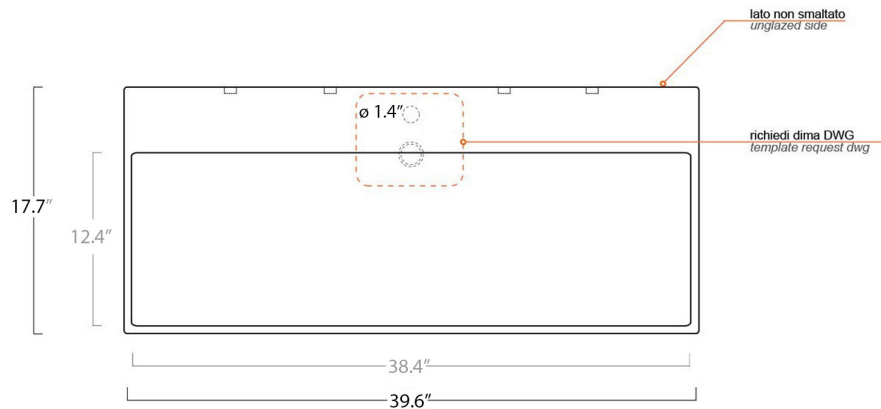
Troppo pieno / over flow : No/ Yes CL

Peso netto / net weight :45 LBS

Appoggio / sit-on

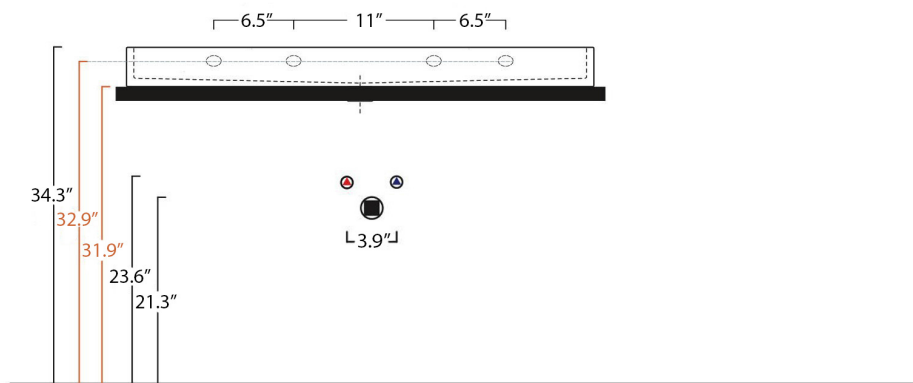
Sospeso / wall-hung

### Urban 100



Piletta ad espansione  
Hyde drain waste

PIL 027



Collection  
Urban

Model |  
Urban 100

Dimensions Metric

1 inch = 2.54 cm  
1 inch = 25.4 mm

**WS**<sup>®</sup>  
BATH  
COLLECTIONS

1051 Lea Drive - Collegeville, PA 19426  
Tel. 215 513 9400 - Fax 610 831 0215

[www.ws bathcollections.com](http://www.ws bathcollections.com) - [info@ws bathcollections.com](mailto:info@ws bathcollections.com)

We recommend the following items that work with your sink.

Urban 100

## TRAPS



WSBC 53922  
*Our best seller*

Polished Chrome  
WSBC 53922.29

Matte Black  
WSBC 53922.22



WSBC 5392

Polished Chrome  
WSBC 5392.29



WSBC 53925

Polished Chrome  
WSBC 53925.29



WSBC 53921  
*Space saving*

Polished Chrome  
WSBC 53921.29

Matte Black  
WSBC 53921.22

## DRAINS



PIL 027  
Concealed drain

## MOUNTING HARDWARE

### Wall-mount installation

### Vessel/ countertop installation



Bolts



Silicone (optional)

Collection  
Urban

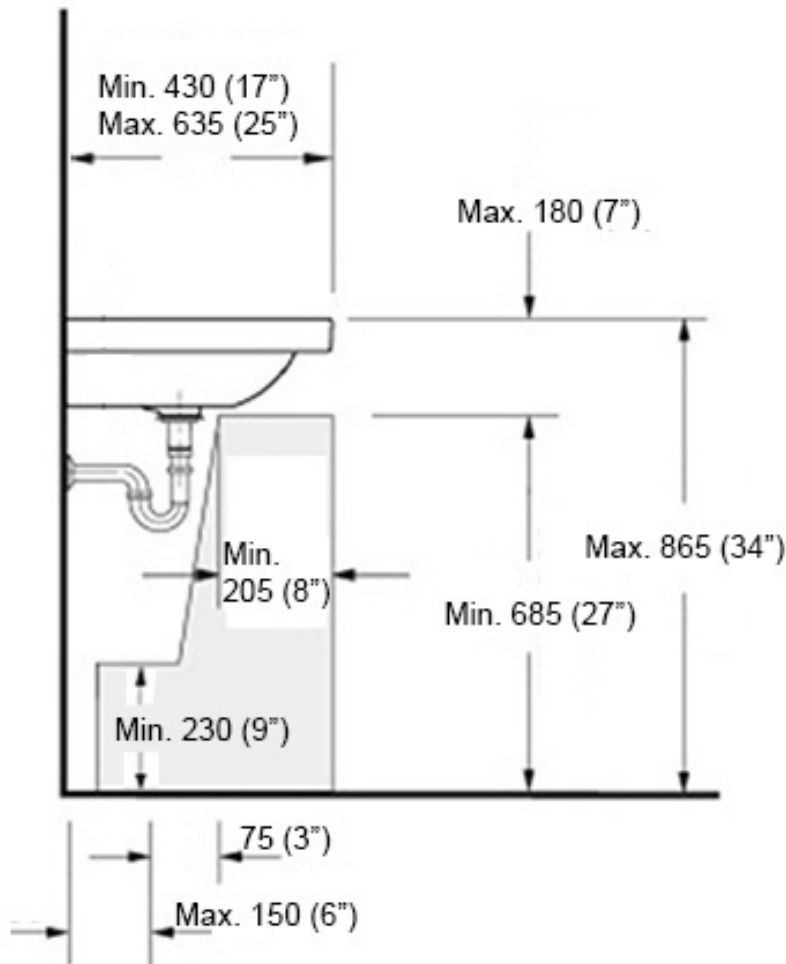
Model |  
Urban 100

Dimensions Metric  
*1 inch = 2.54 cm*  
*1 inch = 25.4 mm*

**WS**<sup>®</sup>  
**BATH**  
**COLLECTIONS**

1051 Lea Drive - Collegeville, PA 19426  
Tel. 215 513 9400 - Fax 610 831 0215  
[www.ws bathcollections.com](http://www.ws bathcollections.com) - [info@ws bathcollections.com](mailto:info@ws bathcollections.com)

**Recommended ADA Installation**



Note: ADA Compliant when installed in accordance with ADA guidelines

<p><b>Collection</b> Recommended ADA Installation</p>	<p><b>Model  </b> ADA Bathroom Sinks</p>	<p>Dimensions Metric <i>1 inch = 2.54 cm</i> <i>1 inch = 25.4 mm</i></p>	<p><b>WS<sup>®</sup></b> <b>BATH</b> <b>COLLECTIONS</b> 1051 Lea Drive - Collegeville, PA 19426 Tel. 215 513 9400 - Fax 610 831 0215 <a href="http://www.ws bathcollections.com">www.ws bathcollections.com</a> - <a href="mailto:info@ws bathcollections.com">info@ws bathcollections.com</a></p>
---	--	--	--