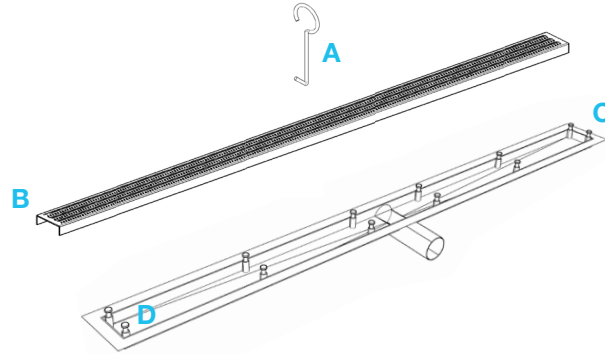


DELMAR LINEAR DRAIN STANDARD LENGTH WITH SIDE OUTLET FLANGE EDGE

Kit Includes:

- A** Lifting Key
- B** Grate
- C** Flange Edge Base
- D** Leveling Legs

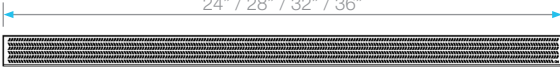


Specifications

B Grate - Top View

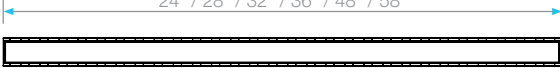
Nami - Kai

24" / 28" / 32" / 36"



Mist

24" / 28" / 32" / 36" / 48" / 58"



Delta - Wedgewire - Lotus

24" / 28" / 32" / 36" / 48" / 58"



Side View

Nami - Kai - Delta - Lotus - Wedgewire

3.15"



Mist (Tile-in)

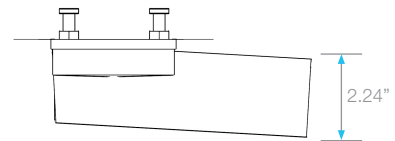
2.55"



*Note: Tile-In grate accepts flooring material up to 1" thickness

C Base - Side View

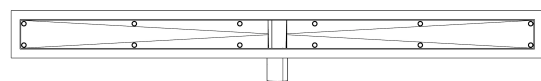
1" 3.35" 1"



Top View

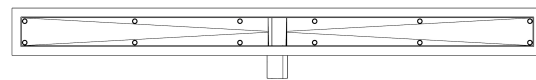
Nami - Kai

24" / 28" / 32" / 36"



Delta - Mist - Wedgewire - Lotus

24" / 28" / 32" / 36" / 48" / 58"




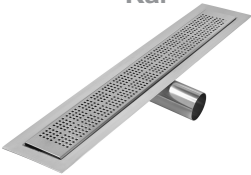




Side View



Features

- Stainless Steel 316 Gauges:
 - Wedgewire grate: 8 gauges = 5mm for edge bars and 9 gauges = 4mm for inside bars.
 - All other grates: 16 gauge = 1.5 mm.
 - Base: 18 gauge = 1.2 mm
- Grate can be removed completely for cleaning.
- Side Outlet Flange Edge Base is intended for use with modern waterproofing method

Complete Kit

		Satin		Polished		Black		
	Length	SKU	SKU	SKU	SKU	SKU	SKU	
 Wedgewire	24"	33.700.24FSO ST	33.700.24FSO PS	33.700.24FSO BK				
	28"	33.700.28FSO ST	33.700.28FSO PS	33.700.28FSO BK				
	32"	33.700.32FSO ST	33.700.32FSO PS	33.700.32FSO BK				
	36"	33.700.36FSO ST	33.700.36FSO PS	33.700.36FSO BK				
	48"	33.700.48FSO ST	33.700.48FSO PS	33.700.48FSO BK				
	58"	33.700.58FSO ST	33.700.58FSO PS	33.700.58FSO BK				
 Kai		Satin				Satin		
		Length	SKU	SKU	SKU	SKU	SKU	
	24"	33.200.24FSO ST			24"	33.500.24FSO ST		
	28"	33.200.28FSO ST			28"	33.500.28FSO ST		
	32"	33.200.32FSO ST			32"	33.500.32FSO ST		
 Mist (Tile-in)	36"	33.200.36FSO ST			36"	33.500.36FSO ST		
	48"	33.200.48FSO ST			48"	33.500.48FSO ST		
	58"	33.200.58FSO ST			58"	33.500.58FSO ST		
	 Delta		Satin		Polished		Satin	
			Length	SKU	SKU	SKU	SKU	SKU
24"		33.300.24FSO ST	33.300.24FSO PS		24"	33.100.24FSO ST		
28"		33.300.28FSO ST	33.300.28FSO PS		28"	33.100.28FSO ST		
32"		33.300.32FSO ST	33.300.32FSO PS		32"	33.100.32FSO ST		
36"		33.300.36FSO ST	33.300.36FSO PS		36"	33.100.36FSO ST		
 Nami	48"	33.300.48FSO ST	33.300.48FSO PS					
	58"	33.300.58FSO ST	33.300.58FSO PS					
	 Lotus		Bronze		Black		Gold	
			Length	SKU	SKU	SKU	SKU	SKU
		24"	33.400.28FSO BZ	33.400.24FSO BK	33.400.24FSO GD			
		28"	33.400.28FSO BZ	33.400.28FSO BK	33.400.28FSO GD			
32"		33.400.32FSO BZ	33.400.32FSO BK	33.400.32FSO GD				
36"	33.400.36FSO BZ	33.400.36FSO BK	33.400.36FSO GD					
48"	33.400.48FSO BZ	33.400.48FSO BK	33.400.48FSO GD					
58"	33.400.58FSO BZ	33.400.58FSO BK	33.400.58FSO GD					

Note: Installer must verify all rough-in dimensions prior to installation and consult local and national codes. Conformity and compliance to local and national codes are the responsibility of the installer. Dimensions are subject to Manufacturers tolerance and change without notice. We can assume no responsibility for use of superseded or voided data.