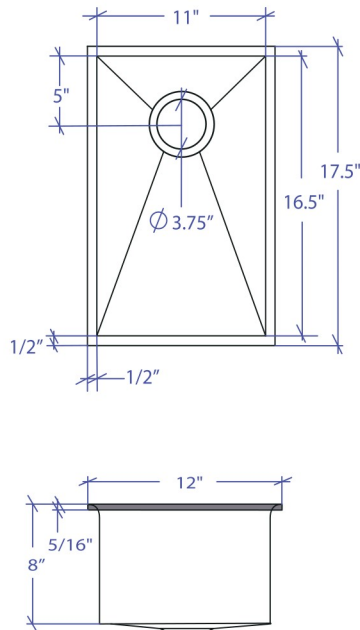


# CRESCENT MCFS-651GDSB



\*Flush-Mount Installation Kit is included with each sink  
\*Custom ADA compliant versions are available



## • FEATURES

- 16-gauge type 304 stainless steel
- Stainless steel rim support tubing
- 1/4" round rim and basin design

## • TECHNICAL INFORMATION

- External dimension: 12"Lx17.5"Wx8"D
- Basin dimensions: 11"Lx16.5"Wx8"D
- Rim width: 1/2"
- Rim thickness: 5/16"

## • FINISHES

- Gold PVD satin brushed stainless steel

## • INSTALLATION OPTIONS

- Flush-mount

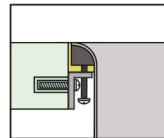
## • MINIMUM CABINET SIZE (I.D.)

- Flush-mount 15"

## • INDUSTRY'S ONLY STAINLESS STEEL SINK DESIGNED SPECIFICALLY TO BE FLUSH-MOUNTED

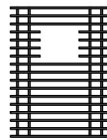
## • INTERNATIONAL PATENT PENDING

## • FLUSH-MOUNT INSTALLATION

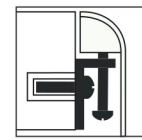


Flush-mount

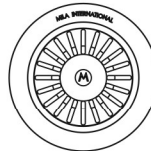
## • ACCESSORIES OPTIONS



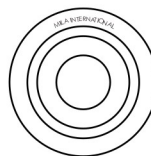
MBG-6515GDSB  
Basin Grid



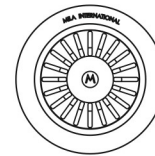
Flush Mount Kit  
(Included)  
MTK-61 4AL



MKD-101GDSB  
Strainer



MDC-101GDSB  
Disposal Collar



MDC-102GDSB  
Disposal Collar

## PROJECT INFORMATION

Project			
Date	/	/	QTY
Specifier			
Contact			
Note			