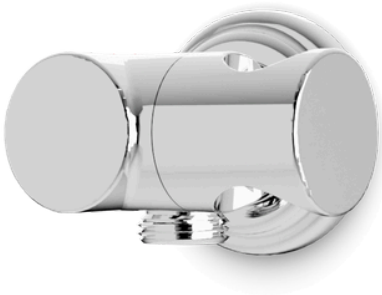


F902-47CL

Classic Shower Outlet Elbow with Pivoting Hand Shower Holder

artos®

OPERATING SPECIFICATIONS



OPERATING TEMPERATURE

Maximum: 176°

OPERATING PRESSURE

Minimum: 20psi

Maximum: 125psi

Recommended: 30psi-90psi

Above 90psi, it may be necessary to install a pressure reducer

INLET/OUTLET CONNECTIONS

1/2" Female NPT Inlet

1/2" Male NPT Outlet

MATERIAL

Solid Brass

REQUIREMENTS

Control Valve

Interlock hose (F902-8)

Handshower

STANDARDS

To view all standards, please visit product approvals in our learning hub at artos.us.com

All technical specifications, product details, and pricing are subject to change without prior notice. Artos makes every effort to ensure accuracy; however, errors or omissions may occur. It is the responsibility of the installer, designer, or purchaser to verify all critical dimensions, installation requirements, and compliance with applicable codes prior to use.

Artos assumes no liability for damages, losses, or injuries resulting from the use of this documentation or from product installation, operation, or maintenance performed outside of Artos instructions and applicable codes. Product warranties are limited to those expressly stated by Artos. Please refer to official warranty documentation for complete terms and conditions.

All drawings, manuals, and specifications are the property of Artos and may not be reproduced, distributed, or altered without prior written permission.

F902-47CL

Classic Shower Outlet Elbow with Pivoting Hand Shower Holder

artos®

PRODUCT DIMENSIONS

