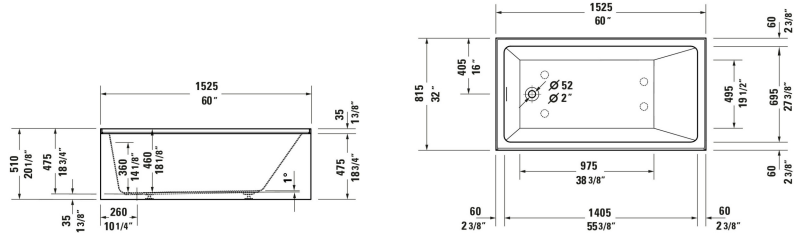


Vero Bathtub # 70065800000090

|< 60 " >|



Bathtub	Dimension	Weight	Order number
Rectangular, Installation Type: Alcove, Integrated acrylic panel front, White, Material: Sanitary acrylic, Number of backrests: 1 Right, Includes support frame, Includes drain and overflow, Overflow: Yes, Drain orientation: Foot end, Overflow position: Foot end, Capacity gal: 68 gal			
<b>Colors</b>			
00 White			
<b>Variant</b>			
cUPC listed: Yes	60 "x18 3/4 "	88.185 lb	70065800000090

All drawings contain the necessary measurements which are subject to standard tolerances. They are stated in inch & mm and are non-binding. Exact measurements, in particular for customized installation scenarios, can only be taken from the finished ceramic piece.