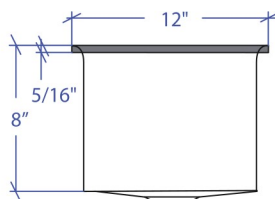
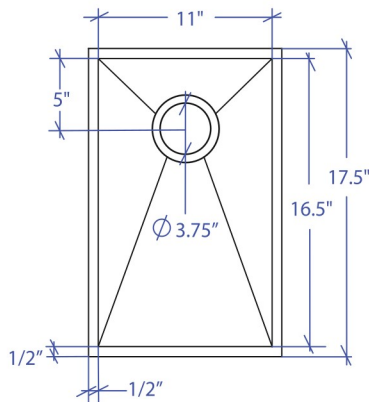


# CRESCENT MCFS-651SB



\*Flush-Mount Installation Kit is included with each sink  
 \*Custom ADA compliant versions are available



## • FEATURES

16-gauge type 304 stainless steel  
 Stainless steel rim support tubing  
 1/4" round rim and basin design

## • TECHNICAL INFORMATION

External dimension: 12"Lx17.5"Wx8"D  
 Basin dimensions: 11"Lx16.5"Wx8"D  
 Rim width: 1/2"  
 Rim thickness: 5/16"

## • FINISHES

Satin brushed stainless steel

## • INSTALLATION OPTIONS

Flush-mount

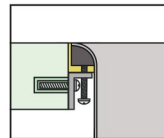
## • MINIMUM CABINET SIZE (I.D.)

Flush-mount 15"

## • INDUSTRY'S ONLY STAINLESS STEEL SINK DESIGNED SPECIFICALLY TO BE FLUSH-MOUNTED

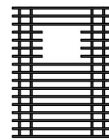
## • INTERNATIONAL PATENT PENDING

## • FLUSH-MOUNT INSTALLATION

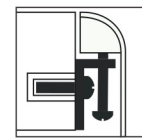


Flush-mount

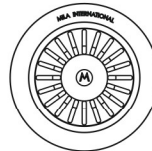
## • ACCESSORIES OPTIONS



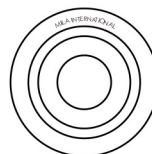
MBG-6515SB  
Basin Grid



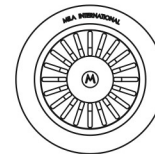
Flush Mount Kit  
(Included)  
MTK-614AL



MKD-101SB  
Strainer



MDC-101SB  
Disposal Collar



MDC-102SB  
Disposal Collar

## PROJECT INFORMATION

Project			
Date	/	/	QTY
Specifier			
Contact			
Note			