

Rain shower ceiling-mounted 11-3/4" - Chrome

SERIES SPECIFIC

28 687 970 Product version from 4/1/2025



- Rain shower diameter 11-3/4"
- Rain shower material: metal
- PURE RAIN, flow rate max. 1.8 gpm (at 3 bar)
- Function from: 1.6 gpm
- with drip prevention
- Descaling system

Technical data:

- Flange diameter 2-3/8"
- 1/2" connection

Notes:

- This product reduces water consumption by 28% (compared to requirements of EPA Act '92)
- This product contributes to meeting the requirements of the LEED® Green Building Rating

	Chrome	28 687 970-00 0010
	Brushed Platinum	28 687 970-06 0010
	Platinum	28 687 970-08 0010
	Dark Chrome	28 687 970-19 0010
	Light Gold (PVD)	28 687 970-26 0010
	Brushed Light Gold (PVD)	28 687 970-27 0010
	Brushed Durabronze (23kt Gold)	28 687 970-28 0010
	Matte Black	28 687 970-33 0010
	Brushed Dark Brass (PVD)	28 687 970-39 0010
	Brushed Bronze (PVD)	28 687 970-42 0010
	Brushed Dark Bronze (PVD)	28 687 970-43 0010
	Brushed Champagne (22kt Gold)	28 687 970-46 0010
	Champagne (22kt Gold)	28 687 970-47 0010
	Brushed Chrome	28 687 970-93 0010
	Brushed Dark Platinum	28 687 970-99 0010

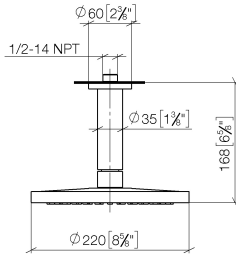
Recommended article



- Concealed wall elbow -** 35 085 970-90
 •Min. rough in depth 3-1/2" 0010
 •Max. rough in depth 6-3/8"

28 687 970 Product version from 4/1/2025

mm [inches]



Codes & Standards

ASME A112.18.1

cUPC

EPA WaterSense

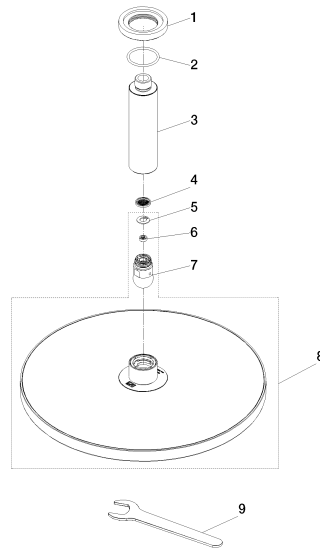
WaterSense



Certificates and sustainability

IAPMO_4976 (

IAPMO_11777



Spare parts list

Number	Item Number	Designation	Number of units	Lead time
1	09 27 22 040-00	Escutcheon Ø 60 x Ø 35 x 9 mm - Chrome	1.00	26
8	90 12 05 110 00-00	Rain shower round Ø 300 mm - Chrome	1.00	26
5	09 16 01 014 90	Ring Retaining ring Ø 15 x 1 mm -	1.00	14
9	90 30 09 069 00 90	assembly wrench -	1.00	14
4	09 23 01 039 90	Sieve seal Ø 19 x 5,5 mm -	1.00	14
2	09 14 10 141 90	O-Ring NBR 70 34,59 x 2,62 mm -	1.00	14
7	04 18 40 276 00 90	Tube aerator without flow limiter Ø 14 x 37,5 mm, without limitation -	1.00	14
6	09 23 01 102 90	Flow limiter Ø 9,6 x 4,6 mm, 1.75 gpm -	1.00	14
3	09 11 03 080-00	Connection Ø 35 x 135 mm - Chrome	1.00	26